

VORTAC HPW 114.35 Chan 90 (Y)	APP CRS 252°	Rwy Idg TDZE Apt Elev	5002 191 193
--	------------------------	-----------------------------	---

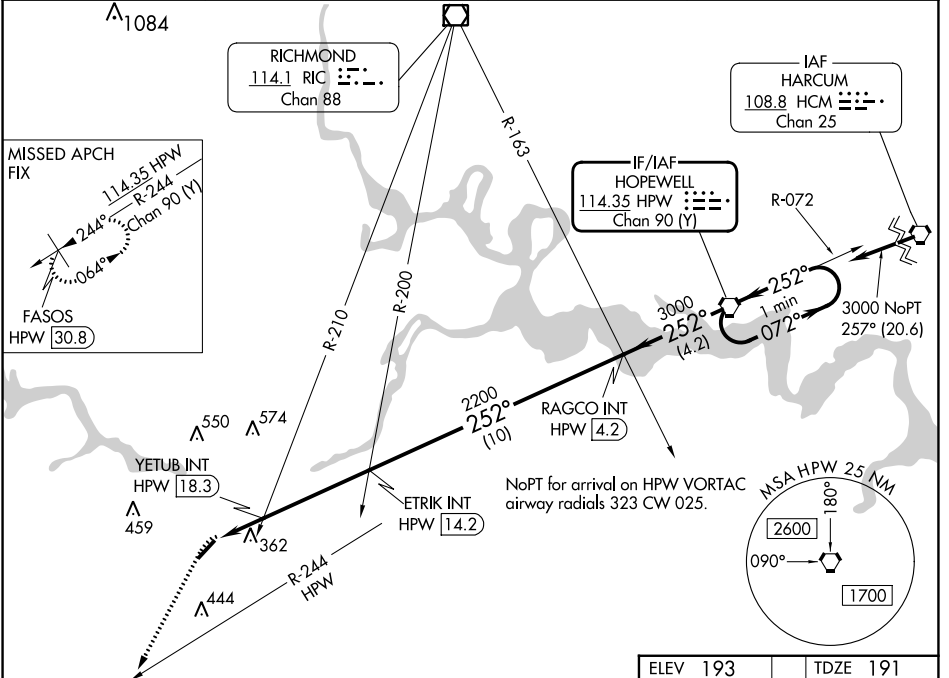
VOR RWY 23

TRI CITIES EXEC/DINWIDDIE COUNTY (P/TB)

⚠ When local altimeter setting not received, use Richmond Exec/Chesterfield County altimeter setting and increase all MDA 40 feet; increase S-23 Cat C and Circling Cat C visibility 1/8 mile and YETUB fix minimums S-23 Cat C visibility 1/8 mile and Circling Cat C visibility 1/4 mile. DME required.

MISSED APPROACH: Climb to 2000 on heading 214° and HPW R-244 to FASOS/HPW 30.8 DME and hold.

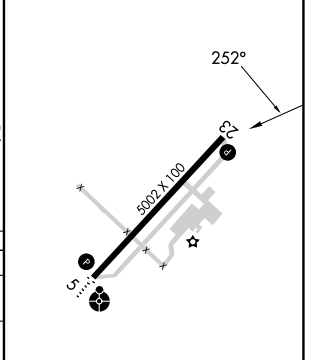
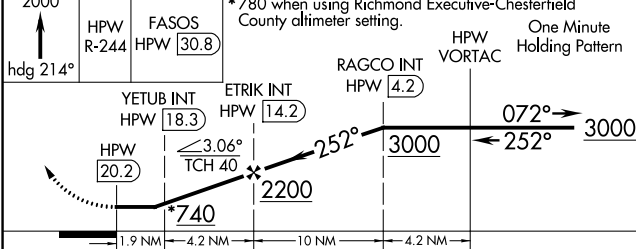
AWOS-3 133.325	POTOMAC APP CON 126.75 307.2	GCO 135.075	UNICOM 122.7 (CTAF) 0
--------------------------	--	-----------------------	--



NE-3, 26 DEC 2024 to 23 JAN 2025

NE-3, 26 DEC 2024 to 23 JAN 2025

ELEV 193	TDZE 191
----------	----------



CATEGORY	A	B	C	D
S-23	740-1	549 (600-1)	740-1 1/8 549 (600-1 1/8)	NA
C CIRCLING	740-1	547 (600-1)	760-1 1/8 567 (600-1 1/8)	NA
YETUB FIX MINIMUMS (DUAL VOR RECEIVERS OR DME REQUIRED)				
S-23	620-1	429 (500-1)	620-1 1/4 429 (500-1 1/4)	NA
C CIRCLING	680-1	487 (500-1)	760-1 1/2 567 (600-1 1/2)	NA

MIRL Rwy 5-23 0					
REIL Rwy 23 0					
FAF to MAP 6.1 NM					
Knots	60	90	120	150	180
Min:Sec	6:06	4:04	3:03	2:26	2:02

VOR RWY 23