

BLUFFTON, OHIO

AL-5665 (FAA)

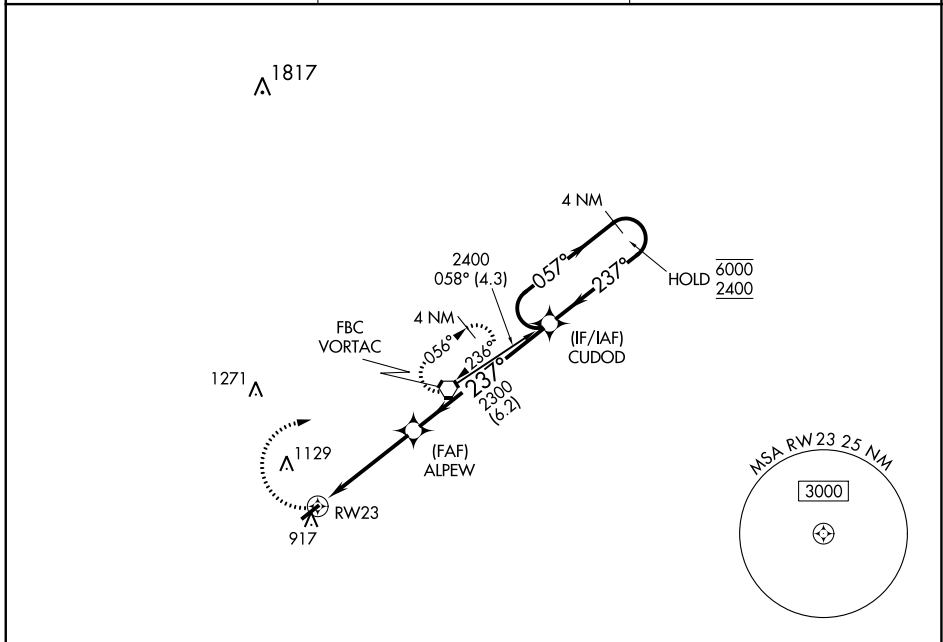
22307

| | |
|------------------------|------------------------|
| APP CRS 237° | Rwy Idg 4126 |
| | TDZE 850 |
| | Apt Elev 851 |

RNAV (GPS) RWY 23

BLUFFTON (5G7)

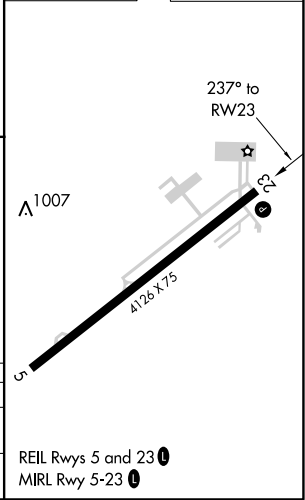
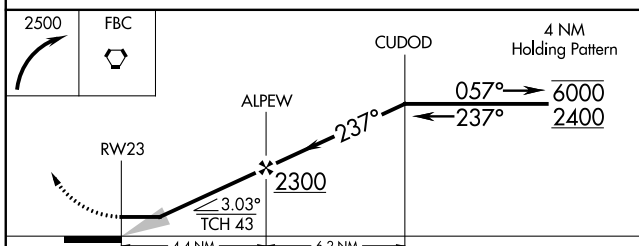
| | | |
|---|---------------------------------------|--|
| RNP APCH. | | MISSED APPROACH: Climbing right turn to 2500 direct FBC VORTAC and hold. |
| <p>▼ Use Findlay altimeter setting; when not received use Lima altimeter setting and increase all MDA 20 feet and Circling Cat D visibility ¼ SM.</p> <p>▲ NA</p> | | |
| FDY ASOS 132.85 | TOLEDO APP CON 120.8 317.55 | UNICOM 122.8 (CTAF) 0 |



EC-2, 26 DEC 2024 to 23 JAN 2025

EC-2, 26 DEC 2024 to 23 JAN 2025

| | |
|----------|----------|
| ELEV 851 | TDZE 850 |
|----------|----------|



| CATEGORY | A | B | C | D |
|----------|-----------------------|-----------------------|-------------------------------|-------------------------------|
| LNVA MDA | 1340-1 | 490 (500-1) | 1340-1 1/8 490 (500-1 3/8) | 1340-1 1/2 490 (500-1 1/2) |
| CIRCLING | 1360-1 509 (600-1) | 1520-1 669 (700-1) | 1520-1 3/4 669 (700-1 3/4) | 1520-2 669 (700-2) |

REIL Rwy 5 and 23 0
MIRL Rwy 5-23 0

BLUFFTON, OHIO
Orig-B 26MAR20

40°53'N-83°52'W

BLUFFTON (5G7) RNAV (GPS) RWY 23