

BLUFFTON, OHIO

AL-5665 (FAA)

22307

|            |         |          |      |
|------------|---------|----------|------|
| VORTAC FBC | APP CRS | Rwy Idg  | 4126 |
| 108.2      | 233°    | TDZE     | 850  |
| Chan 19    |         | Apt Elev | 851  |

# VOR RWY 23

BLUFFTON (5G7)

**▽** Use Findlay altimeter setting; when not received, use Lima altimeter setting and increase all MDA 20 feet, increase S-23 Cat C 1/8 SM and Circling Cat C/D visibility 1/4 SM.

**⚠ NA**

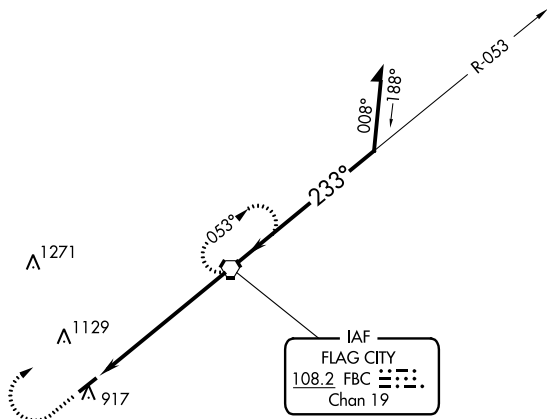
**MISSED APPROACH:** Climb to 2500 then right turn direct FBC VORTAC and hold.

FDY ASOS  
**132.85**

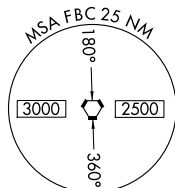
TOLEDO APP CON  
**120.8 317.55**

UNICOM  
**122.8 (CTAF) 0**

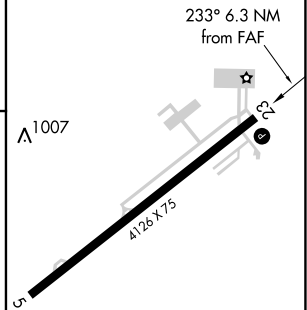
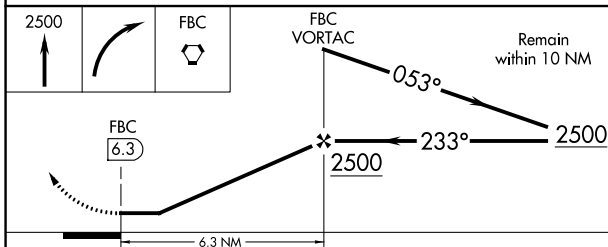
1817 **△**



IAF  
FLAG CITY  
108.2 FBC  
Chan 19



ELEV 851 TDZE 850



| CATEGORY          | A                  | B                  | C                      | D                      |
|-------------------|--------------------|--------------------|------------------------|------------------------|
| S-23              | 1360-1 510 (600-1) |                    | 1360-1 510 (600-1 3/8) | 1360-1 510 (600-1 1/2) |
| <b>C</b> CIRCLING | 1360-1 509 (600-1) | 1520-1 669 (700-1) | 1520-1 669 (700-1 3/4) | 1520-2 669 (700-2)     |

REIL Rwy 5 and 23 **0**  
MIRL Rwy 5-23 **0**

FAF to MAP 6.3 NM

|         |      |      |      |      |      |
|---------|------|------|------|------|------|
| Knots   | 60   | 90   | 120  | 150  | 180  |
| Min:Sec | 6:18 | 4:12 | 3:09 | 2:31 | 2:06 |

BLUFFTON, OHIO  
Amdt 7B 26MAR20

40°53'N-83°52'W

# BLUFFTON (5G7) VOR RWY 23

EC-2, 26 DEC 2024 to 23 JAN 2025

EC-2, 26 DEC 2024 to 23 JAN 2025