

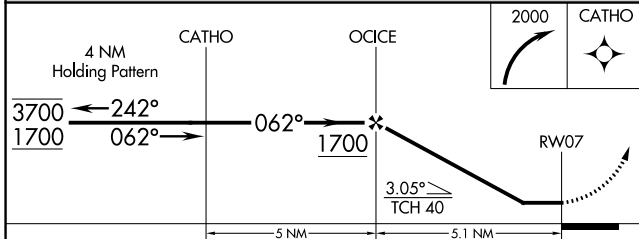
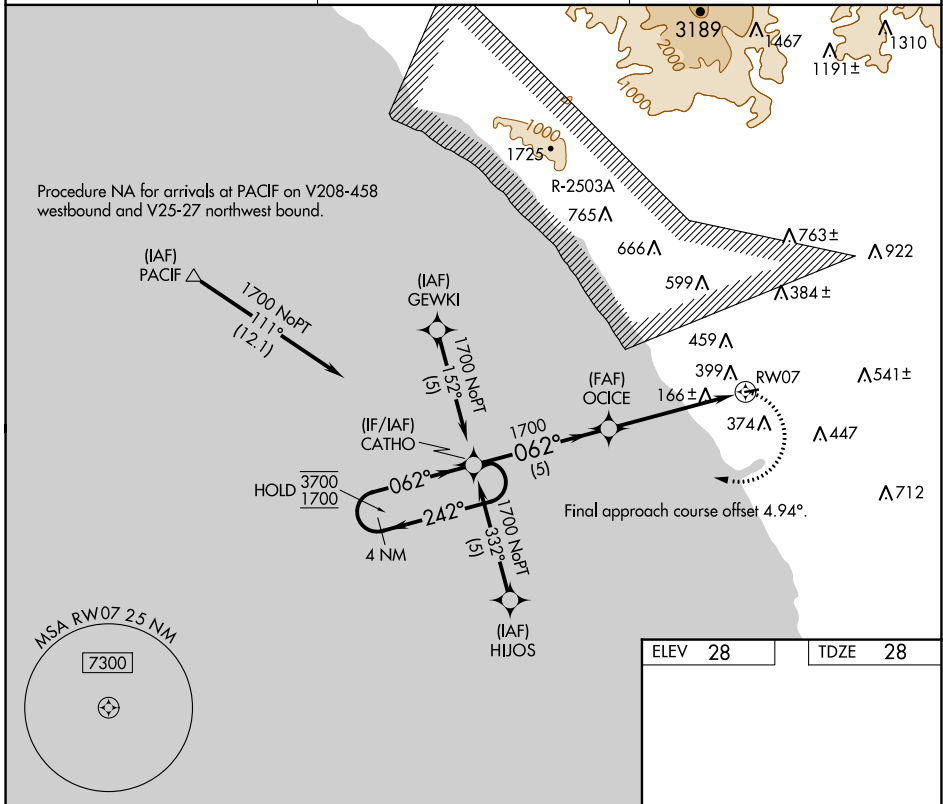
APP CRS	Rwy ldg	2712
062°	TDZE	28
	Apt Elev	28

RNAV (GPS) RWY 7

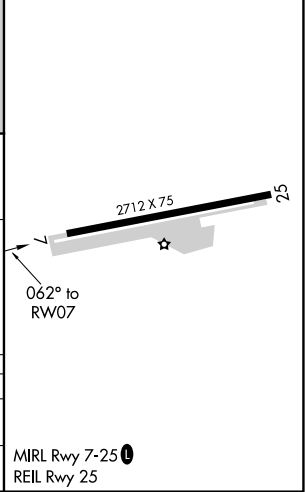
BOB MAXWELL MEML AIRFIELD (OKB)

RNP APCH-GPS.		MISSED APPROACH: Climbing right turn to 2000 direct CATHO and hold.
▼	Rwy 7 helicopter visibility reduction below 1 SM NA.	
▲	Rwy 7 Straight-in and Circling minimums NA at night.	

ASOS	SOCAL APP CON	UNICOM
127.8	127.3 323.0	122.725 (CTAF)



ELEV	28	TDZE	28
------	----	------	----



CATEGORY	A	B	C	D
LNVA MDA	660-1	632 (700-1)		NA
CIRCLING	720-1 692 (700-1)	840-1¼ 812 (900-1¼)		NA

MIRL Rwy 7-25
REIL Rwy 25

SW-3, 26 DEC 2024 to 23 JAN 2025

SW-3, 26 DEC 2024 to 23 JAN 2025