

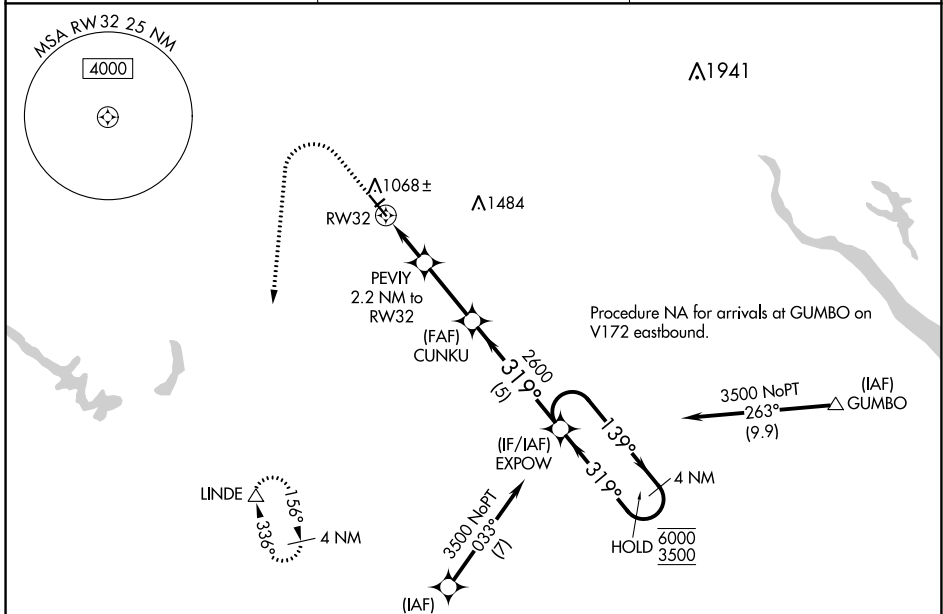
WAAS CH 53345 W32A	APP CRS 319°	Rwy Idg TDZE Apt Elev	5500 1010 1013
--	------------------------	-----------------------------	---

RNAV (GPS) RWY 32

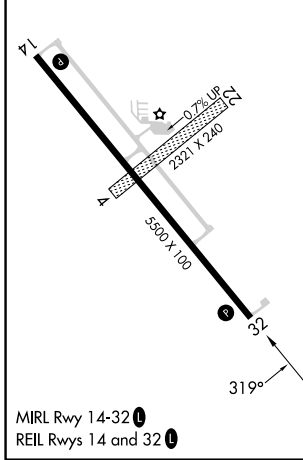
PERRY MUNI (P.R.O)

RNP APCH - GPS.	MISSED APPROACH: Climb to 1500 then climbing left turn to 3500 direct LINDE and hold.
<p>⚠ Circling NA to Rws 4 and 22. For uncompensated Baro-VNAV systems, LNAV/VNAV NA below -17°C or above 54°C.</p>	

AWOS-3 118.0	DES MOINES APP CON 123.9 360.7	UNICOM 122.8 (CTAF) 0
------------------------	--	--



ELEV 1013	TDZE 1010
-----------	-----------



1500	3500	LINDE	VGSI and RNAV glidepath not coincident (VGSI Angle 3.00/TCH 33).			
			PEVIY	CUNKU	EXPOW	4 NM Holding Pattern
			2.2 NM to RW32	2600		
			1.2 NM to RW32		139°	6000
					319°	3500
						GP 3.00° TCH 40
CATEGORY	A	B	C	D		
LPV DA		1260-3/4	250 (300-3/4)			
LNAV/VNAV DA		1310-7/8	300 (300-7/8)			
LNAV MDA		1380-1	370 (400-1)			
C CIRCLING	1440-1 427 (500-1)	1480-1 467 (500-1)	1600-1 1/2 587 (600-1 1/2)	1840-2 3/4 827 (900-2 3/4)		

NC-3, 26 DEC 2024 to 23 JAN 2025

NC-3, 26 DEC 2024 to 23 JAN 2025