

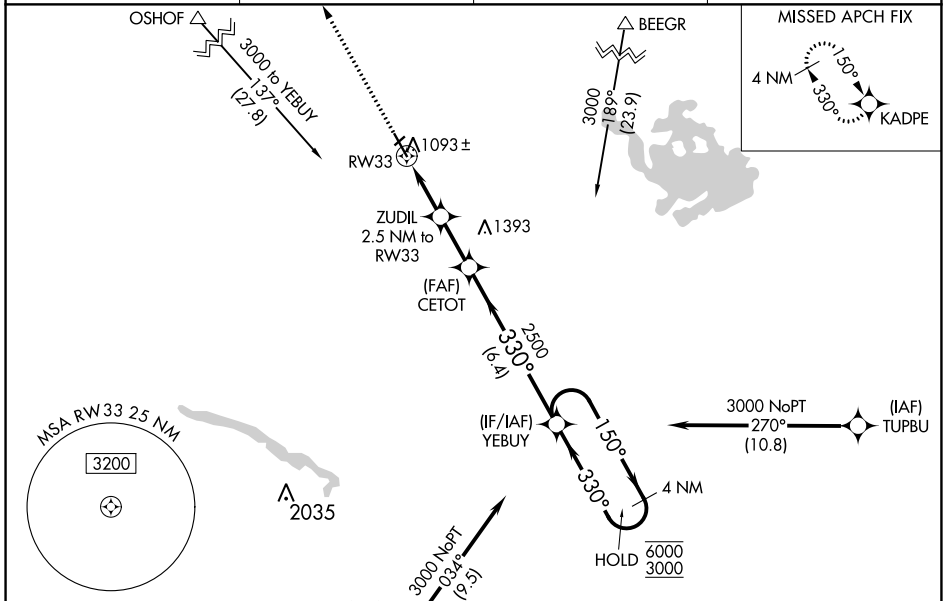
WAAS CH 56631 W33A	APP CRS 330°	Rwy Idg TDZE 1011 Apt Elev 1011
----------------------------------------	------------------------	-----------------------------------------------------

RNAV (GPS) RWY 33

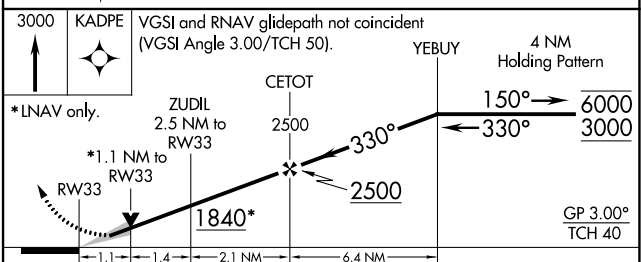
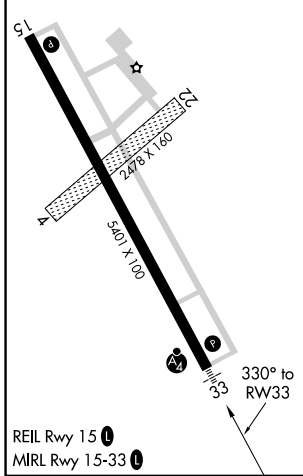
NEW ULM MUNI (ULM)

RNP APCH.	MALSF	MISSED APPROACH: Climb to 3000 direct KADPE and hold.
<p>⚠ Circling NA to Rwy 4 and 22. For uncompensated Baro-VNAV systems, LNAV/VNAV NA below -17°C or above 54°C. Inop table does not apply to LPV all Cats. For inop ALS, increase LNAV/VNAV all Cats visibility to 7/5 SM, LNAV Cat D to 1 1/8 SM.</p>		

AWOS-3 118.325	MINNEAPOLIS CENTER 127.1 290.2	GCO 121.725	UNICOM 123.0 (CTAF) 0
--------------------------	------------------------------------------	-----------------------	---------------------------------



ELEV 1011	TDZE 1011
-----------	-----------



CATEGORY	A	B	C	D
LPV DA		1211-3/4	200 (200-3/4)	
LNAV/VNAV DA		1312-3/4	301 (400-3/4)	
LNAV MDA	1400-3/4	389 (400-3/4)	1400-7/8	389 (400-7/8)
<input checked="" type="checkbox"/> CIRCLING	1440-1 429 (500-1)	1500-1 489 (500-1)	1620-1 3/4 609 (700-1 3/4)	1620-2 609 (700-2)

NC-1, 26 DEC 2024 to 23 JAN 2025

NC-1, 26 DEC 2024 to 23 JAN 2025