


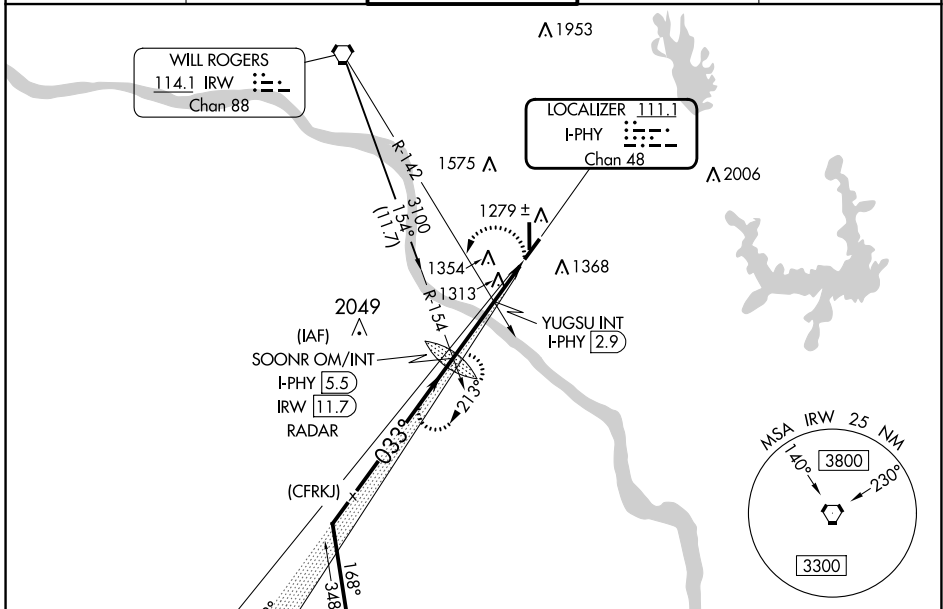
LOC/DME I-PHY 111.1 Chan 48	APP CRS 033°	Rwy Idg 4748 TDZE 1177 Apt Elev 1182
---	------------------------	---

LOC RWY 3

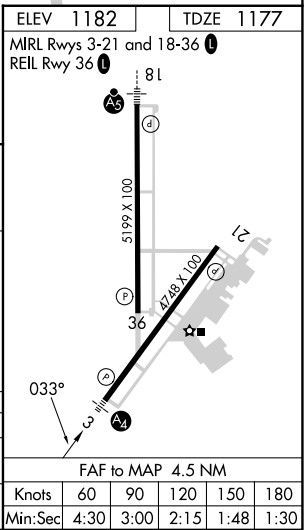
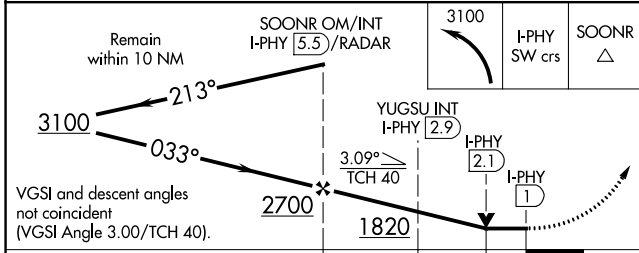
UNIVERSITY OF OKLAHOMA WESTHEIMER (OUN)

<p>⚠ When local altimeter setting not received, use OKC Will Rogers Intl altimeter setting and increase all MDA 60 feet; increase S-3 Cat C/D visibility ¼ mile, Circling Cat C/D ¼ mile. For inop MALS increase S-3 Cat C/D visibility to 1¾ mile. For inop MALS when using OKC Will Rogers Intl altimeter setting, increase S-3 Cat C/D visibility to 1¾ mile. Circling NA southeast of Rwy 3 and 21.</p>	<p>MALS</p>  <p>MISSED APPROACH: Climbing left turn to 3100 on I-PHY SW course to SOONR OM/INT/I-PHY 5.5 DME/RADAR and hold, continue climb-in-hold to 3100.</p>
--	--

AWOS-3PT 119.55	OKE CITY APP CON 120.45 288.325	WESTHEIMER TOWER* 118.0 (CTAF) 0	GND CON 121.6	UNICOM 122.95
---------------------------	---	--	-------------------------	-------------------------



ELEV 1182	TDZE 1177	
MRL Rwys 3-21 and 18-36		
REIL Rwy 36		



CATEGORY	A	B	C	D
S-3	1580-¾	403 (400-¾)	1580-1	403 (400-1)
C CIRCLING	1660-1	478 (500-1)	1940-2¼ 758 (800-2¼)	1940-2½ 758 (800-2½)

SC-1, 26 DEC 2024 to 23 JAN 2025

SC-1, 26 DEC 2024 to 23 JAN 2025