

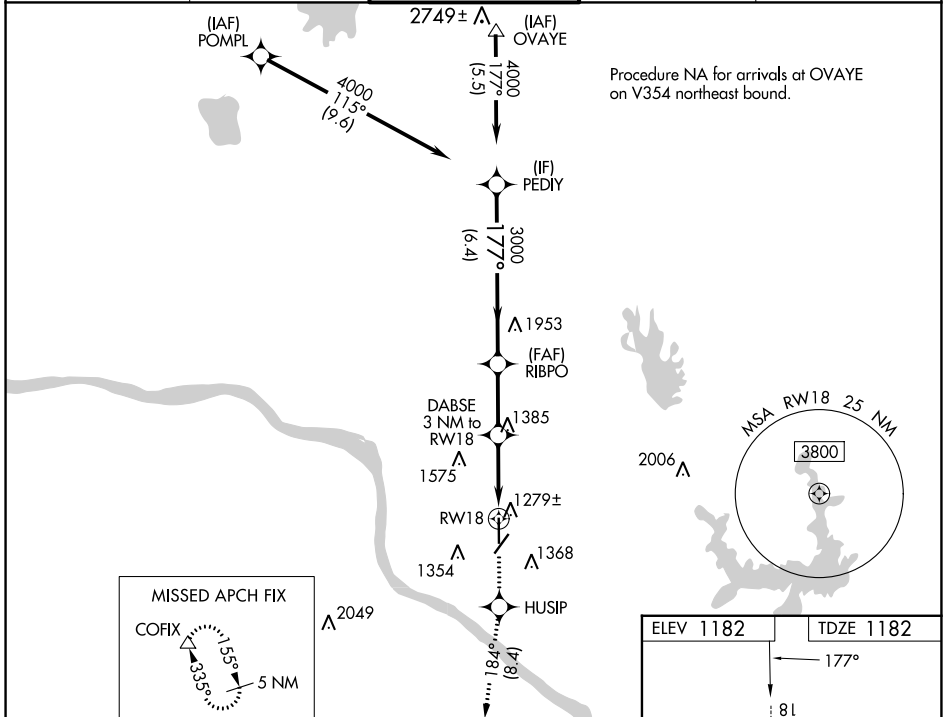
WAAS CH 58302 W18A	APP CRS 177°	Rwy Idg TDZE 1182 Apt Elev 1182	5199
--	------------------------	---	-------------

RNAV (GPS) RWY 18

UNIVERSITY OF OKLAHOMA WESTHEIMER (OUN)

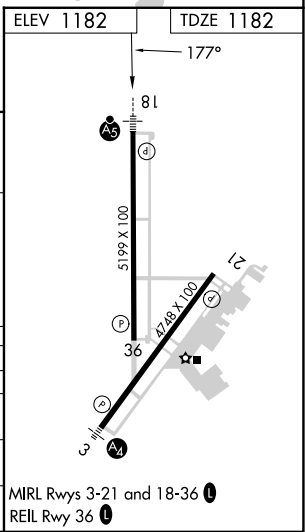
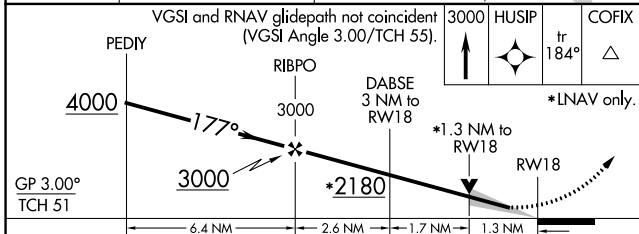
RNP APCH.	MALSR	MISSED APPROACH: Climb to 3000 direct HUSIP and track 184° to COFIX and hold.
<p>▼ For uncompensated Baro-VNAV systems, LNAV/VNAV NA below -17°C or above 54°C. For inop ALS, increase LNAV/VNAV all Cats visibility to 7/8 SM. Circling NA southeast of Rwy 3-21.</p>		

AWOS-3PT 119.55	OKE CITY APP CON 120.45 288.325	WESTHEIMER TOWER ★ 118.0 (CTAF)	GND CON 121.6	UNICOM 122.95
---------------------------	---	---	-------------------------	-------------------------



SC-1, 26 DEC 2024 to 23 JAN 2025

SC-1, 26 DEC 2024 to 23 JAN 2025



GP 3.00° TCH 51	<p>VGSI and RNAV glidepath not coincident (VGSI Angle 3.00/TCH 55).</p>			
CATEGORY	A	B	C	D
LPV DA	1382-1/2		200 (200-1/2)	
LNAV/DA VNAV	1490-1/2		308 (400-1/2)	
LNAV MDA	1640-1/2	458 (500-1/2)	1640-7/8	458 (500-7/8)
CIRCLING	1660-1	478 (500-1)	1940-2 1/4 758 (800-2 1/4)	1940-2 1/2 758 (800-2 1/2)