

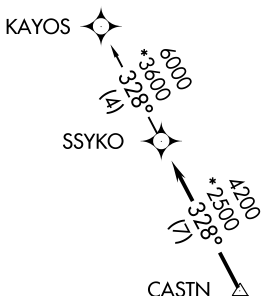
(SSYKO3.SSYKO) 23166

# SSYKO THREE DEPARTURE (RNAV)

UNIVERSITY OF OKLAHOMA WESTHEIMER (OUN)  
AL-5672 (FAA)  
NORMAN, OKLAHOMA

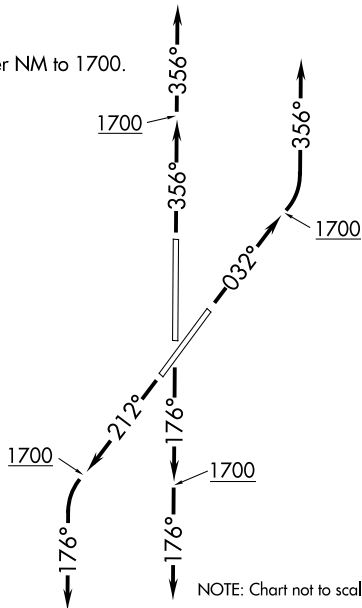
AWOS-3PT  
119.55  
GND CON  
121.6  
WESTHEIMER TOWER \*  
118.0  
OKE CITY DEP CON  
120.45 288.325

**TOP ALTITUDE:  
ASSIGNED BY ATC**



## TAKEOFF MINIMUMS

Rwys 3, 18, 21, 36: Standard with minimum climb of 500' per NM to 1700.



- NOTE: RADAR required.
- NOTE: DME/DME/IRU or GPS required.
- NOTE: RNAV 1.

NOTE: Chart not to scale.



## DEPARTURE ROUTE DESCRIPTION

**TAKEOFF RUNWAY 3:** Climb on heading 032° to 1700, then left turn heading 356° or as assigned by ATC, expect RADAR vectors to CASTN, thence . . .

**TAKEOFF RUNWAY 18:** Climb on heading 176° to 1700, then heading 176° or as assigned by ATC, expect RADAR vectors to CASTN, thence . . .

**TAKEOFF RUNWAY 21:** Climb on heading 212° to 1700, then left turn heading 176° or as assigned by ATC, expect RADAR vectors to CASTN, thence . . .

**TAKEOFF RUNWAY 36:** Climb on heading 356° to 1700, then heading 356° or as assigned by ATC, expect RADAR vectors to CASTN, thence . . .

. . . on track 328° to SSYKO, then on (transition). Maintain 3000 or as assigned by ATC. Expect filed altitude 10 minutes after departure.

KAYOS TRANSITION (SSYKO3.KAYOS)

# SSYKO THREE DEPARTURE (RNAV)

(SSYKO3.SSYKO) 07DEC17

NORMAN, OKLAHOMA  
UNIVERSITY OF OKLAHOMA WESTHEIMER (OUN)

SC-1, 26 DEC 2024 to 23 JAN 2025

SC-1, 26 DEC 2024 to 23 JAN 2025