

LOC/DME I-MSV <b>109.1</b> Chan <b>28</b>	APP CRS <b>155°</b>	Rwy Ldg <b>5900</b> TDZE <b>1403</b> Apt Elev <b>1403</b>
---	------------------------	---

# ILS or LOC RWY 15

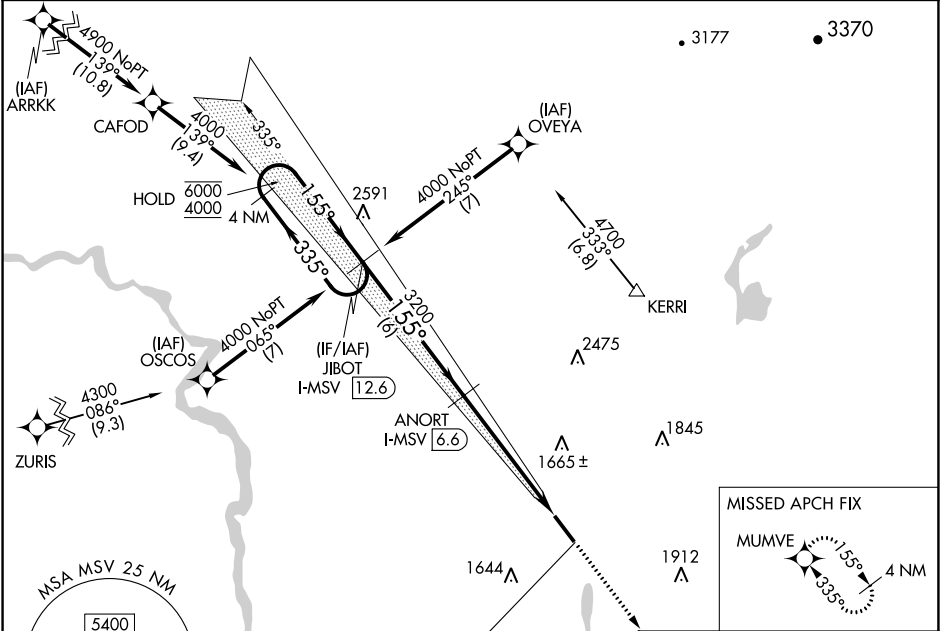
SULLIVAN COUNTY INTL (MSV)

RNP APCH - GPS.

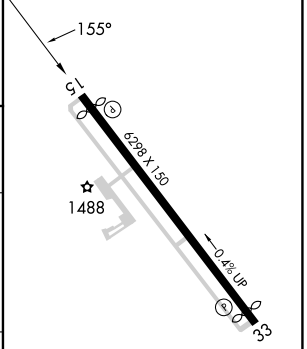
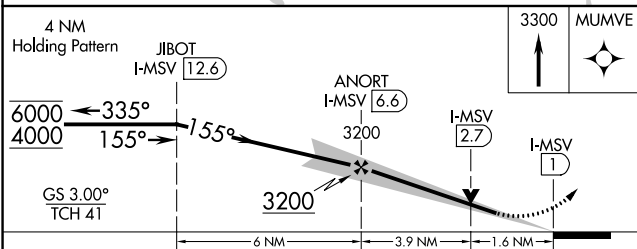
**⚠** VDP NA when using New York Stewart Intl altimeter setting. When local altimeter setting not received, use New York Stewart Intl altimeter setting; increase S-ILS 15 DA to 1858 feet and all visibilities  $\frac{1}{2}$  SM; increase all MDAs 220 feet and S-LOC 15 visibility Cat B, C and D  $\frac{1}{2}$  SM, and Circling Cat B, C and D visibilities  $\frac{1}{4}$  SM.

MISSED APPROACH: Climb to 3300 direct MUMVE and hold.

AWOS-3PT <b>124.725</b>	NEW YORK APP CON <b>132.75 363.1</b>	CLNC DEL <b>121.6</b>	UNICOM <b>122.8 (CTAF) 0</b>
----------------------------	---	--------------------------	---------------------------------



ELEV 1403	<b>D</b> TDZE 1403
-----------	--------------------



CATEGORY	A	B	C	D
S-ILS 15		1653- $\frac{3}{4}$	250 (300- $\frac{3}{4}$ )	
S-LOC 15	1960-1 557 (600-1)		1960-1 $\frac{3}{4}$ 557 (600-1 $\frac{3}{4}$ )	
<b>C</b> CIRCLING	1960-1 557 (600-1)		2020-1 $\frac{3}{4}$ 617 (700-1 $\frac{3}{4}$ )	2180-2 $\frac{1}{2}$ 777 (800-2 $\frac{1}{2}$ )

REIL Rwy 15 and 33 <b>0</b>					
HRL Rwy 15-33 <b>0</b>					
FAF to MAP 5.5 NM					
Knots	60	90	120	150	180
Min:Sec	5:30	3:40	2:45	2:12	1:50

NE-2, 26 DEC 2024 to 23 JAN 2025

NE-2, 26 DEC 2024 to 23 JAN 2025