

WAAS CH 56615 W15A	APP CRS 155°	Rwy Ldg TDZE Apt Elev	5900 1403 1403
--	------------------------	-----------------------------	---

RNAV (GPS) RWY 15

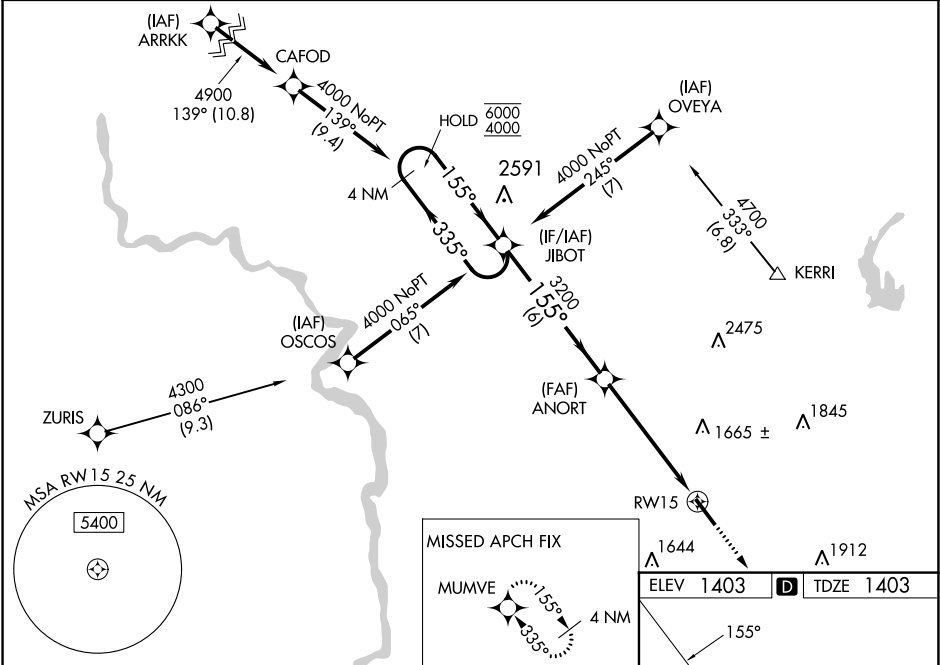
SULLIVAN COUNTY INTL (MSV)

RNP APCH - GPS.

▼ Baro-VNAV and VDP NA when using New York Stewart Intl altimeter setting. For uncompensated Baro-VNAV systems, LNAV/VNAV NA below -17°C or above 54°C. When local altimeter setting not received, use New York Stewart Intl altimeter setting; increase LPV DA to 1858 feet and all visibilities $\frac{3}{8}$ SM; increase LNAV/VNAV DA to 2077 feet and all visibilities $\frac{1}{2}$ SM; increase all MDAs 220 feet and LNAV visibility Cat B, C and D $\frac{3}{8}$ SM, and Circling visibility Cat B, C, and D $\frac{3}{4}$ SM.

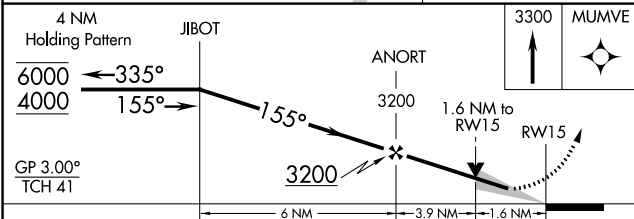
MISSED APPROACH:
Climb to 3300 direct MUMVE and hold.

AWOS-3PT 124.725	NEW YORK APP CON 132.75 363.1	CLNC DEL 121.6	UNICOM 122.8 (CTAF) 0
----------------------------	---	--------------------------	---------------------------------



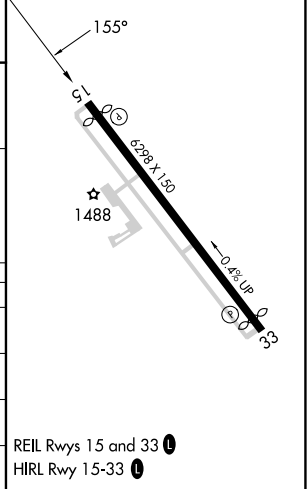
NE-2, 26 DEC 2024 to 23 JAN 2025

NE-2, 26 DEC 2024 to 23 JAN 2025



ELEV 1403	D	TDZE 1403
-----------	----------	-----------

CATEGORY	A	B	C	D
LPV DA	1653- $\frac{3}{4}$		250 (300- $\frac{3}{4}$)	
LNAV/VNAV DA	1872-1 $\frac{3}{8}$		469 (500-1 $\frac{3}{8}$)	
LNAV MDA	1980-1 577 (600-1)		1980-1 $\frac{5}{8}$ 577 (600-1 $\frac{5}{8}$)	
CIRCLING	1980-1 577 (600-1)		2020-1 $\frac{3}{4}$ 617 (700-1 $\frac{3}{4}$) 2180-2 $\frac{1}{2}$ 777 (800-2 $\frac{1}{2}$)	



REIL Rwy 15 and 33 **0**
HIRL Rwy 15-33 **0**