

22251

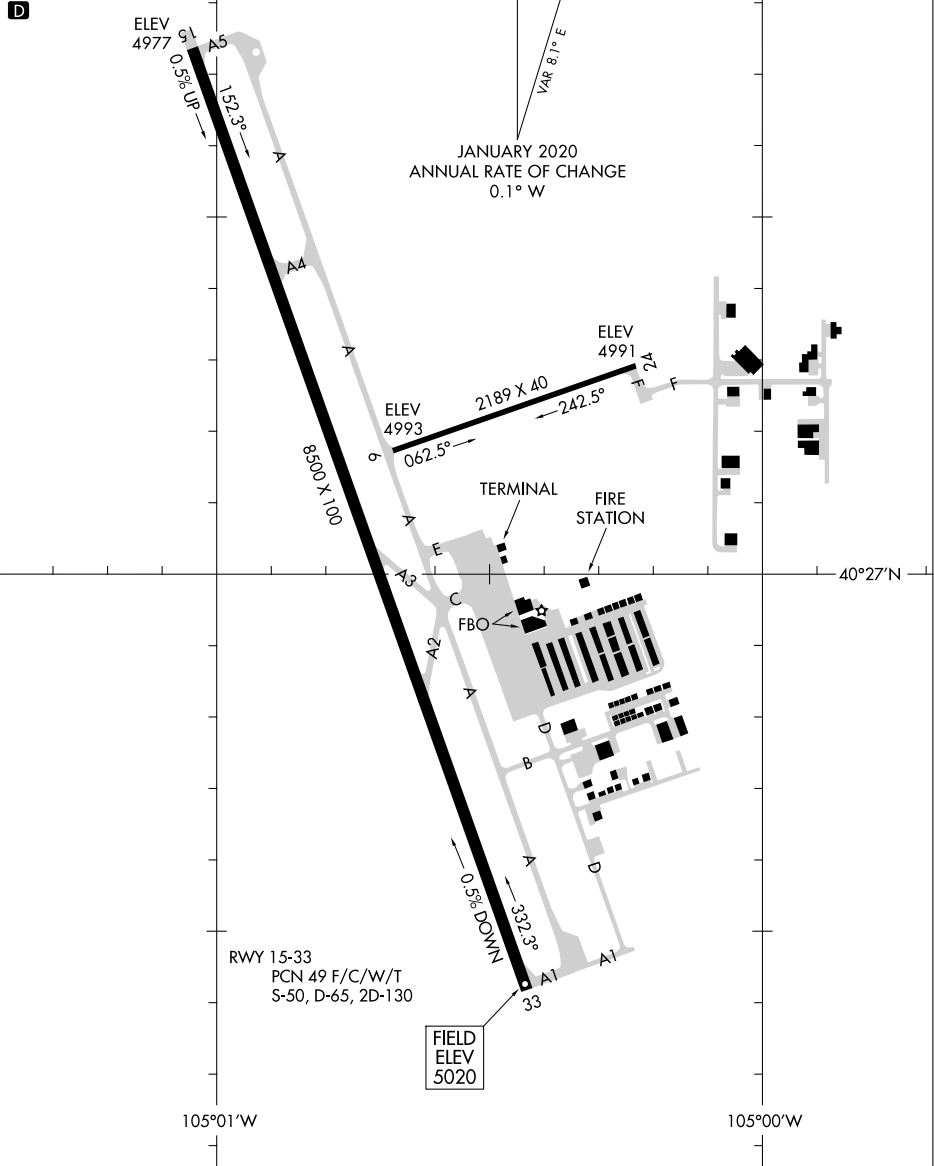
AIRPORT DIAGRAM

NORTHERN COLORADO RGNL (F/NL)
FORT COLLINS/LOVELAND, COLORADO

AL-5677 (FAA)

ATIS
135.075
NOCO TOWER *
118.4
GND CON
121.65
CLNC DEL
120.25 (When Tower Closed)

CAUTION: BE ALERT TO RUNWAY CROSSING CLEARANCES.
READEBACK OF ALL RUNWAY HOLDING INSTRUCTIONS IS REQUIRED.



SW-1, 26 DEC 2024 to 23 JAN 2025

SW-1, 26 DEC 2024 to 23 JAN 2025

AIRPORT DIAGRAM

FORT COLLINS/LOVELAND, COLORADO
NORTHERN COLORADO RGNL (F/NL)

22251