

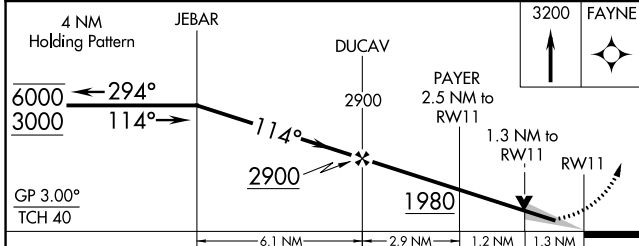
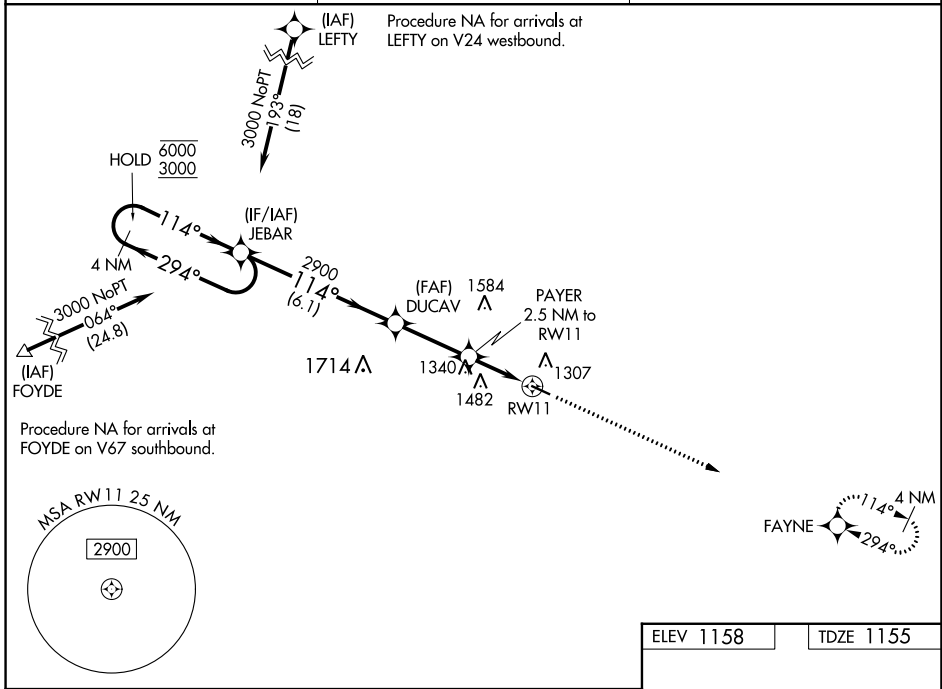
WAAS CH <b>78021</b> <b>W11A</b>	APP CRS <b>114°</b>	Rwy Idg <b>4001</b> TDZE <b>1155</b> Apt Elev <b>1158</b>
--	------------------------	---

# RNAV (GPS) RWY 11

DECORAH MUNI (DEH)

RNP APCH - GPS.	MISSED APPROACH: Climb to 3200 direct FAYNE and hold.
<p>▼ For uncompensated Baro-VNAV systems, LNAV/VNAV NA below -17°C or above 54°C.</p>	

AWOS-3 <b>120.925</b>	MINNEAPOLIS CENTER <b>118.85</b>	UNICOM <b>122.8</b> (CTAF) <b>0</b>
--------------------------	-------------------------------------	--



ELEV 1158	TDZE 1155
<p>REIL Rwy 11 and 29 <b>0</b> MIRL Rwy 11-29 <b>0</b></p>	

CATEGORY	A	B	C	D
LPV DA	1405-1	250 (300-1)		NA
LNAV/VNAV DA	1405-1	250 (300-1)		NA
LNAV MDA	1600-1	445 (500-1)		NA
<b>C</b> CIRCLING	1620-1	462 (500-1)		NA

NC-3, 26 DEC 2024 to 23 JAN 2025

NC-3, 26 DEC 2024 to 23 JAN 2025