

WAAS CH 42516 W36A	APP CRS 005°	Rwy Idg TDZE Apt Elev	4756 1197 1197
--	------------------------	-----------------------------	---

RNAV (GPS) RWY 36

LE MARS MUNI (L.R.J)

RNP APCH - GPS.

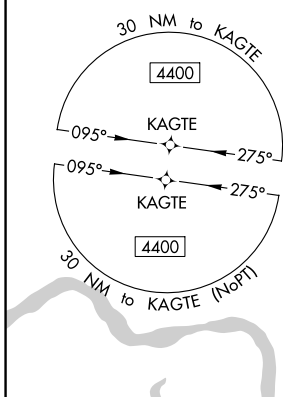
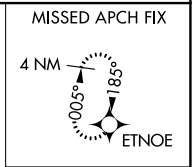
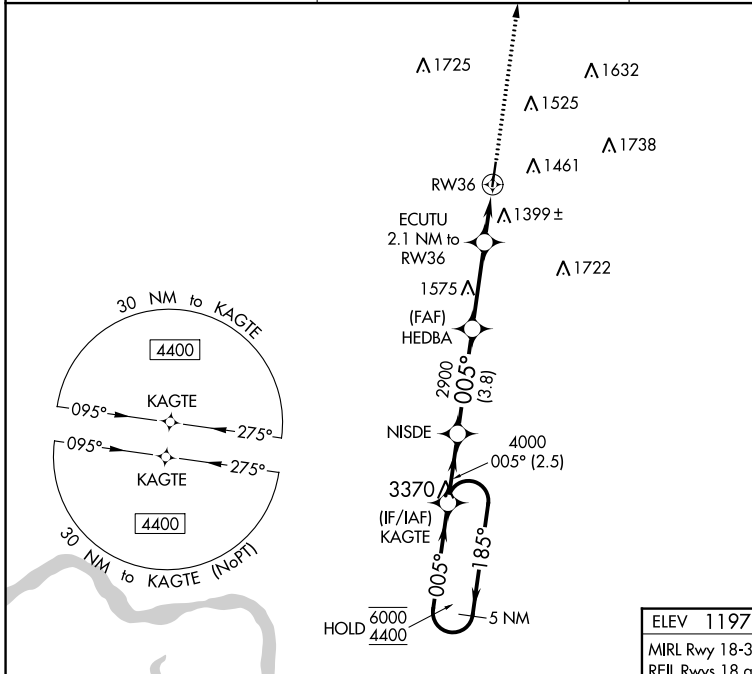
⚠ Rwy 36 helicopter visibility reduction below 1 SM NA. For uncompensated Baro-VNAV systems, LNAV/VNAV NA below -24°C or above 54°C.

MISSED APPROACH: Climb to 4000 direct ETNOE and hold.

AWOS-3P
120.975

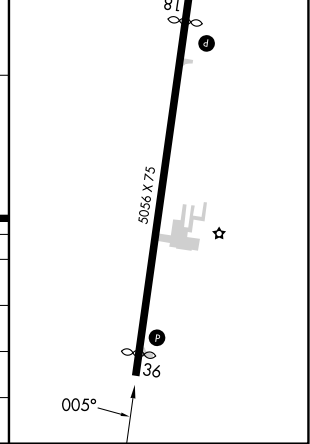
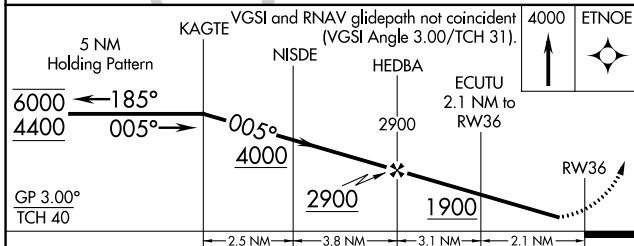
SIOUX CITY APP CON *
124.6 307.0

UNICOM
122.8 (CTAF) 0



ELEV 1197	TDZE 1197
-----------	-----------

MIRL Rwy 18-36
REIL Rwy 18 and 36



CATEGORY	A	B	C	D
LPV DA	1469-1 272 (300-1)			NA
LNAV/VNAV DA	1723-1 ⁷ / ₈ 526 (600-1 ⁷ / ₈)			NA
LNAV MDA	1660-1 463 (500-1)		1660-1 ³ / ₈ 463 (500-1 ³ / ₈)	NA
C CIRCLING	1760-1 563 (600-1)	1780-1 583 (600-1)	1840-1 ³ / ₄ 643 (700-1 ³ / ₄)	NA

NC-3, 26 DEC 2024 to 23 JAN 2025

NC-3, 26 DEC 2024 to 23 JAN 2025