

DESTIN, FLORIDA

AL-5680 (FAA)

24137

WAAS CH 48923 W14A	APP CRS 143°	Rwy Idg 5001 TDZE 22 Apt Elev 22
--	------------------------	---

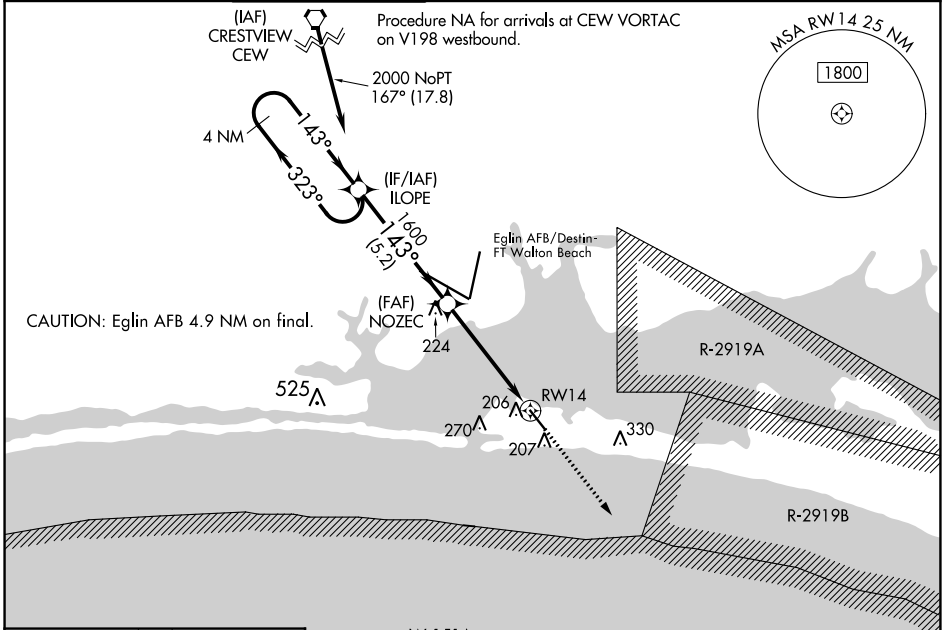
RNAV (GPS) RWY 14

DESTIN EXEC (DTS)

⚠ For uncompensated Baro-VNAV systems, LNAV/VNAV NA below 0°C (32°F) or above 54°C (130°F).
⚠ Baro-VNAV and VDP NA when using Crestview altimeter setting. Rwy 14 helicopter visibility reduction below 3/4 SM NA. DME/DME RNP-0.3 NA. When local altimeter setting not received, use Crestview altimeter setting and increase all DA/MDA 80 feet; increase LPV all Cats visibility 1/2 SM, LNAV/VNAV all Cats visibility 3/8 SM, increase LNAV Cats C and D 1/2 SM, and Circling Cats C and D 1/4 SM.

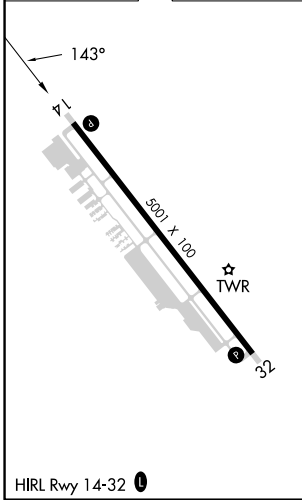
MISSED APPROACH:
Climb to 2000 direct AJLUP and hold.

ATIS 133.925	EGLIN APP CON 132.1 360.6	DESTIN TOWER ★ 118.45 (CTAF) 0	GND CON 121.6	CLNC DEL 121.6	CLNC DEL 127.7 377.2 (When twr closed)	UNICOM 123.075
------------------------	-------------------------------------	---	-------------------------	--------------------------	---	--------------------------



CAUTION: Eglin AFB 4.9 NM on final.

ELEV 22	TDZE 22
---------	---------



DESTIN, FLORIDA
Amdt 2C 07DEC17

W-151A

AJLUP 143° 323° 4 NM

4 NM Holding Pattern ILOPE

2000 ← 323° 143° →

NOZEC 1600

*1.2 NM to RWY 14

RWY 14

GP 3.00° TCH 43

5.2 NM 3.6 NM 1.2 NM

CATEGORY	A	B	C	D
LPV DA	272-1 250 (300-1)			
LNAV/VNAV DA	367-1 345 (400-1)			
LNAV MDA	460-1	438 (500-1)	460-1 438 (500-1)	438 (500-1)
CIRCLING	580-1 558 (600-1)		680-1 658 (700-1)	680-2 658 (700-2)

2000 AJLUP

*LNAV only.

30°24'N-86°28'W

RNAV (GPS) RWY 14

DESTIN EXEC (DTS)

SE-3, 26 DEC 2024 to 23 JAN 2025

SE-3, 26 DEC 2024 to 23 JAN 2025