

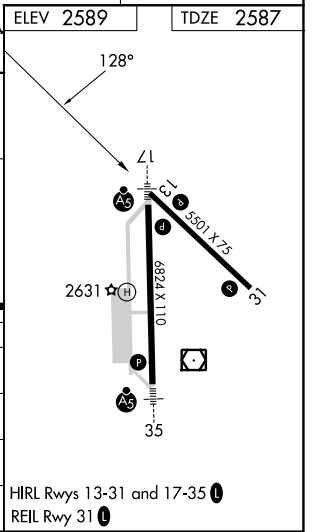
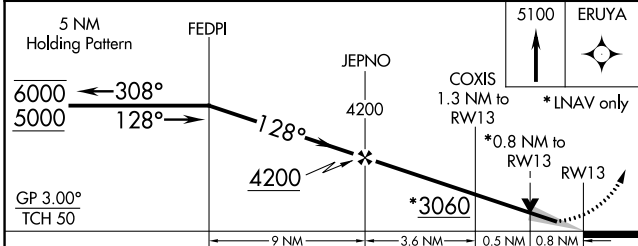
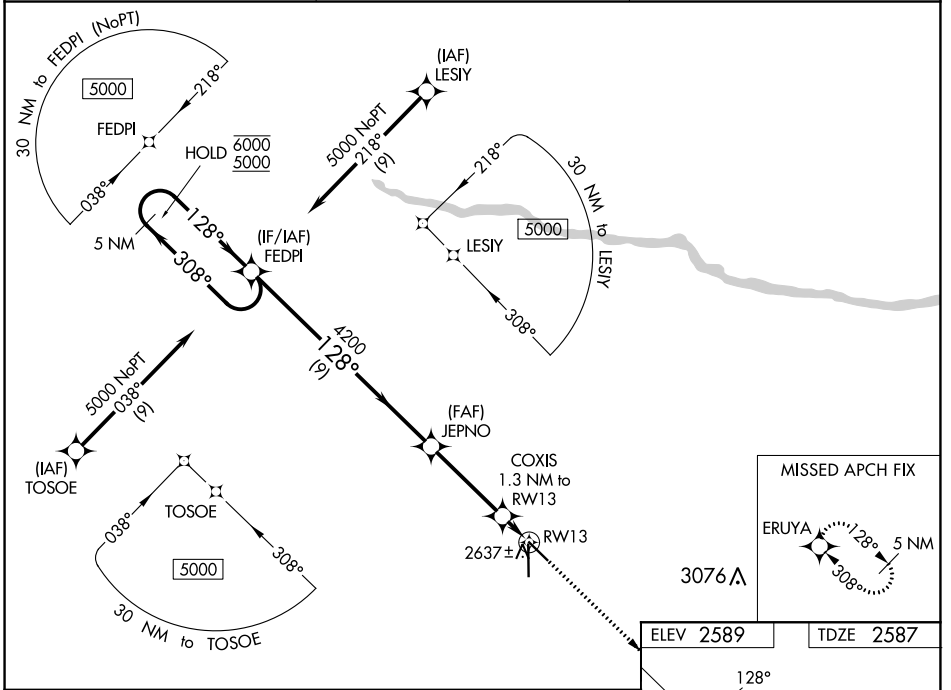
WAAS CH 99706 W13A	APP CRS 128°	Rwy Idg TDZE Apt Elev	5501 2587 2589
--	------------------------	-----------------------------	---

RNAV (GPS) RWY 13

AINSWORTH RGNL (A.NW)

RNP APCH.	MISSED APPROACH: Climb to 5100 direct ERUYA and hold, continue climb-in-hold to 5100.
<p>▼</p> <p>▲ For uncompensated Baro-VNAV systems, LNAV/VNAV NA below -20°C or above 54°C.</p>	

AWOS-3 118.325	DENVER CENTER 127.95 338.2	UNICOM 122.8 (CTAF) ①
--------------------------	--------------------------------------	---------------------------------



CATEGORY	A	B	C	D
IPV DA		2787-1	200 (200-1)	
LNAV/VNAV DA		2837-1	250 (300-1)	
LNAV MDA		2900-1	313 (400-1)	
CIRCLING	3000-1 411 (500-1)	3040-1 451 (500-1)	3040-1½ 451 (500-1½)	3200-2 611 (700-2)

NC-2, 26 DEC 2024 to 23 JAN 2025

NC-2, 26 DEC 2024 to 23 JAN 2025