


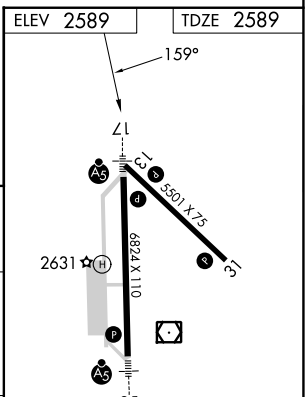
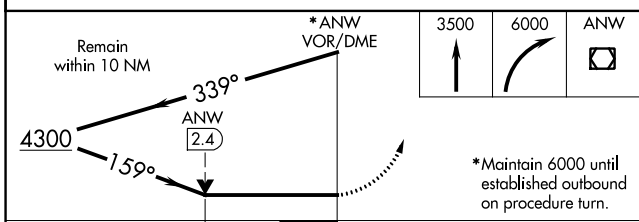
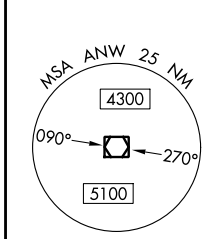
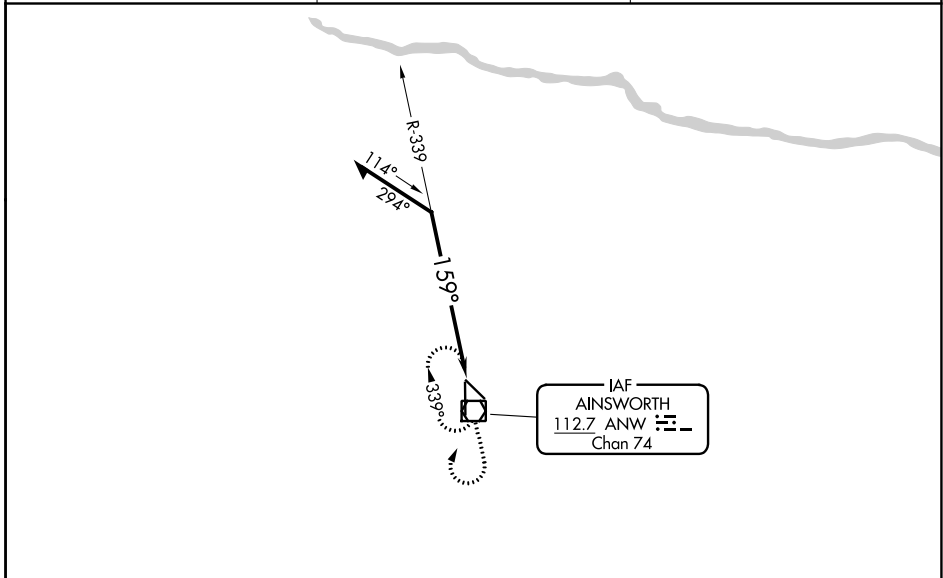
VOR/DME ANW 112.7 Chan 74	APP CRS 159°	Rwy Idg TDZE Apt Elev	6824 2589 2589
---	------------------------	-----------------------------	---

VOR RWY 17

AINSWORTH RGNL (A.N.W)

▼	MALSR 	MISSED APPROACH: Climb to 3500 then climbing right turn to 6000 direct ANW VOR/DME and hold.
---	--	--

AWOS-3 118.325	DENVER CENTER 127.95 338.2	UNICOM 122.8 (CTAF) ①
--------------------------	--------------------------------------	---------------------------------



CATEGORY	A	B	C	D
S-17	3060-1/2 471 (500-1/2)		3060-3/4 471 (500-3/4)	3060-1 471 (500-1)
① CIRCLING	3060-1 471 (500-1)		3060-1 1/2 471 (500-1 1/2)	3200-2 611 (700-2)

HIRL Rwys 13-31 and 17-35 ①
REIL Rwy 31 ①

NC-2, 26 DEC 2024 to 23 JAN 2025

NC-2, 26 DEC 2024 to 23 JAN 2025