

| | | |
|--|------------------------|---|
| LOC/DME I-SVH 111.75 Chan 54 (Y) | APP CRS 285° | Rwy Idg 6453 TDZE 967 Apt Elev 968 |
|--|------------------------|---|

ILS Z or LOC Z RWY 28

STATESVILLE RGNL (SVH)

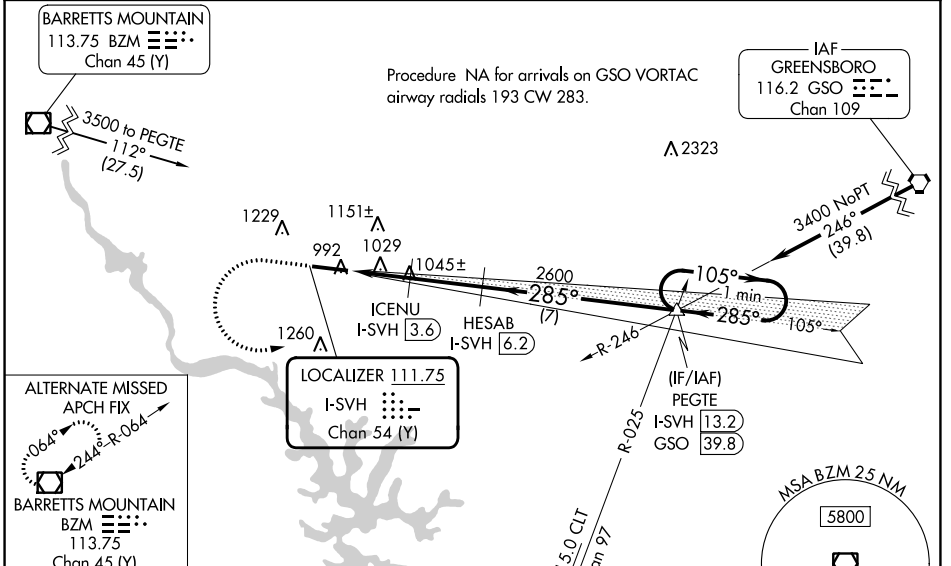
DME required.

When local altimeter setting not received, use Lincolnnton altimeter setting and increase ILS DA to 1219 and all MDA 60 feet; increase S-LOC 28 Cats C/D visibility 3/8 mile and Circling Cat C visibility 1/4 mile. VDP NA when using Lincolnnton altimeter setting. For inop MALSRS when using Lincolnnton altimeter setting, increase S-ILS 28 all Cats visibility to 3/8 mile and S-LOC 28 Cats C/D visibility to 1 mile.

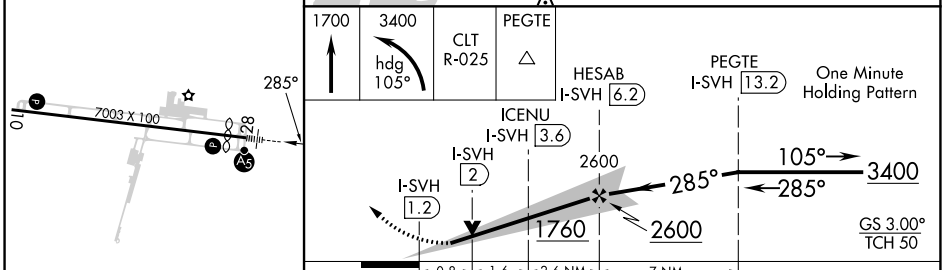
MALSRS

MISSED APPROACH: Climb to 1700 then climbing left turn to 3400 on heading 105° and CLT VOR/DME R-025 to PEGTE INT/I-SVH 13.2 DME and hold.

| | | |
|--------------------------|---------------------------------------|-----------------------------------|
| AWOS-3 119.225 | ATLANTA CENTER 125.15 263.0 | UNICOM 123.075 (CTAF) 0 |
|--------------------------|---------------------------------------|-----------------------------------|



| | | |
|----------|----------|----------|
| ELEV 968 | D | TDZE 967 |
|----------|----------|----------|



| CATEGORY | A | B | C | D |
|-------------------|------------------------|-----------------------|---------------------------|-----------------------|
| S-ILS 28 | 1167-1/2 200 (200-1/2) | | | |
| S-LOC 28 | 1280-1/2 313 (400-1/2) | | | |
| C CIRCLING | 1420-1 452 (500-1) | 1540-1 572 (600-1) | 1540-1/2 572 (600-1/2) | 1560-2 592 (600-2) |

SE-2, 26 DEC 2024 to 23 JAN 2025

SE-2, 26 DEC 2024 to 23 JAN 2025