

|  |                        |                             |   |
|--|------------------------|-----------------------------|---|
| WAAS<br>CH <b>78208</b><br><b>W35A</b> | APP CRS<br><b>354°</b> | Rwy Idg<br>TDZE<br>Apt Elev | <b>5001</b><br><b>880</b><br><b>901</b> |
|--|------------------------|-----------------------------|---|

# RNAV (GPS) RWY 35

TRI-CITY (PPF)

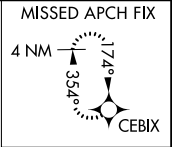
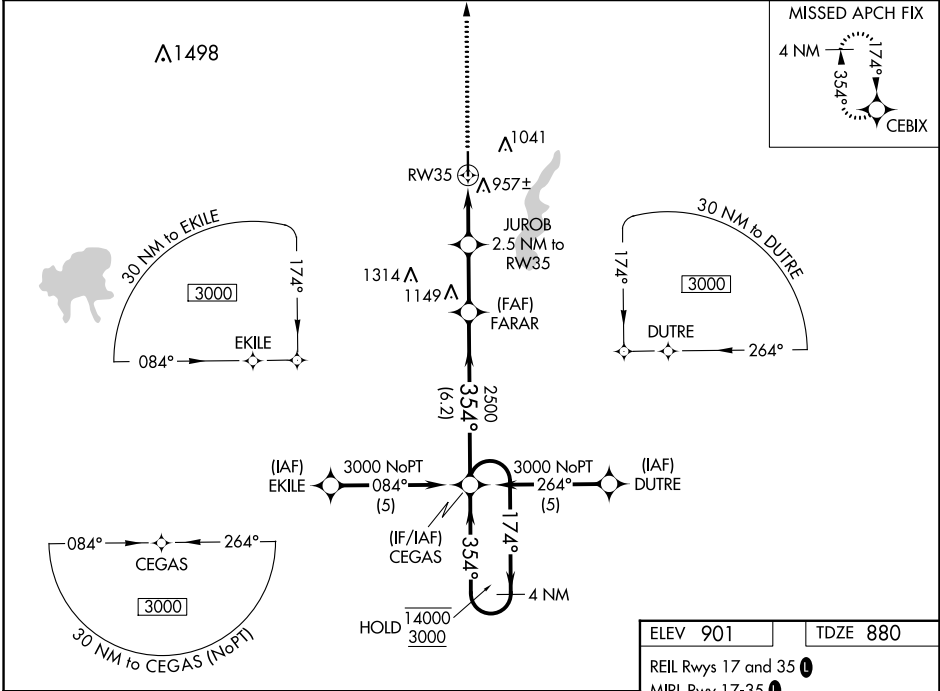
RNP APCH.  
 Procedure NA at night. Rwy 35 helicopter visibility reduction below 1 SM NA. For uncompensated Baro-VNAV systems, LNAV/VNAV NA below -16°C or above 54°C.

MISSED APPROACH: Climb to 3000 direct CEBIX and hold.

ASOS  
**118.175**

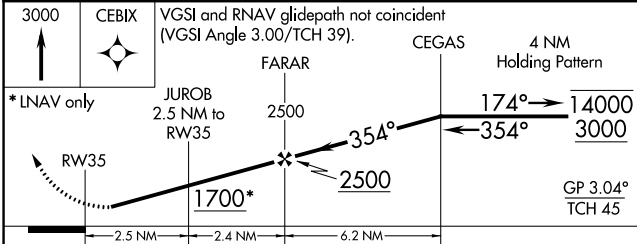
KANSAS CITY CENTER  
**128.6 282.325**

UNICOM  
**123.0 (CTAF) 0**



NC-2, 26 DEC 2024 to 23 JAN 2025

NC-2, 26 DEC 2024 to 23 JAN 2025



|          |          |
|----------|----------|
| ELEV 901 | TDZE 880 |
|----------|----------|

REIL Rwy 17 and 35  
MIRL Rwy 17-35

| CATEGORY     | A                     | B                     | C                         | D  |
|--------------|-----------------------|-----------------------|---------------------------|----|
| LPV DA       |                       | 1130-1 250 (300-1)    |                           | NA |
| LNAV/VNAV DA |                       | 1174-1 294 (300-1)    |                           | NA |
| LNAV MDA     | 1300-1                | 420 (400-1)           | 1300-1 ¼<br>420 (400-1 ¼) | NA |
| CIRCLING     | 1420-1<br>519 (600-1) | 1440-1<br>539 (600-1) | 1440-1 ½<br>539 (600-1 ½) | NA |

