

CHIEF NINE DEPARTURE

AL-5687 (FAA)

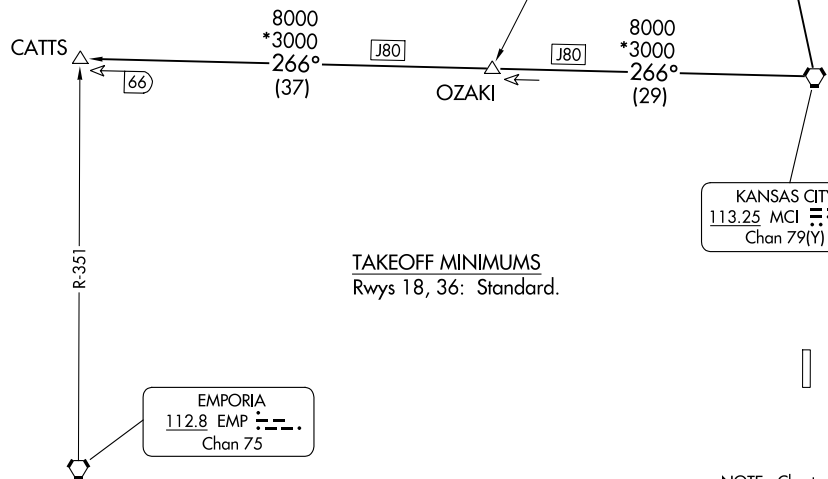
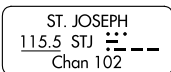
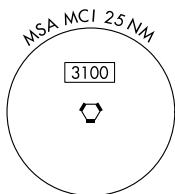
JOHNSON COUNTY EXEC (OJC)

OLATHE, KANSAS

**TOP ALTITUDE:
10000**

RADAR required.

KANSAS CITY DEP CON
118.9 251.075
ATIS
119.35



TAKEOFF MINIMUMS
Rwys 18, 36: Standard.

NOTE: Chart not to scale.

DEPARTURE ROUTE DESCRIPTION

TAKEOFF ALL RUNWAYS: Climb on assigned heading for RADAR vectors to appropriate route. Maintain 10000 or as assigned by ATC, expect filed altitude 10 minutes after departure.

CATTS TRANSITION (CHIEF9.CATTS): From over MCI VORTAC on MCI R-266 to CATTS.

ST. JOSEPH TRANSITION (CHIEF9.STJ): From over MCI VORTAC on MCI R-343 and STJ R-160 to STJ VORTAC.

CHIEF NINE DEPARTURE

(CHIEF9.MCI) 05OCT23

OLATHE, KANSAS
JOHNSON COUNTY EXEC (OJC)

NC-2, 26 DEC 2024 to 23 JAN 2025

NC-2, 26 DEC 2024 to 23 JAN 2025