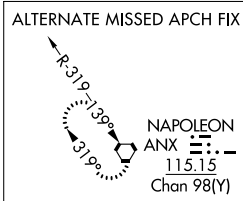
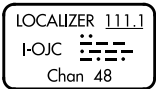
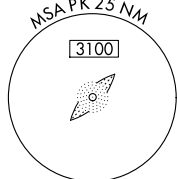
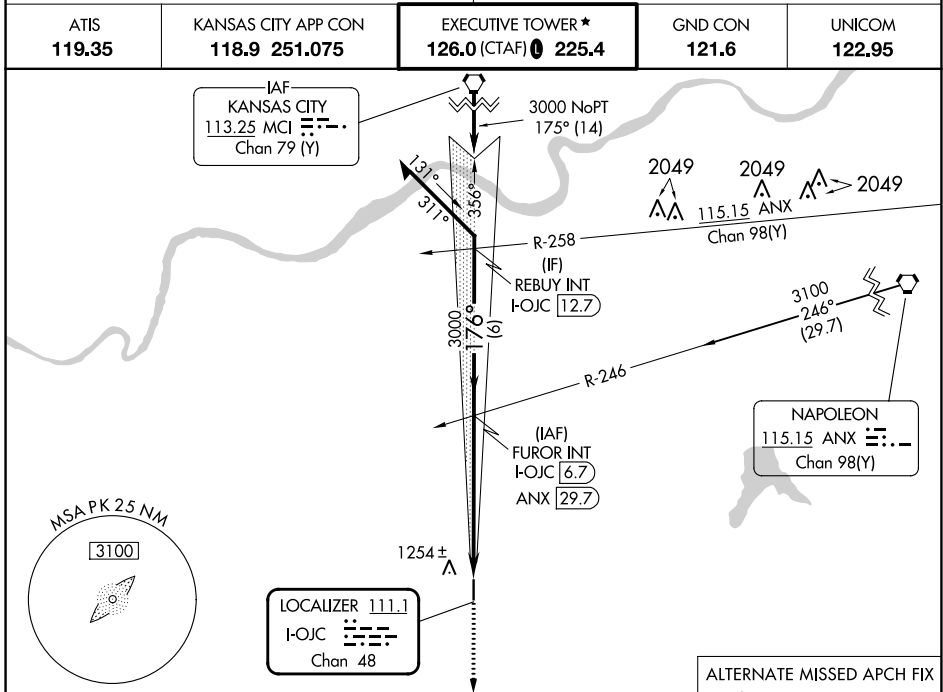


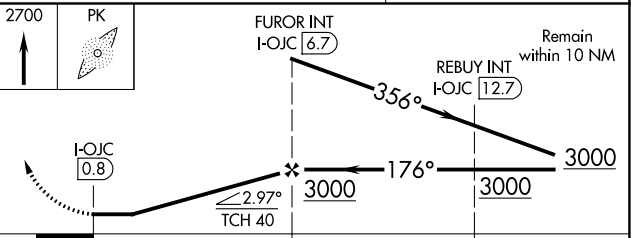
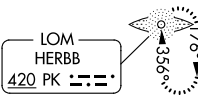
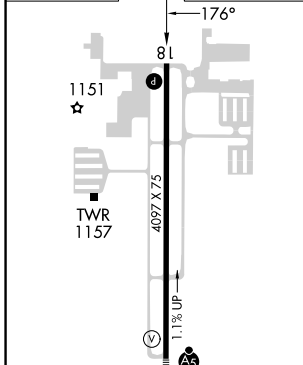
LOC/DME I-OJC 111.1 Chan 48	APP CRS 176°	Rwy Idg TDZE Apt Elev	4097 1096 1096
---	------------------------	-----------------------------	---

LOC RWY 18
JOHNSON COUNTY EXEC (OJC)

ADF required.		MISSED APPROACH: Climb to 2700 direct HERBB LOM and hold.		
ATIS 119.35	KANSAS CITY APP CON 118.9 251.075	EXECUTIVE TOWER * 126.0 (CTAF) 225.4	GND CON 121.6	UNICOM 122.95



ELEV 1096	D	TDZE 1096
-----------	----------	-----------



MIRL Rwy 18-36

FAF to MAP 5.9 NM

Knots	60	90	120	150	180
Min:Sec	5:54	3:56	2:57	2:22	1:58

CATEGORY	A	B	C	D
S-18	1540-1	444 (500-1)	1540-1 3/8 444 (500-1 3/8)	NA
C CIRCLING	1620-1	524 (600-1)	1620-1 1/2 524 (600-1 1/2)	NA

NC-2, 26 DEC 2024 to 23 JAN 2025

NC-2, 26 DEC 2024 to 23 JAN 2025