

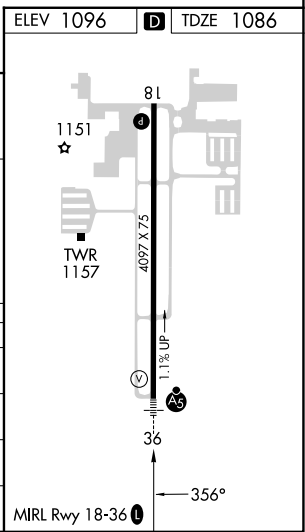
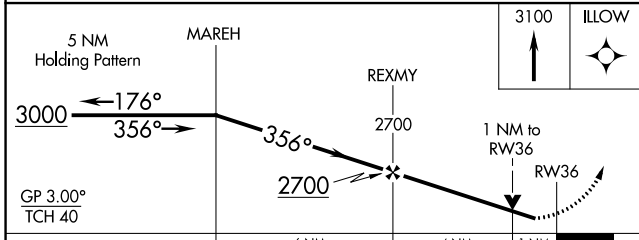
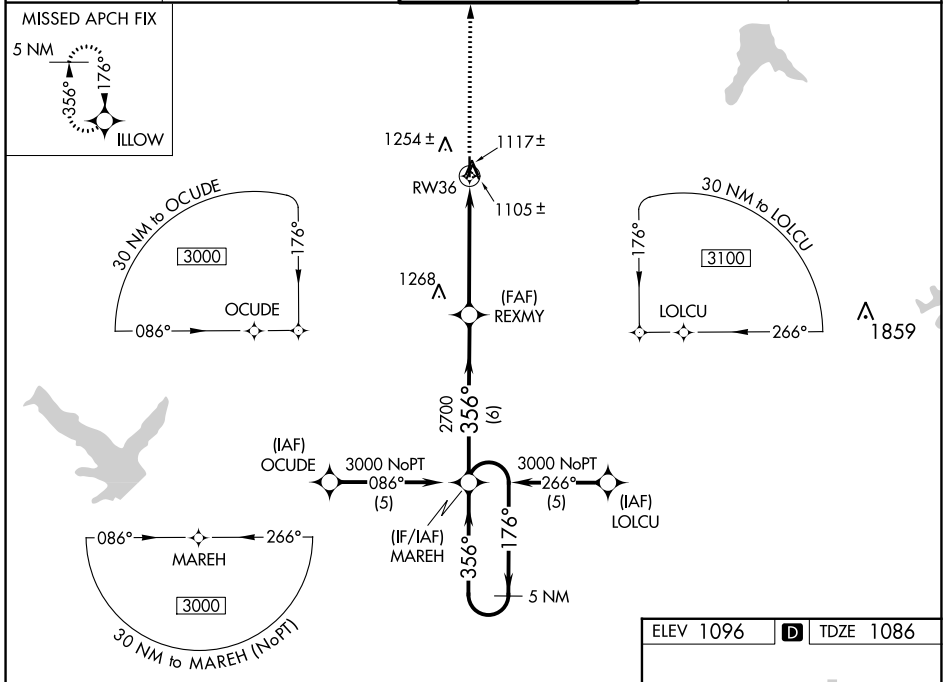
WAAS CH 82700 W36A	APP CRS 356°	Rwy Idg TDZE Apt Elev	4097 1086 1096
--	------------------------	-----------------------------	---

RNAV (GPS) RWY 36

JOHNSON COUNTY EXEC (OJC)

RNP APCH - GPS.		MALSR	MISSED APPROACH: Climb to 3100 direct ILLOW and hold.
<p>▼ For uncompensated Baro-VNAV systems, LNAV/VNAV NA below -17°C or above 54°C. Rwy 36 helicopter visibility reduction below 3/4 SM NA. For inop ALS, increase LPV, LNAV/VNAV and LNAV all Cats visibility to 1 SM.</p>			

ATIS 119.35	KANSAS CITY APP CON 118.9 251.075	EXECUTIVE TOWER* 126.0 (CTAF) 225.4	GND CON 121.6	UNICOM 122.95
-----------------------	---	---	-------------------------	-------------------------



CATEGORY	A	B	C	D
LPV DA	1336-3/4	250 (300-3/4)		NA
LNAV/VNAV DA	1355-3/4	269 (300-3/4)		NA
LNAV MDA	1400-3/4	314 (400-3/4)		NA
C CIRCLING	1620-1	524 (600-1)	1620-1 1/2 524 (600-1 1/2)	NA