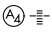


WAAS CH <b>45618</b> <b>W11A</b>	APP CRS <b>113°</b>	Rwy Idg <b>6200</b> TDZE <b>2976</b> Apt Elev <b>3004</b>
--	------------------------	---

# RNAV (GPS) RWY 11

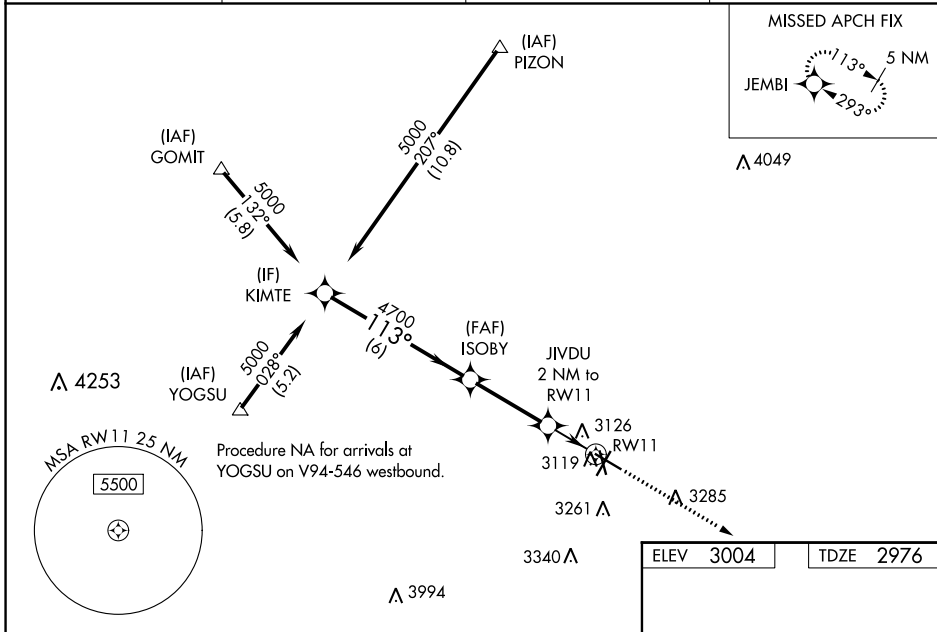
ODESSA-SCHLEMEYER FLD (ODO)

**⚠** Circling to Rwy 16 and 20 NA at night. For uncompensated Baro-VNAV systems, LNAV/VNAV NA below -20°C (-4°F) or above 54°C (130°F). DME/DME RNP-0.3 NA. Circling NA S of Rwys 2 and 34. When local altimeter setting not received use Midland Intl Air and Space Port altimeter setting and increase all DA 41 feet and all MDA 60 feet and increase LNAV/VNAV all Cats visibility 1/8 mile, LNAV Cat C and D and Circling Cat C visibility 1/4 mile. VDP NA with Midland Intl Air and Space Port altimeter setting. Baro-VNAV NA when using Midland Intl Air and Space Port altimeter setting.


MALS 

MISSED APPROACH: Climb to 5000 direct JEMBI and hold.

ASOS <b>119.275</b>	MIDLAND APP CON * <b>124.6 256.875</b>	CLNC DEL <b>121.7</b>	UNICOM <b>123.0</b> (CTAF) 
------------------------	---	--------------------------	---



KIMTE		ISOBY	JIVDU	JEMBI
5000		4700	2 NM to RW11	5000
GP 3.00°			*1.2 NM to RW11	*LNAV only
TCH 40				
6 NM		3.2 NM	0.8	1.2
CATEGORY	A	B	C	D
LPV DA		3176-3/4	200 (200-3/4)	
LNAV/VNAV DA		3347-1 1/4	371 (400-1 1/4)	
LNAV MDA	3380-1	404 (400-1)	3380-1 1/8	404 (400-1 1/8)
CIRCLING	3460-1	456 (500-1)	3600-1 1/2	3600-2
			596 (600-1 1/2)	596 (600-2)

MIRL Rwy 2-20, 11-29, and 16-34 

SC-3, 26 DEC 2024 to 23 JAN 2025

SC-3, 26 DEC 2024 to 23 JAN 2025