

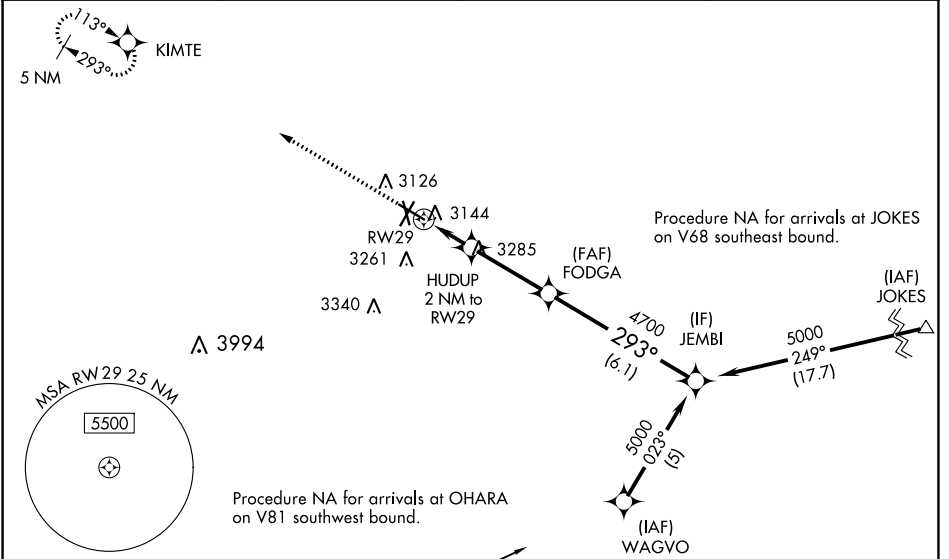
WAAS CH <b>86318</b> <b>W29A</b>	APP CRS <b>293°</b>	Rwy Idg TDZE Apt Elev	<b>6200</b> <b>2980</b> <b>3004</b>
--	------------------------	-----------------------------	---

# RNAV (GPS) RWY 29

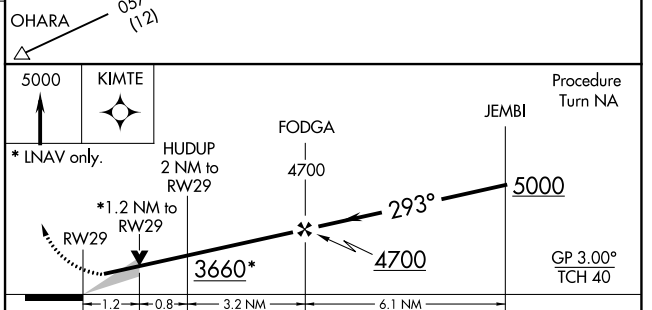
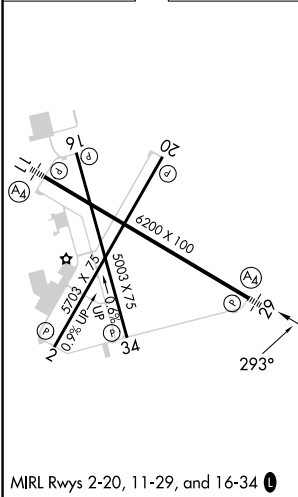
ODESSA-SCHLEMEYER FLD (ODO)

RNP APCH.	<p><b>MALS</b> </p> <p><b>MISSED APPROACH:</b> Climb to 5000 direct KIMTE and hold.</p>
<p><b>⚠</b> Baro-VNAV NA when using Midland Intl Air and Space Port altimeter setting. For uncompensated Baro-VNAV systems, LNAV/VNAV NA below -21°C or above 43°C. Circling NA south of Rwy 2 and 34. When local altimeter setting not received use Midland Intl Air and Space Port altimeter setting and increase all DAs 41 feet and all MDA's 60 feet and increase LNAV Cats C and D visibility 1/8 SM, Circling Cat C visibility 1/4 SM. VDP NA with Midland Intl Air and Space Port altimeter setting.</p>	

ASOS <b>119.275</b>	MIDLAND APP CON★ <b>124.6 256.875</b>	CLNC DEL <b>121.7</b>	UNICOM <b>123.0 (CTAF) 0</b>
------------------------	--	--------------------------	---------------------------------



ELEV 3004	TDZE 2980
-----------	-----------



CATEGORY	A	B	C	D
LPV DA		3180-3/4	200 (200-3/4)	
LNAV/VNAV DA		3414-1 1/2	434 (500-1 1/2)	
LNAV MDA	3400-1	420 (500-1)	3400-1 1/4	420 (500-1 1/4)
CIRCLING	3460-1	456 (500-1)	3600-1 1/2 596 (600-1 1/2)	3600-2 596 (600-2)

SC-3, 26 DEC 2024 to 23 JAN 2025

SC-3, 26 DEC 2024 to 23 JAN 2025