

LOC I-ERV 109.1	APP CRS 305°	Rwy Idg TDZE Apt Elev	5300 1589 1617
---------------------------	------------------------	-----------------------------	-------------------------------------------

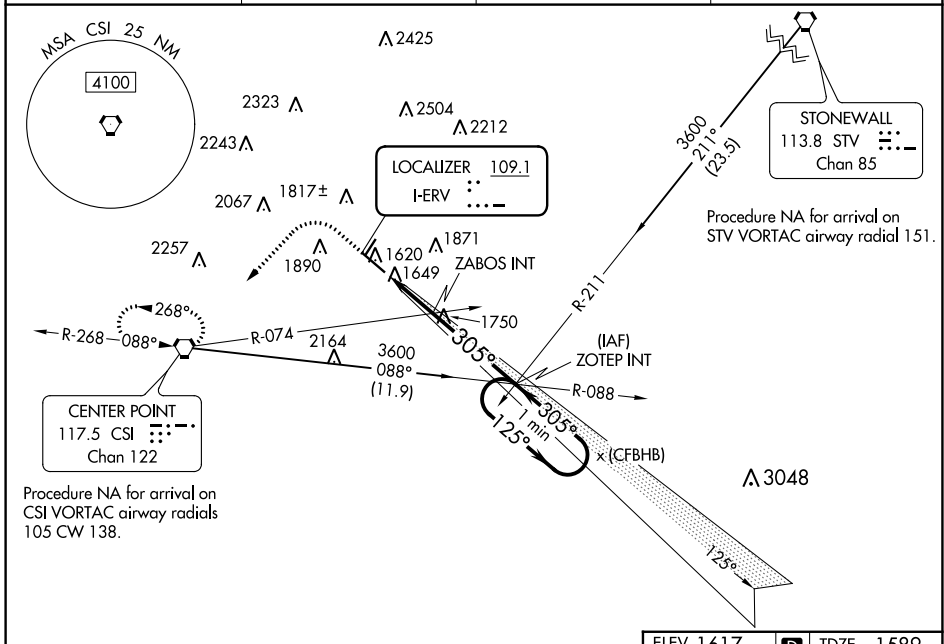
LOC RWY 30

KERRVILLE MUNI/LOUIS SCHREINER FLD (ERV)

▼
▲ NA

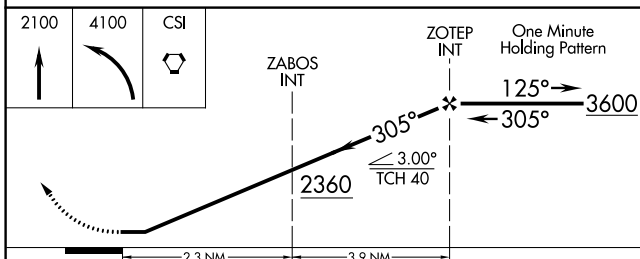
MISSED APPROACH: Climb to 2100 then climbing left turn to 4100 direct CSI VORTAC and hold, continue climb-in-hold to 4100.

AWOS-3 118.125	HOUSTON CENTER 134.95 269.4	CLNC DEL 134.95	UNICOM 122.7 (CTAF) 0
--------------------------	---------------------------------------	---------------------------	---------------------------------



SC-3, 26 DEC 2024 to 23 JAN 2025

SC-3, 26 DEC 2024 to 23 JAN 2025



CATEGORY	A	B	C	D
S-30	2360-1 771 (800-1)	2360-1¼ 771 (800-1¼)	2360-2½ 771 (800-2½)	771 (800-2½)
C CIRCLING	2360-1 743 (800-1)	2360-1¼ 743 (800-1¼)	2380-2½ 763 (800-2½)	2540-3 923 (1000-3)
ZABOS FIX MINIMUMS (DUAL VOR RECEIVERS REQUIRED)				
S-30	1900-1 311 (300-1)			
C CIRCLING	2260-1 643 (700-1)	2340-1 723 (800-1)	2380-2¼ 763 (800-2¼)	2540-3 923 (1000-3)

ELEV 1617 **D** TDZE 1589

REIL Rwy 12 and 30 **0**
MIRL Rwy 3-21 and 12-30 **0**

FAF to MAP 6.2 NM

Knots	60	90	120	150	180
Min:Sec	6:12	4:08	3:06	2:29	2:04

LOC RWY 30