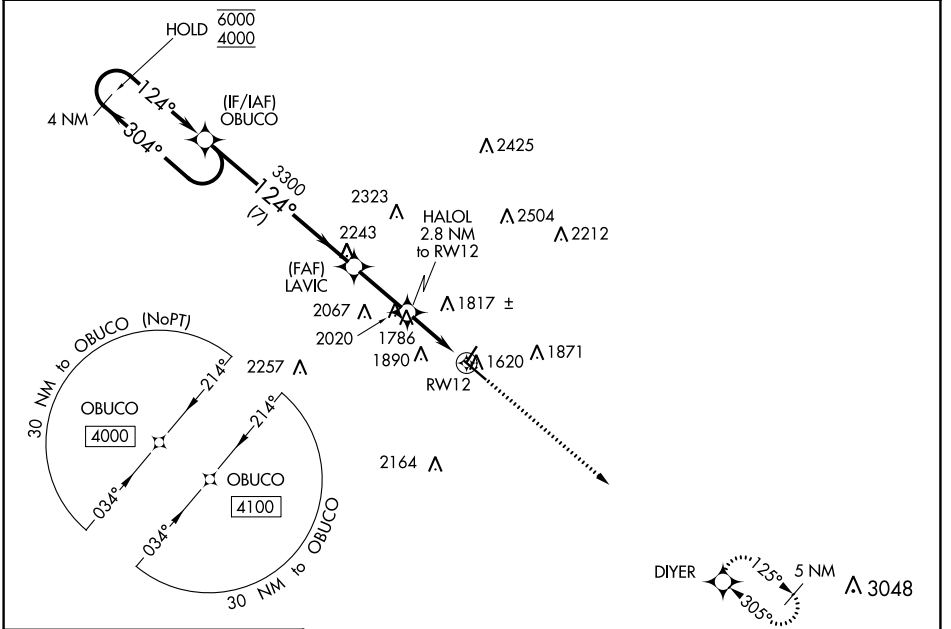


WAAS CH 45628 W12A	APP CRS 124°	Rwy Idg TDZE Apt Elev	5313 1586 1617
---------------------------------	------------------------	-----------------------------	---

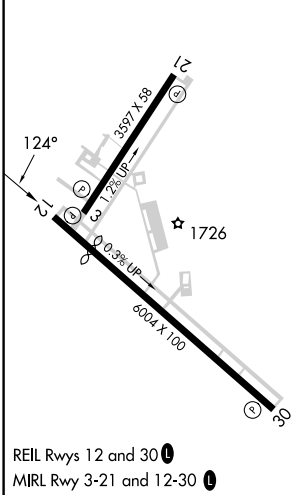
RNAV (GPS) RWY 12

KERRVILLE MUNI/LOUIS SCHREINER FLD (ERV)

RNP APCH.			MISSED APPROACH: Climb to 4100 direct DIYER and hold.
<p>⚠ For uncompensated Baro-VNAV systems, LNAV/VNAV NA below -18°C or above 54°C.</p>			
AWOS-3 118.125	HOUSTON CENTER 134.95 269.4	CLNC DEL 134.95	UNICOM 122.7 (CTAF) 0



ELEV 1617 **D** TDZE 1586



4 NM Holding Pattern		4100	DIYER	
OBUCO		* LNAV only.		
6000 ← 304°	← 124° →	124°		
4000		3300		
GP 3.00° TCH 40		LAVIC	HALOL 2.8 NM to RW12	
		* 2500	* 1.3 NM to RW12	
		7 NM	2.5 NM 1.5 NM 1.3 NM	
CATEGORY	A	B	C	D
LPV DA	1836-1		250 (300-1)	
LNAV/VNAV DA	1936-1½		350 (400-1½)	
LNAV MDA	2040-1	454 (500-1)	2040-1¾	454 (500-1¾)
C CIRCLING	2320-1 703 (800-1)	2340-1 723 (800-1)	2380-2¼ 763 (800-2¼)	2540-3 923 (1000-3)

REIL Rws 12 and 30 **0**
MIRL Rwy 3-21 and 12-30 **0**

SC-3, 26 DEC 2024 to 23 JAN 2025

SC-3, 26 DEC 2024 to 23 JAN 2025