

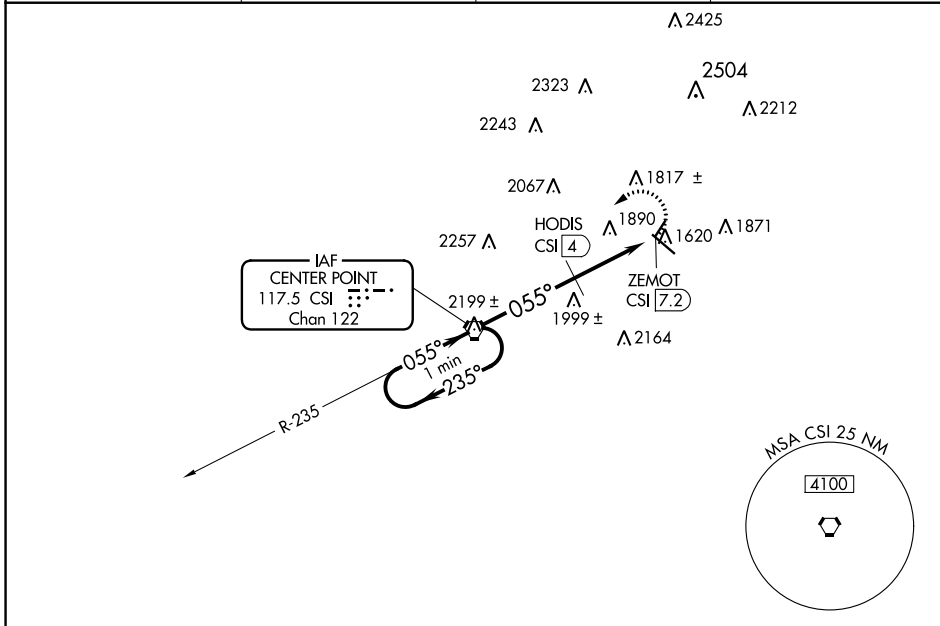
VORTAC CSI <b>117.5</b> Chan <b>122</b>	APP CRS <b>055°</b>	Rwy Idg TDZE Apt Elev <b>1617</b>	N/A N/A 1617
---	------------------------	--	--------------------

# VOR-A

KERRVILLE MUNI/LOUIS SCHREINER FLD (ERV)

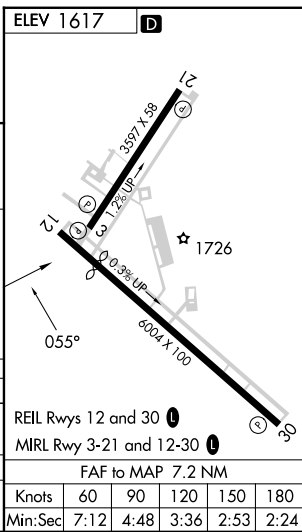
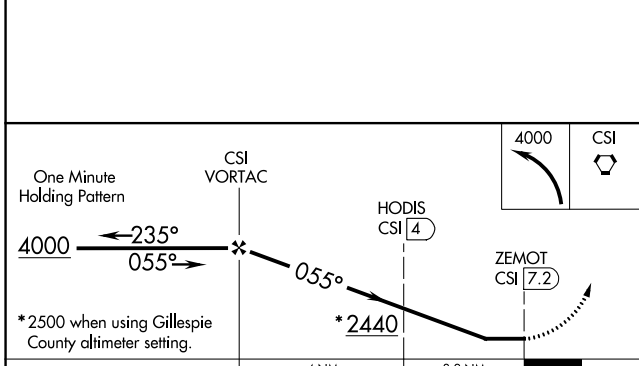
**▼** When local altimeter setting not received, use Fredericksburg altimeter setting and increase all MDAs 60 feet, increase Cat C visibility ¼ SM and HODIS fix minimums Cat C visibility ¼ SM.  
**▲** MISSED APPROACH: Climbing left turn to 4000 direct CSI VORTAC.

AWOS-3 <b>118.125</b>	HOUSTON CENTER <b>134.95 269.4</b>	CLNC DEL <b>134.95</b>	UNICOM <b>122.7 (CTAF) 0</b>
--------------------------	---------------------------------------	---------------------------	---------------------------------



SC-3, 26 DEC 2024 to 23 JAN 2025

SC-3, 26 DEC 2024 to 23 JAN 2025



CATEGORY		A	B	C	D
<b>C</b> CIRCLING		2440-1¼ 823 (900-1¼)	2440-1¼ 823 (900-1¼)	2440-2½ 823 (900-2½)	NA
HODIS FIX MINIMUMS					
<b>C</b> CIRCLING		2320-1 703 (800-1)	2340-1 723 (800-1)	2380-2¼ 763 (800-2¼)	NA

REIL Rwys 12 and 30 0					
MIRL Rwy 3-21 and 12-30 0					
FAF to MAP 7.2 NM					
Knots	60	90	120	150	180
Min:Sec	7:12	4:48	3:36	2:53	2:24

# VOR-A