

| | | | |
|--|------------------------|-----------------------------|---|
| WAAS CH 42911 W06A | APP CRS 060° | Rwy Idg TDZE Apt Elev | 6406 616 616 |
|--|------------------------|-----------------------------|---|

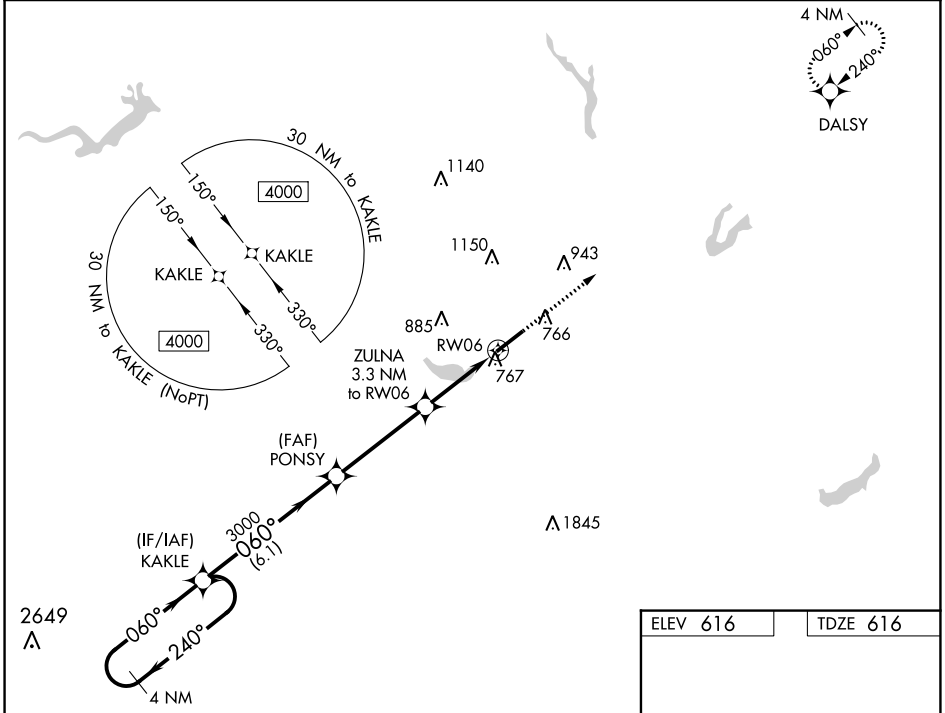
RNAV (GPS) RWY 6

BURLINGTON/ALAMANCE RGNL (BUY)

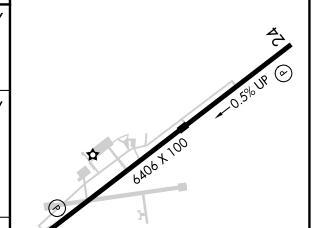
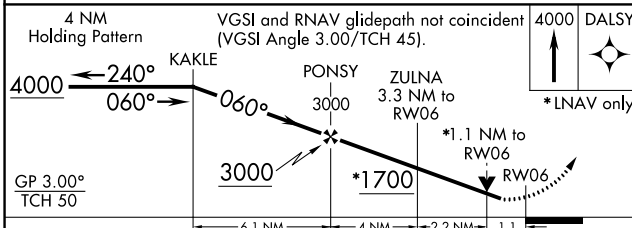
▼ For uncompensated Baro-VNAV systems, LNAV/VNAV NA below -12°C (11°F) or above 54°C (130°F). DME/DME RNP-0.3 NA. When local altimeter setting not received, use Greensboro altimeter setting and increase all DA 97 feet and all MDA 100 feet, increase LPV and LNAV/VNAV visibility 3/8 mile, LNAV Cats C/D and Circling Cat C 1/4 mile. VDP and Baro-VNAV NA when using Greensboro altimeter setting. Helicopter visibility reduction below 3/4 SM NA.

MISSED APPROACH:
Climb to 4000 direct DALSY and hold.

| | | | |
|------------------------|--|---------------------------|--|
| ASOS 135.325 | GREENSBORO APP CON 126.6 327.075 | CLNC DEL 120.25 | UNICOM 122.975 (CTAF) 0 |
|------------------------|--|---------------------------|--|



| | |
|----------|----------|
| ELEV 616 | TDZE 616 |
|----------|----------|



| CATEGORY | A | B | C | D |
|-------------------|--------|-------------|--------------------------------|------------------------|
| LPV DA | | 866-3/4 | 250 (300-3/4) | |
| LNAV/VNAV DA | | 928-1 | 312 (400-1) | |
| LNAV MDA | 1020-1 | 404 (500-1) | 1020-1 1/8 | 404 (500-1 1/8) |
| C CIRCLING | 1100-1 | 484 (500-1) | 1520-2 3/4 904 (1000-2 3/4) | 1520-3 904 (1000-3) |

