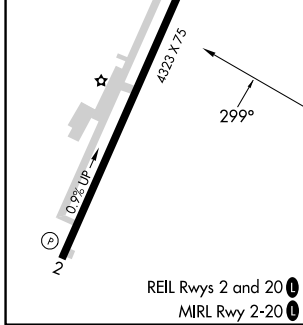
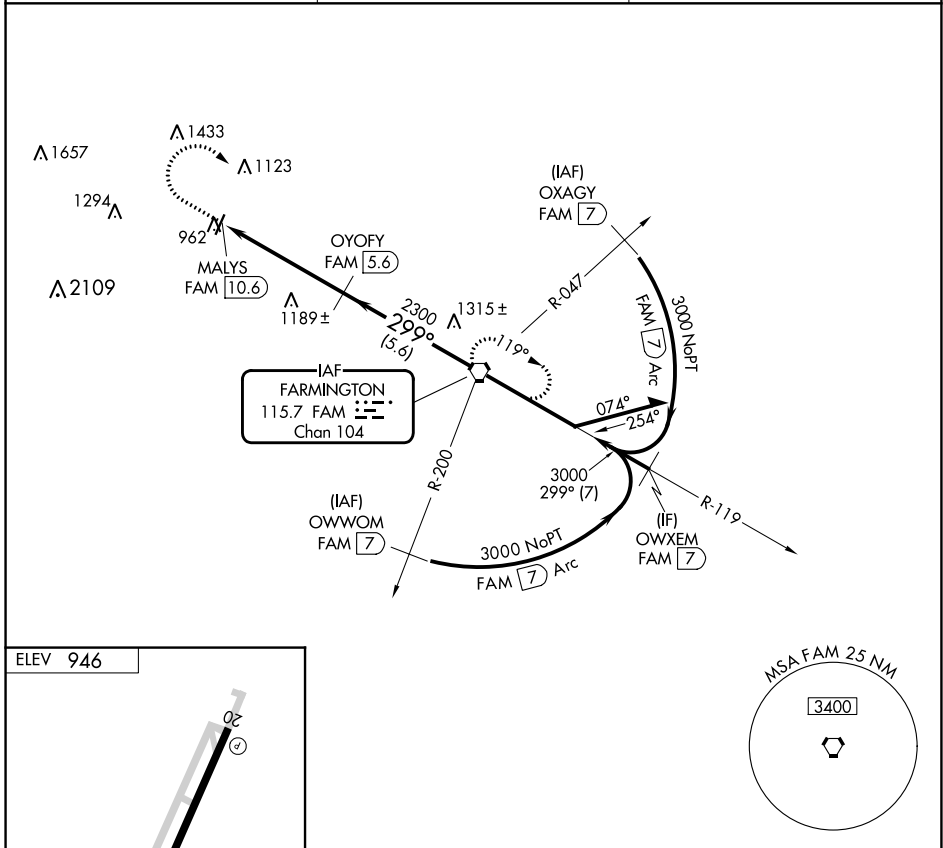


VORTAC FAM 115.7 Chan 104	APP CRS 299°	Rwy Idg TDZE Apt Elev N/A N/A 946
---	------------------------	---

VOR/DME-A
FARMINGTON RGNL (FAM)

<p>NA Circling to Rwy 20 NA at night. When local altimeter setting not received, use Sparta altimeter setting and increase all MDA 160 feet and Cat A visibility ¼ mile.</p>	<p>MISSED APPROACH: Climb to 2200 then climbing right turn to 3000 direct FAM VORTAC and hold.</p>
---	---

<p>AWOS-3PT 119.275</p>	<p>KANSAS CITY CENTER 127.475 346.275</p>	<p>UNICOM 122.8 (CTAF) 0</p>
------------------------------------	--	---



<p>2200 ↑</p>	<p>3000 ↷</p>	<p>FAM </p>	<p>Remain within 10 NM</p>
<p>MALYS FAM 10.6</p>		<p>OYOFY FAM 5.6</p>	<p>FAM VORTAC</p>
<p>2300</p>		<p>3000</p>	<p>119°</p>
<p>5 NM</p>		<p>5.6 NM</p>	<p>299°</p>
<p>CATEGORY</p>	<p>A</p>	<p>B</p>	<p>C D</p>
<p>CIRCLING</p>	<p>1720-1 774 (800-1)</p>	<p>1720-1¼ 774 (800-1¼)</p>	<p>NA</p>

NC-3, 26 DEC 2024 to 23 JAN 2025

NC-3, 26 DEC 2024 to 23 JAN 2025