

VORTAC SPI <b>112.7</b> Chan <b>74</b>	APP CRS <b>041°</b>	Rwy Idg <b>4000</b> TDZE <b>593</b> Apt Elev <b>594</b>
--	------------------------	---

# VOR RWY 3

LOGAN COUNTY (AAA)

DME or RADAR required.

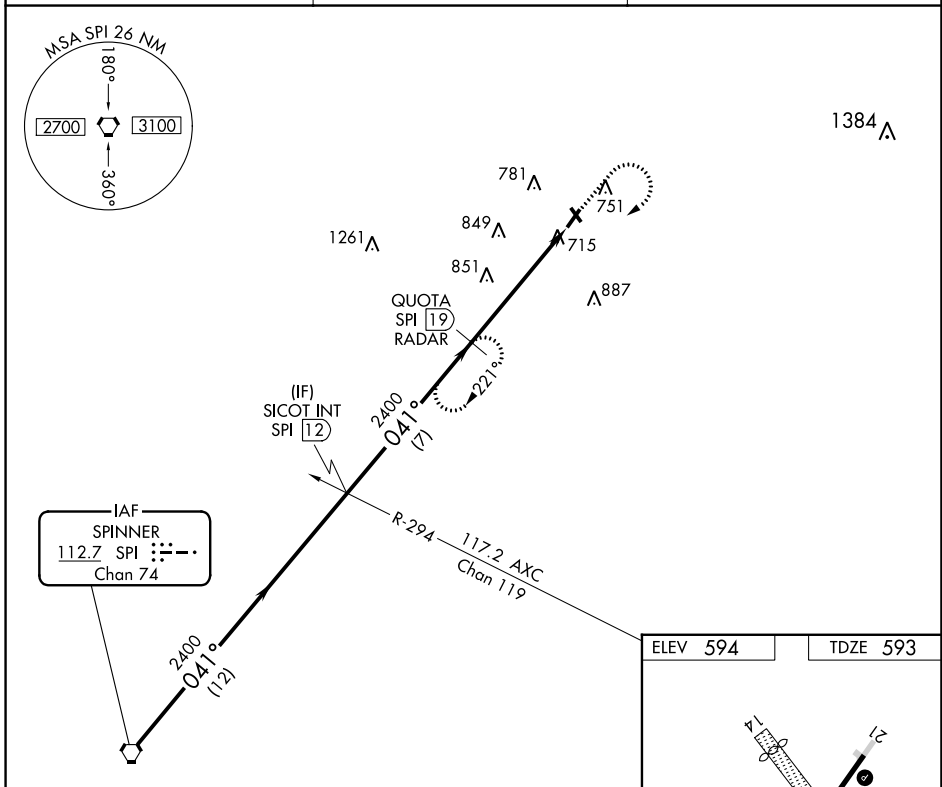
**⚠** When local altimeter setting not received, use Springfield, IL altimeter setting and increase all MDAs 60 feet, increase Circling Cat C/D visibility ¼ SM. Circling NA to Rwy 14 and 32. Rwy 3 helicopter visibility reduction below ¾ SM NA.

MISSED APPROACH: Climb to 2000 then climbing right turn to 2400 via SPI R-041 to QUOTA/19 DME/RADAR and hold.

AWOS-3  
**118.775**

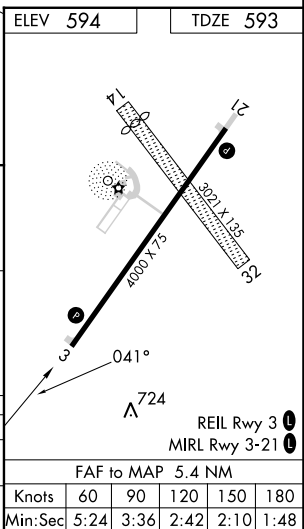
SAINT LOUIS APP CON ★  
**126.15 323.0**

UNICOM  
**122.8 (CTAF) 0**



Procedure Turn NA VGSI and descent angles not coincident (VGSI Angle 3.50/TCH 26).

SPI VORTAC	SICOT INT SPI 12	QUOTA SPI 19 RADAR	2000	2400	QUOTA SPI 19
2400	041°	2400	↑	↘ SPI R-041	
12 NM		7 NM	5.4 NM		
CATEGORY	A	B	C	D	
S-3	1120-1 527 (600-1)	1120-1¼ 527 (600-1¼)	1120-1½ 527 (600-1½)	1120-1¾ 527 (600-1¾)	
CIRCLING	1140-1 546 (600-1)	1140-1¼ 546 (600-1¼)	1280-2 686 (700-2)	1280-2¼ 686 (700-2¼)	



EC-3, 26 DEC 2024 to 23 JAN 2025

EC-3, 26 DEC 2024 to 23 JAN 2025

FAF to MAP 5.4 NM	Knots	60	90	120	150	180
	Min:Sec	5:24	3:36	2:42	2:10	1:48