

WAAS CH <b>53604</b> <b>W36A</b>	APP CRS <b>360°</b>	Rwy Idg <b>5550</b> TDZE <b>326</b> Apt Elev <b>333</b>
--	------------------------	---

# RNAV (GPS) RWY 36

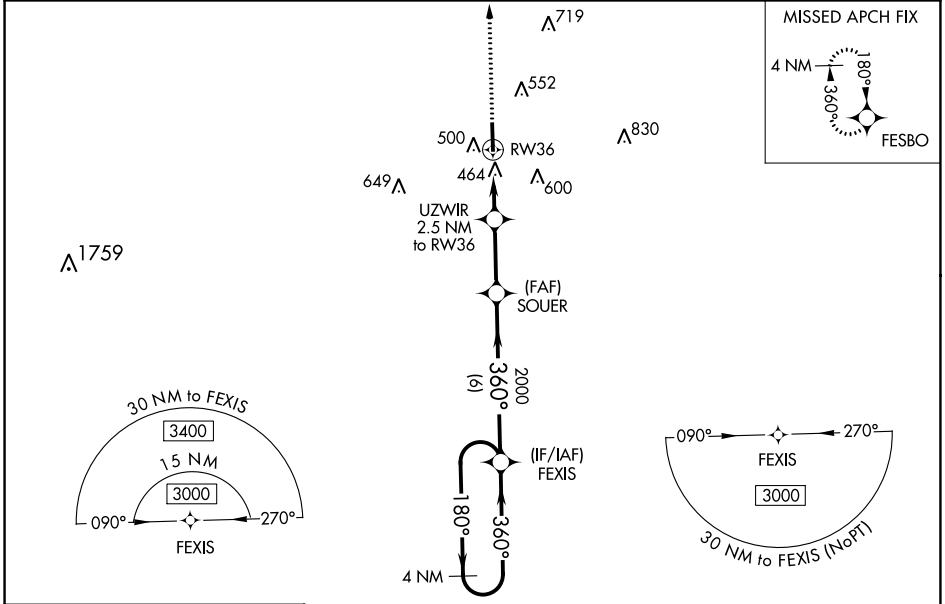
GEORGE M BRYAN (STF)

RNP APCH-GPS.

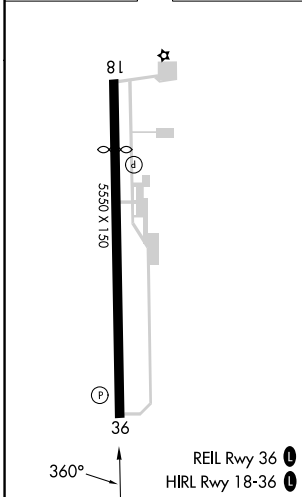
**⚠** For uncompensated Baro-VNAV systems, LNAV/VNAV NA below -15°C or above 54°C .  
**⚠** When local altimeter setting not received, use Golden Triangle Rgnl altimeter setting and increase LPV DA to 566 feet; increase LNAV/VNAV DA to 690 feet; increase all MDAs 40 feet and LNAV visibility Cat C/D 1/8 SM, and Circling visibility Cat C 1/4 SM. Baro-VNAV and VDP NA when using Golden Triangle Rgnl altimeter setting.

**MISSED APPROACH:** Climb to 3400 direct FESBO and hold, continue climb-in-hold to 3400.

AWOS-3PT <b>118.975</b>	COLUMBUS APP CON* <b>135.6 323.275</b>	CLNC DEL <b>126.25</b>	UNICOM <b>122.7 (CTAF)</b>
----------------------------	---	---------------------------	-------------------------------



ELEV <b>333</b>	TDZE <b>326</b>
-----------------	-----------------



3400	FESBO	4 NM Holding Pattern			
*LNAV only.	UZWIR 2.5 NM to RW36	SOUER 2000	FEXIS 3000	GP 3.00° TCH 40	
RW36	*1.1 NM to RW36	*1140	2000	360°	
1.1 NM	1.4 NM	2.7 NM	6 NM		
CATEGORY	A	B	C	D	
LPV DA	526-3/4		200 (200-3/4)		
LNAV/VNAV DA	650-1		324 (400-1)		
LNAV MDA	720-1	394 (400-1)	720-1 1/8	394 (400-1/8)	
<input checked="" type="checkbox"/> CIRCLING	920-1	587 (600-1)	920-1 1/2	1020-2 1/4	687 (700-2 1/4)