

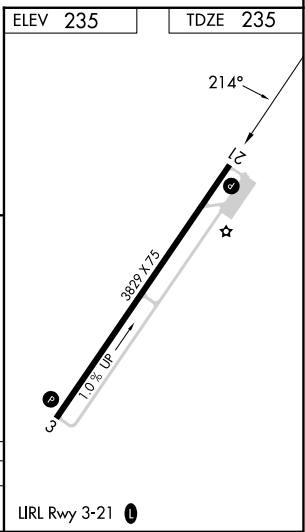
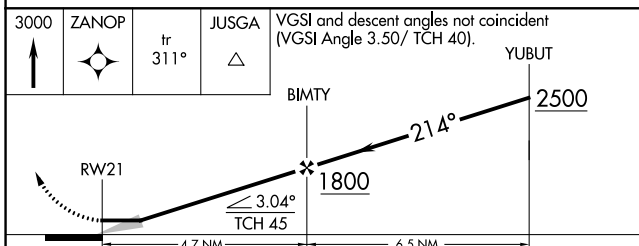
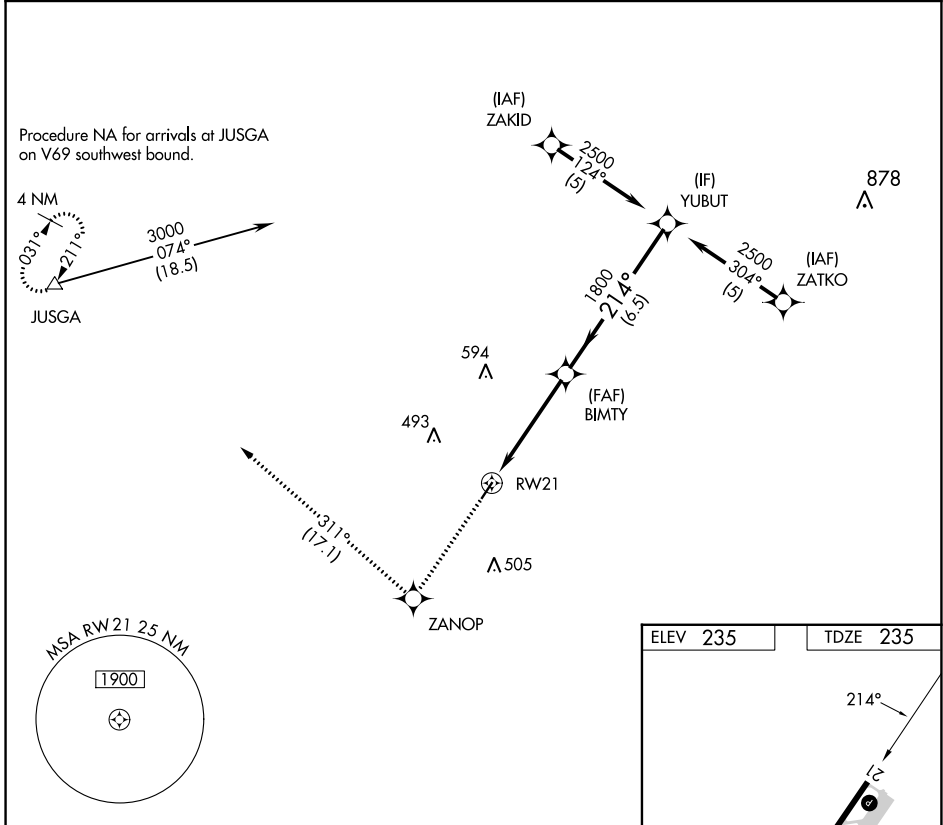
APP CRS	Rwy Idg	<b>3829</b>
<b>214°</b>	TDZE	<b>235</b>
	Apt Elev	<b>235</b>

# RNAV (GPS) RWY 21

WARREN MUNI (3M9)

RNP APCH - GPS.	MISSED APPROACH: Climb to 3000 direct ZANOP and on track 311° to JUSGA and hold.
<p>▼ Use Monticello altimeter setting.</p> <p>▲ NA Procedure NA at night.</p>	

LLQ ASOS <b>133.325</b>	MEMPHIS CENTER <b>135.875 269.35</b>	CTAF <b>122.9 0</b>
----------------------------	---	------------------------



3000	ZANOP	tr 311°	JUSGA	VGSI and descent angles not coincident (VGSI Angle 3.50/ TCH 40).	YUBUT
↑	✧		△		
CATEGORY	A	B	C	D	
LNAV MDA	720-1	485 (500-1)	720-1½ 485 (500-1½)	NA	

SC-1, 26 DEC 2024 to 23 JAN 2025

SC-1, 26 DEC 2024 to 23 JAN 2025