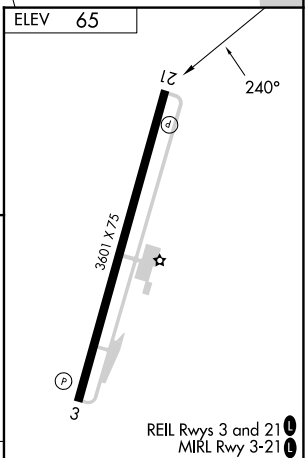
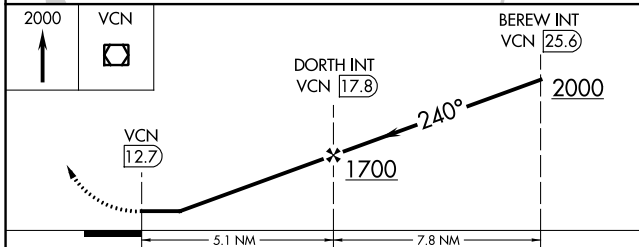
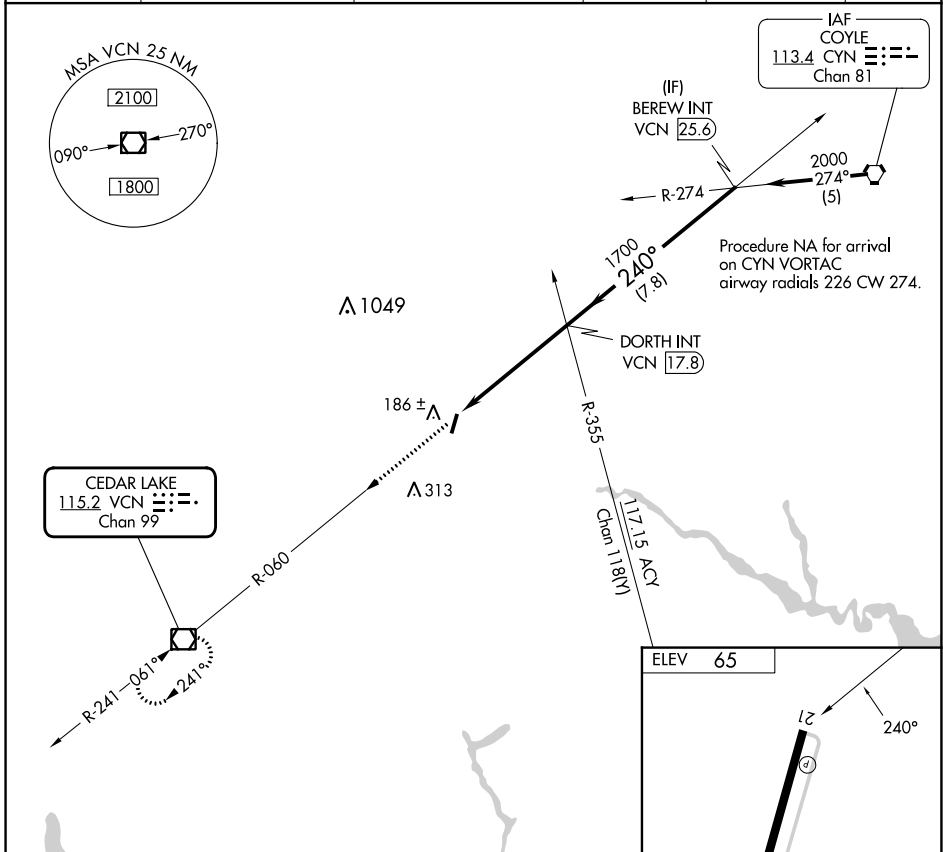


VOR/DME VCN <b>115.2</b> Chan <b>99</b>	APP CRS <b>240°</b>	Rwy Idg TDZE Apt Elev <b>N/A</b> <b>N/A</b> <b>65</b>
---	------------------------	--

**VOR-B**  
HAMMONTON MUNI (N81)

<p><b>▼</b> Procedure NA at night. When local altimeter setting not received, use Atlantic City altimeter setting and increase all MDAs 40 feet.</p> <p><b>▲</b> NA</p>	<p>MISSED APPROACH: Climb to 2000 direct VCN VOR/DME and hold.</p>
---	--

AWOS-AV <b>122.7</b>	ACY ASOS <b>125.725 316.15</b>	ATLANTIC CITY APP CON <b>134.25 292.2</b>	GCO <b>121.725</b>	UNICOM <b>122.7 (CTAF)</b>	<b>123.5 0</b>
-------------------------	-----------------------------------	--	-----------------------	-------------------------------	----------------



CATEGORY	A	B	C	D	FAF to MAP 5.1 NM					
CIRCLING	560-1	495 (500-1)	680-1¾ 615 (700-1¾)	NA	Knots	60	90	120	150	180
					Min:Sec	5:06	3:24	2:33	2:02	1:42

NE-2, 26 DEC 2024 to 23 JAN 2025

NE-2, 26 DEC 2024 to 23 JAN 2025