

RNAV 1 - GPS.
RADAR required.



DENVER APP CON
127.05 363.25
APA ATIS
120.3
BJC ATIS
126.25
FNL ATIS
135.075
CENTENNIAL TOWER
118.9
METRO TOWER *
118.6 233.7

SHRPE

14000
*7300
240°
(53)

PYTNN

14000
*7300
240°
(38)

ELWAY

14000
*7300
238°
(52)

BRNKO
16000
14000



See following page
for arrival routes

NOTE: Jet aircraft only.
NOTE: Aircraft landing Centennial Airport do not file - to be assigned by ATC.
NOTE: GPS required.

NOTE: Chart not to scale.

SHRPE TRANSITION (SHRPE.BRNKO3)

(CONTINUED ON FOLLOWING PAGE)

BRNKO THREE ARRIVAL (RNAV) 16MAY24
(BRNKO.BRNKO3)

Transition Routes

DENVER, COLORADO

(BRNKO.BRNKO3) 24137
BRNKO THREE ARRIVAL (RNAV)

Transition Routes

DENVER, COLORADO

AL-5715 (FAA)

(BRNKO.BRNKO3) 24137

AL-5715 (FAA)

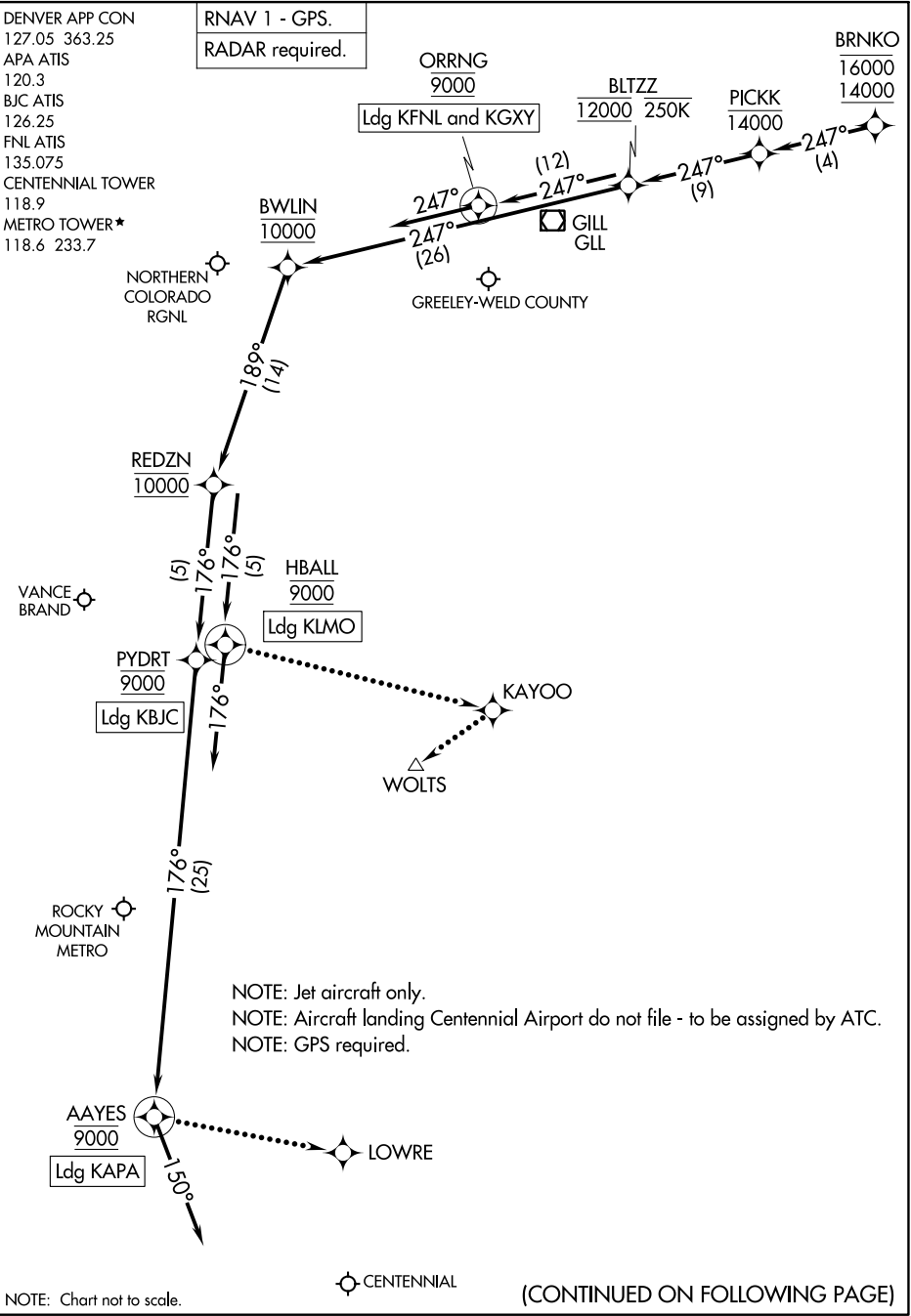
BRNKO THREE ARRIVAL (RNAV) Arrival Routes

DENVER, COLORADO

DENVER APP CON
 127.05 363.25
 APA ATIS
 120.3
 BJC ATIS
 126.25
 FNL ATIS
 135.075
 CENTENNIAL TOWER
 118.9
 METRO TOWER*
 118.6 233.7

RNAV 1 - GPS.
RADAR required.

BRNKO
 16000
 14000



SW-1, 26 DEC 2024 to 23 JAN 2025

SW-1, 26 DEC 2024 to 23 JAN 2025

NOTE: Chart not to scale.



(CONTINUED ON FOLLOWING PAGE)

BRNKO THREE ARRIVAL (RNAV) Arrival Routes

DENVER, COLORADO

(BRNKO.BRNKO3) 16MAY24

ARRIVAL ROUTE DESCRIPTION

LANDING KAPA: From BRNKO on track 247° to cross PICKK at or below 14000, then on track 247° to cross BLTZZ at 12000 and at or below 250K, then on track 247° to cross BWLIN at 10000, then on track 189° to cross REDZN at 10000, then on track 176° to cross PYDRT at 9000, then on track 176° to cross AAYES at 9000, then on track 150°. Expect RADAR vectors to final approach course.

LANDING KBJC: From BRNKO on track 247° to cross PICKK at or below 14000, then on track 247° to cross BLTZZ at 12000 and at or below 250K, then on track 247° to cross BWLIN at 10000, then on track 189° to cross REDZN at 10000, then on track 176° to cross PYDRT at 9000. Expect RNAV (GPS) RWY 12L approach or visual approach as assigned by ATC.

LANDING KFNL/KGXY: From BRNKO on track 247° to cross PICKK at or below 14000, then on track 247° to cross BLTZZ at 12000 and at or below 250K, then on track 247° to cross ORRNG at 9000, then on track 247°. Expect RADAR vectors to final approach course.

LANDING KLMO: From BRNKO on track 247° to cross PICKK at or below 14000, then on track 247° to cross BLTZZ at 12000 and at or below 250K, then on track 247° to cross BWLIN at 10000, then on track 189° to cross REDZN at 10000, then on track 176° to cross HBALL at 9000, then on track 176°. Expect RADAR vectors to final approach course.

LOST COMMUNICATIONS

LANDING KAPA: From AAYES direct LOWRE and execute RNAV (GPS) RWY 17L approach.

LANDING KBJC: From PYDRT execute RNAV (GPS) RWY 12L approach.

LANDING KLMO: From HBALL direct KAYOO direct WOLTS and execute RNAV (GPS) RWY 29 approach.

LANDING KFNL/KGXY: Proceed to GLL VOR/DME, execute approach.

SW-1, 26 DEC 2024 to 23 JAN 2025

SW-1, 26 DEC 2024 to 23 JAN 2025