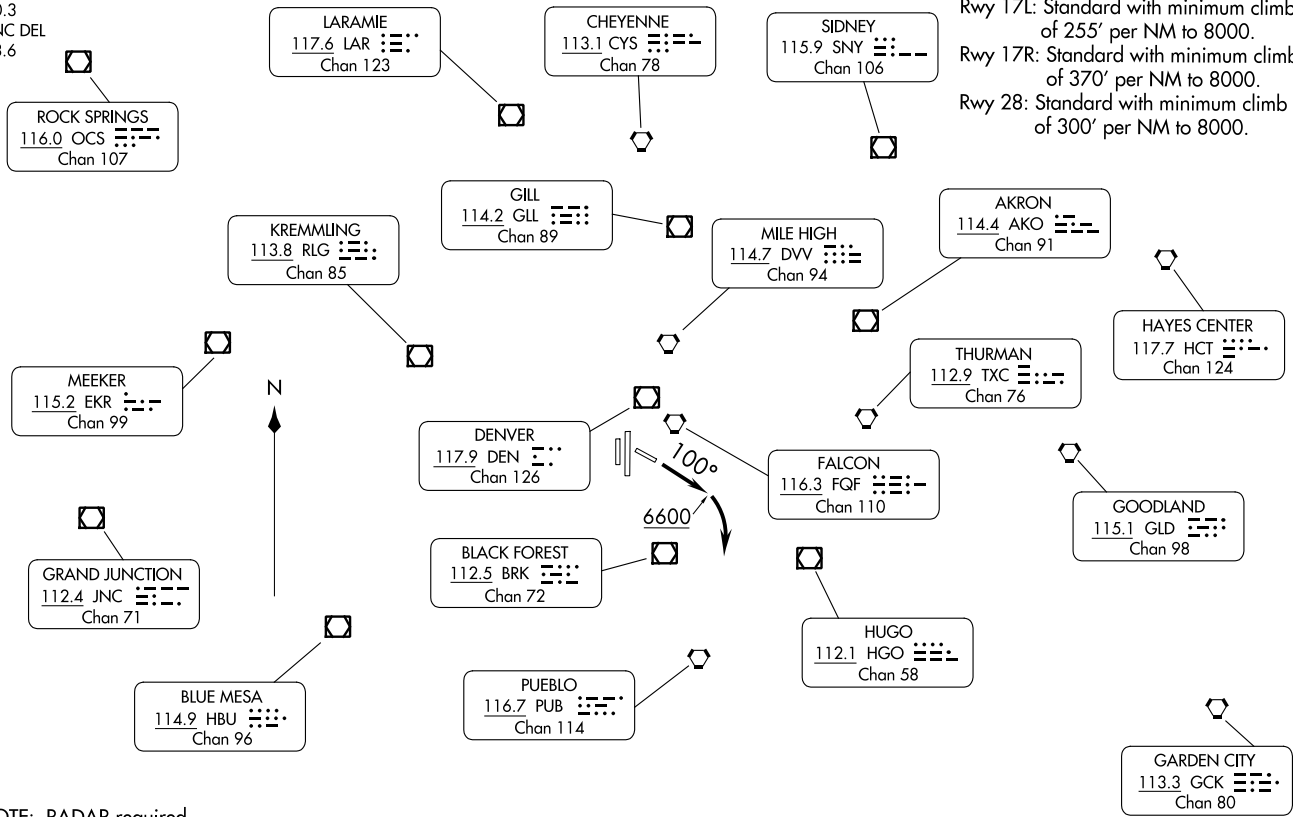


**TOP ALTITUDE: ASSIGNED BY ATC**

**TAKEOFF MINIMUMS:**  
 Rwys 10, 35L/R: Standard.  
 Rwy 17L: Standard with minimum climb of 255' per NM to 8000.  
 Rwy 17R: Standard with minimum climb of 370' per NM to 8000.  
 Rwy 28: Standard with minimum climb of 300' per NM to 8000.

DENVER DEP CON  
 132.75 269.3  
 ATIS  
 120.3  
 CLNC DEL  
 128.6



(CONTINUED ON FOLLOWING PAGE)

NOTE: RADAR required.  
 NOTE: Chart not to scale.



DEPARTURE ROUTE DESCRIPTION

TAKEOFF ALL RUNWAYS: Fly assigned heading and altitude for RADAR vectors to assigned route. Expect filed altitude 10 minutes after departure.

RUNWAY 10: Climb heading 100° to 6600 before turning right.

LOST COMMUNICATIONS: If no transmissions are received within one minute after departure, maintain assigned heading until 7000 feet, then climb to filed altitude via direct DEN VOR/DME, thence via assigned route. If filed altitude is above 10000 feet, cross DEN VOR/DME at or above 11000 feet.

SW-1, 26 DEC 2024 to 23 JAN 2025

SW-1, 26 DEC 2024 to 23 JAN 2025