

(ECHO01.ECHOO) 26MAR20

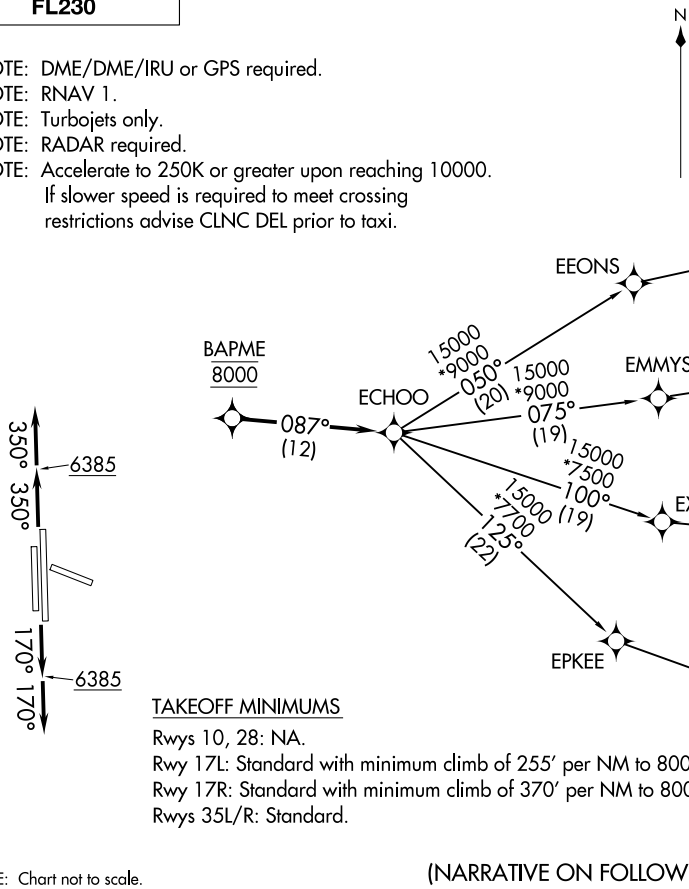
ECHOO ONE DEPARTURE (RNAV)

DENVER, COLORADO  
CENTENNIAL (A/P)

**TOP ALTITUDE:  
FL230**

- NOTE: DME/DME/IRU or GPS required.
- NOTE: RNAV 1.
- NOTE: Turbojets only.
- NOTE: RADAR required.
- NOTE: Accelerate to 250K or greater upon reaching 10000.  
If slower speed is required to meet crossing restrictions advise CLNC DEL prior to taxi.

ATIS 120.3  
CLNC DEL 128.6  
DENVER DEP CON 132.75 269.3



TAKEOFF MINIMUMS

- Rwys 10, 28: NA.
- Rwy 17L: Standard with minimum climb of 255' per NM to 8000.
- Rwy 17R: Standard with minimum climb of 370' per NM to 8000.
- Rwys 35L/R: Standard.

NOTE: Chart not to scale.

(NARRATIVE ON FOLLOWING PAGE)

(ECHO01.ECHOO) 20086

ECHOO ONE DEPARTURE (RNAV)

AL-5715 (FAA)

CENTENNIAL (A/P)  
DENVER, COLORADO



DEPARTURE ROUTE DESCRIPTION

TAKEOFF RUNWAYS 17L/R: Climb on heading 170° to 6385, then on heading 170° or as assigned by ATC. Thence. . . .

TAKEOFF RUNWAYS 35L/R: Climb on heading 350° to 6385, then on heading 350° or as assigned by ATC. Thence. . . .

. . . .expect RADAR vectors to cross BAPME at 8000 then on track 087° to ECHOO, then on (transition) maintain FL230 or filed lower altitude. Expect higher filed altitude ten minutes after departure.

DUUZE TRANSITION (ECHOO1.DUUZE)

SHAYK TRANSITION (ECHOO1.SHAYK)

WYNDM TRANSITION (ECHOO1.WYNDM)

ZIRKL TRANSITION (ECHOO1.ZIRKL)

SW-1, 26 DEC 2024 to 23 JAN 2025

SW-1, 26 DEC 2024 to 23 JAN 2025