

LOC/DME I-APA <b>111.3</b> Chan <b>50</b>	APP CRS <b>350°</b>	Rwy Idg <b>35R</b> TDZE <b>5885</b> Apt Elev <b>5885</b>	<b>35L</b> <b>7001</b> <b>5869</b> <b>5885</b>
---	------------------------	--	---

# ILS or LOC RWY 35R

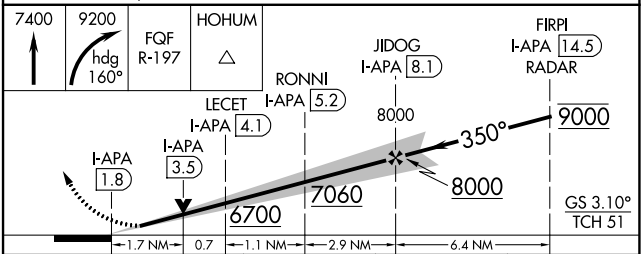
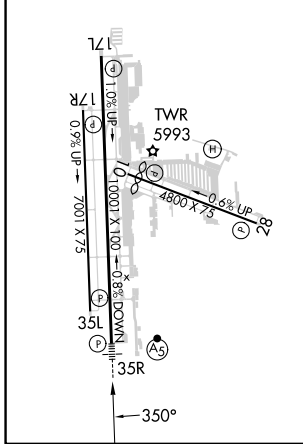
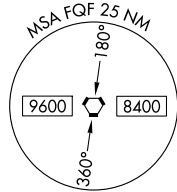
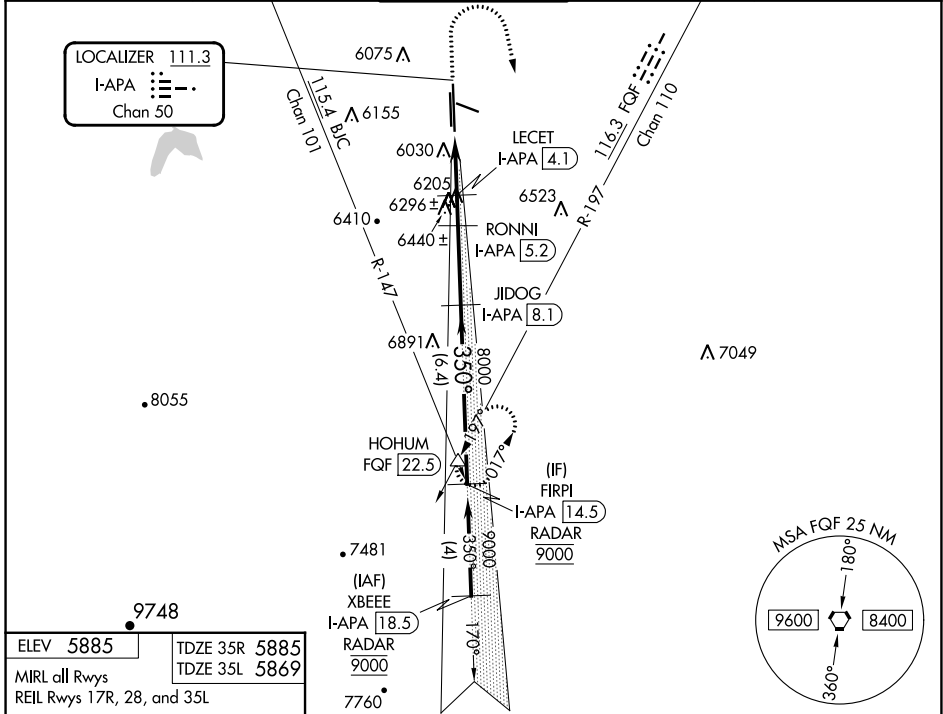
CENTENNIAL (APA)

DME required for LOC only. RADAR required for procedure entry.

**▼** Rwy 35L helicopter visibility reduction below 1 SM NA. For inop ALS, increase S-LOC 35R Cat C/D visibility to 1½ SM. Sidestep and Circling Rwy 35L NA at night.

**⚠** MISSED APPROACH: Climb to 7400 then climbing right turn to 9200 on heading 160° and FQF VORTAC R-197 to HOHUM INT/FQF 22.5 DME and hold.

ATIS <b>120.3</b>	DENVER APP CON <b>132.75 269.3</b>	<b>CENTENNIAL TOWER</b> <b>118.9</b>	GND CON <b>121.8</b>	CLNC DEL <b>128.6</b>
----------------------	---------------------------------------	---	-------------------------	--------------------------



CATEGORY	A	B	C	D
S-ILS 35R	6085-½ 200 (200-½)			
S-LOC 35R	6460-½ 575 (600-½)	6460-1¼ 575 (600-1¼)		
SIDESTEP 35L	6460-1 591 (600-1)	6460-1½ 591 (600-1½)	6460-2 591 (600-2)	
<b>C</b> CIRCLING	6460-1 575 (600-1)	6540-1 655 (700-1)	6740-2½ 855 (900-2½)	6760-2¾ 875 (900-2¾)

SW-1, 26 DEC 2024 to 23 JAN 2025

SW-1, 26 DEC 2024 to 23 JAN 2025