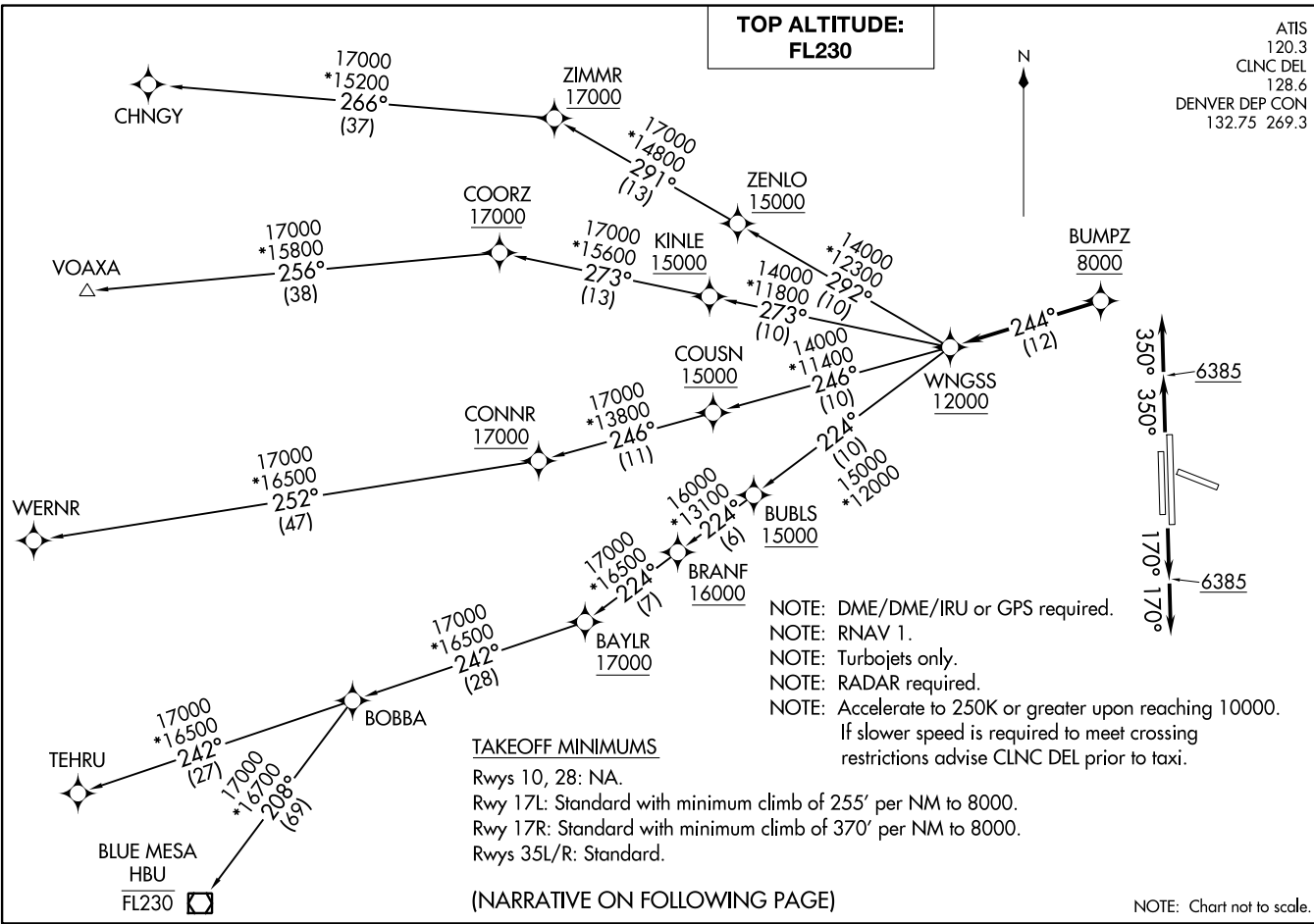


WNGSS ONE DEPARTURE (RNAV)  
(WNGSS1.WNGSS) 26MAR20

DENVER, COLORADO  
CENTENNIAL (A/P)



(WNGSS1.WNGSS) 20086  
WNGSS ONE DEPARTURE (RNAV)

AL-5715 (FAA)

CENTENNIAL (A/P)  
DENVER, COLORADO



DEPARTURE ROUTE DESCRIPTION

TAKEOFF RUNWAYS 17L/R: Climb on heading 170° to 6385, then on heading 170° or as assigned by ATC. Thence. . . .

TAKEOFF RUNWAYS 35L/R: Climb on heading 350° to 6385, then on heading 350° or as assigned by ATC. Thence. . . .

. . . .expect RADAR vectors to cross BUMPZ at 8000 then on track 244° to cross WNGSS at or above 12000 then on (transition) maintain FL230 or filed lower altitude. Expect higher filed altitude ten minutes after departure.

BLUE MESA TRANSITION (WNGSS1.HBU)

CHNGY TRANSITION (WNGSS1.CHNGY)

TEHRU TRANSITION (WNGSS1.TEHRU)

VOAXA TRANSITION (WNGSS1.VOAXA)

WERNR TRANSITION (WNGSS1.WERNR)

SW-1, 26 DEC 2024 to 23 JAN 2025

SW-1, 26 DEC 2024 to 23 JAN 2025