

WAAS CH 90236 W26A	APP CRS 257°	Rwy Idg TDZE Apt Elev	5002 20 23
--	------------------------	-----------------------------	---------------------------------------

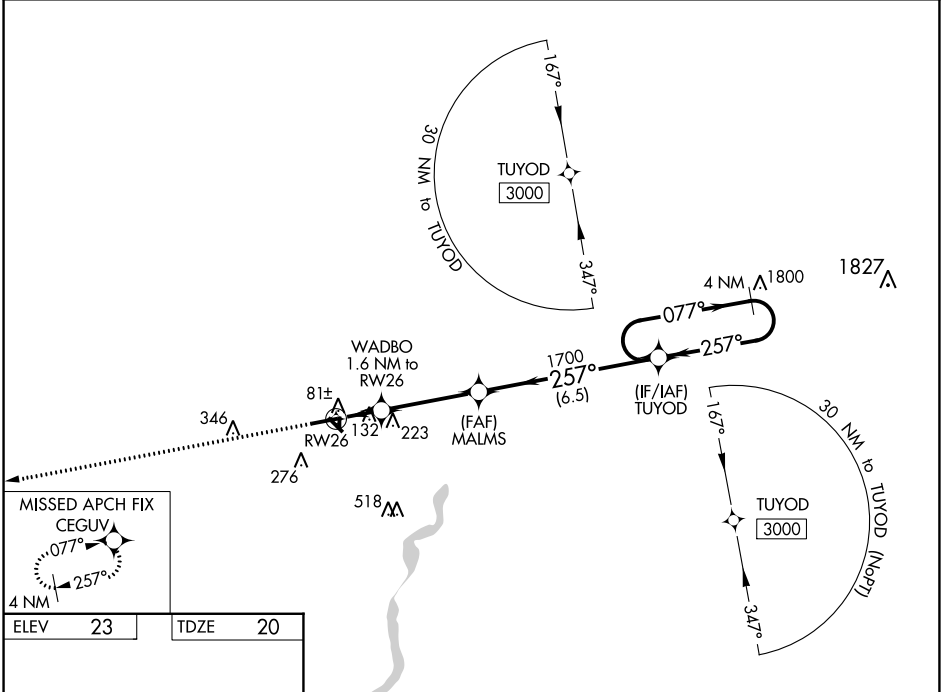
RNAV (GPS) RWY 26

JENNINGS (3R7)

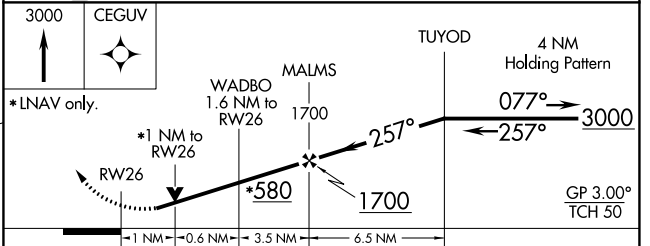
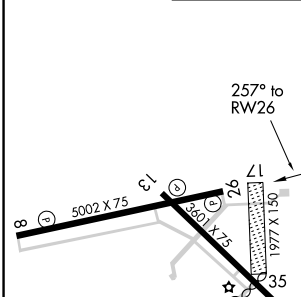
▼ For uncompensated Baro-VNAV systems, LNAV/VNAV NA below -15°C (5°F) or above 54°C (130°F).
 ▲ DME/DME RNP-0.3 NA. Baro-VNAV and VDP NA when using Lake Charles Rgnl altimeter setting.
 ▲ Night landing: Rwy 8, 31 NA. Helicopter visibility reduction below ¾ SM NA. When local altimeter setting not received, use Lake Charles Rgnl altimeter setting: Increase all DA 69 ft and all MDA 80 ft; increase LPV and LNAV/VNAV all Cats visibility ¼ mile, increase LNAV/Circling Cat C visibility ½ mile.

MISSED APPROACH:
Climb to 3000 direct CEGUV and hold.

AWOS-3PT 121.150	LAKE CHARLES APP CON ★ 119.8 282.3	UNICOM 122.8 (CTAF) 0
----------------------------	--	--



ELEV 23	TDZE 20
---------	---------



CATEGORY	A	B	C	D
LPV DA	290-7/8	270 (300-7/8)		NA
LNAV/VNAV DA	300-7/8	280 (300-7/8)		NA
LNAV MDA	400-1	380 (400-1)		NA
C CIRCLING	580-1	557 (600-1)	680-13/4 657 (700-13/4)	NA

REIL Rwy 8, 26, 13, and 31
 MIRL Rwy 8-26 and 13-31 **0**

SC-4, 26 DEC 2024 to 23 JAN 2025

SC-4, 26 DEC 2024 to 23 JAN 2025