

WAAS CH 90436 W08A	APP CRS 077°	Rwy Idg 5002 TDZE 17 Apt Elev 23
----------------------------------------	------------------------	-------------------------------------------------------------

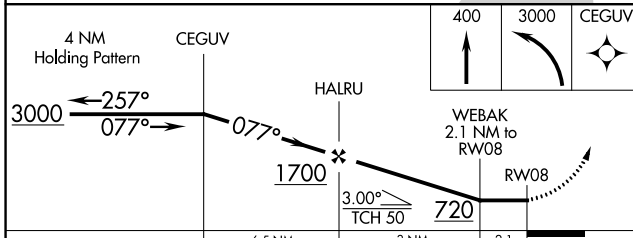
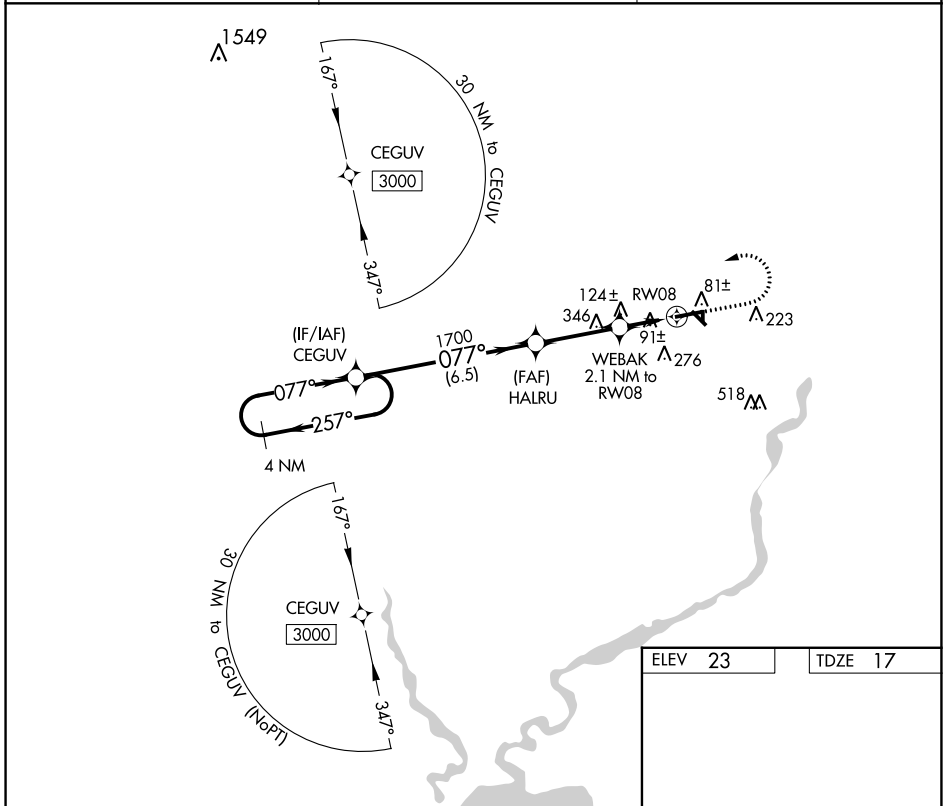
RNAV (GPS) RWY 8

JENNINGS (3R7)

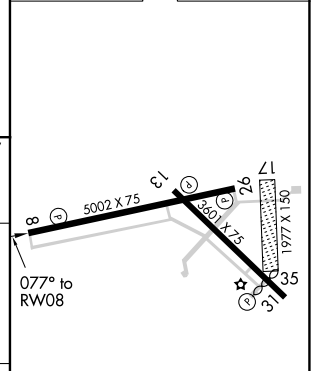
⚠ DME/DME RNP-0.3 NA. Night landing: Rwy 08, 31 NA. Helicopter visibility reduction below 1 SM NA. When local altimeter setting not received, use Lake Charles Rgnl altimeter setting: Increase all MDA 80 ft, LP Cat C visibility ¼ mile, LNAV Cat C visibility ⅜ mile, and Circling Cat C visibility ¼ mile.

⚠ MISSED APPROACH: Climb to 400 then climbing left turn to 3000 direct CEGUV and hold.

AWOS-3PT 121.150	LAKE CHARLES APP CON* 119.8 282.3	UNICOM 122.8 (CTAF) 0
----------------------------	---------------------------------------------	---------------------------------



ELEV 23	TDZE 17
---------	---------



CATEGORY	A	B	C	D
LP MDA	360-1	343 (400-1)		NA
LNAV MDA	380-1	363 (400-1)		NA
CIRCLING	580-1	557 (600-1)	680-1¾ 657 (700-1¾)	NA

REIL Rwy 8, 26, 13, and 31
MIRL Rwy 8-26 and 13-31 **0**

SC-4, 26 DEC 2024 to 23 JAN 2025

SC-4, 26 DEC 2024 to 23 JAN 2025