

WAAS CH 40320 W24A	APP CRS 238°	Rwy Idg TDZE Apt Elev	5399 9 9
--	------------------------	-----------------------------	-------------------------------------

RNAV (GPS) RWY 24

HARRY P WILLIAMS MEML (PTN)

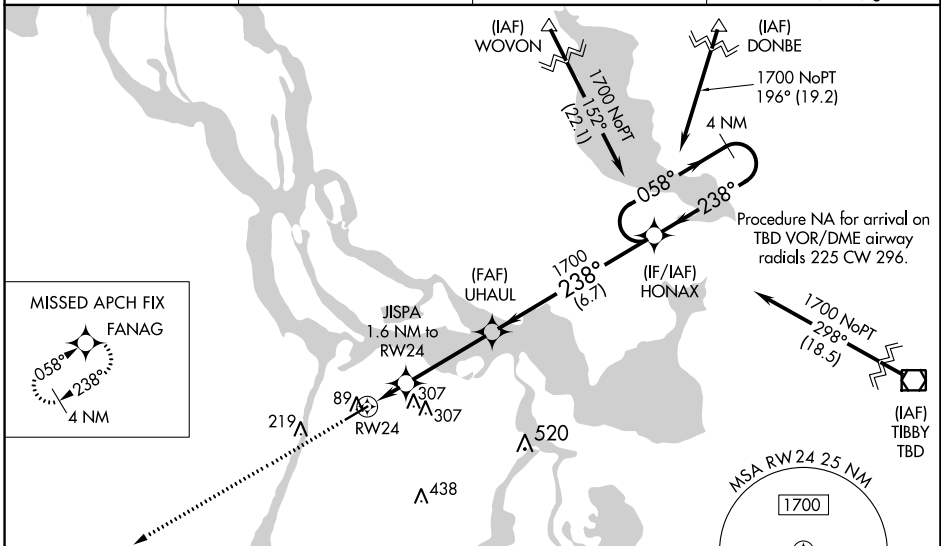
RNP APCH.

▼ For uncompensated Baro-VNAV systems, LNAV/VNAV NA below -15°C or above 54°C.
 ▲ Circling NA to Rwy 4W and 22W. Baro-VNAV and VDP NA when using New Iberia altimeter setting. When local altimeter setting not received, use New Iberia altimeter setting: increase LPV DA to 291 feet; increase LNAV/VNAV DA to 341 feet and visibility all Cats ½ SM; increase all MDAs 100 feet and LNAV Cat C visibility ¼ SM and Circling Cat C visibility ½ SM. For inop MALSRS, increase LNAV Cat C visibility to 1 mile. For inop MALSRS, when using New Iberia altimeter setting, increase LPV all Cats visibility to ¾ mile, LNAV/VNAV all Cats visibility to 1 ½ mile, and LNAV Cat C visibility to 1 ¾ mile. When VGSI inop, Circling Rwy 6 NA at night.

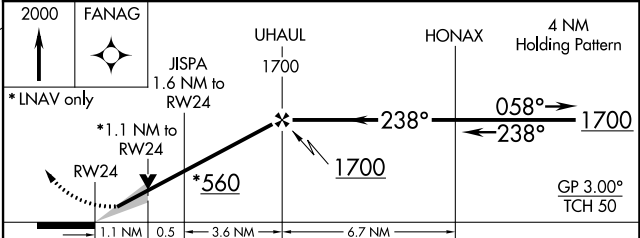
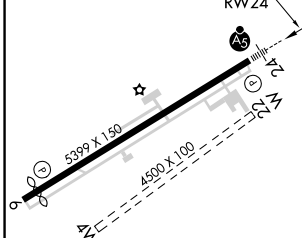


MISSED APPROACH:
Climb to 2000 direct FANAG and hold.

AWOS-3PT 134.575	NEW ORLEANS APP CON 124.3 350.35	CLNC DEL 124.3	UNICOM 122.8 (CTAF)
----------------------------	--	--------------------------	-------------------------------



ELEV 9	TDZE 9
---------------	---------------



CATEGORY	A	B	C	D
LPV DA		209-½	200 (200-½)	NA
LNAV/VNAV DA		259-½	250 (300-½)	NA
LNAV MDA	400-½	391 (400-½)	400-5/8 391 (400-5/8)	NA
CIRCLING	520-1 511 (600-1)	660-1 651 (700-1)	660-1 ¾ 651 (700-1 ¾)	NA

SC-4, 26 DEC 2024 to 23 JAN 2025

SC-4, 26 DEC 2024 to 23 JAN 2025