

WAAS CH 70604 W07A	APP CRS 069°	Rwy Idg TDZE Apt Elev	5100 1318 1318
--	------------------------	-----------------------------	---

RNAV (GPS) RWY 7

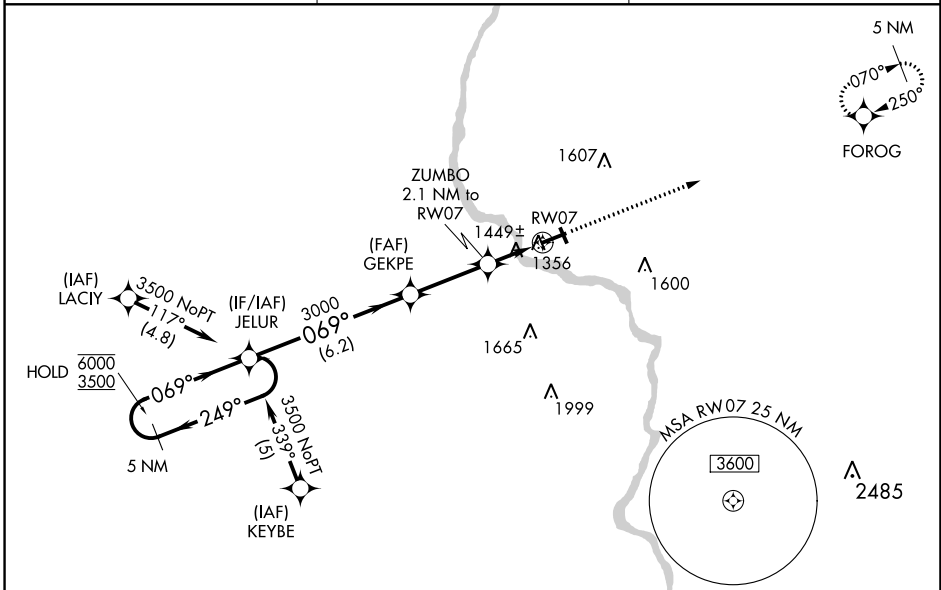
MERRILL MUNI (R.R.L.)

RNP APCH - GPS.

▼ Circling Rwy 16, 34 NA at night. Rwy 7 helicopter visibility reduction below 3/4 SM NA.
▲ For uncompensated Baro-VNAV systems, LNAV/VNAV NA below -17°C or above 54°C.

MISSED APPROACH: Climb to 3500 direct FOROG and hold.

AWOS-3 119.925	MINNEAPOLIS CENTER 124.4 317.7	UNICOM 122.8 (CTAF) 0
--------------------------	--	---------------------------------



EC-3, 26 DEC 2024 to 23 JAN 2025

EC-3, 26 DEC 2024 to 23 JAN 2025

5 NM Holding Pattern		VGSI and RNAV glidepath not coincident (VGSI Angle 3.00/TCH 40).		3500	FOROG
<p>6000 ← 249°</p> <p>3500 → 069°</p> <p>GP 3.00° TCH 40</p>		JELUR	GEKPE	ZUMBO	RW07
		6.2 NM	3 NM	1 NM	1.1 NM
CATEGORY	A	B	C	D	
LPV DA	1635-1	317 (400-1)		NA	
LNAV/VNAV DA	1754-1¼	436 (500-1¼)		NA	
LNAV MDA	1700-1	382 (400-1)	1700-1⅛ 382 (400-1⅛)	NA	
C CIRCLING	1760-1 442 (500-1)	1780-1 462 (500-1)	1920-1¾ 602 (700-1¾)	NA	

