

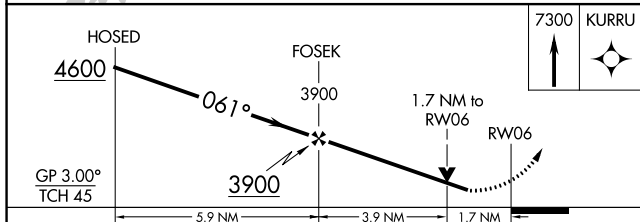
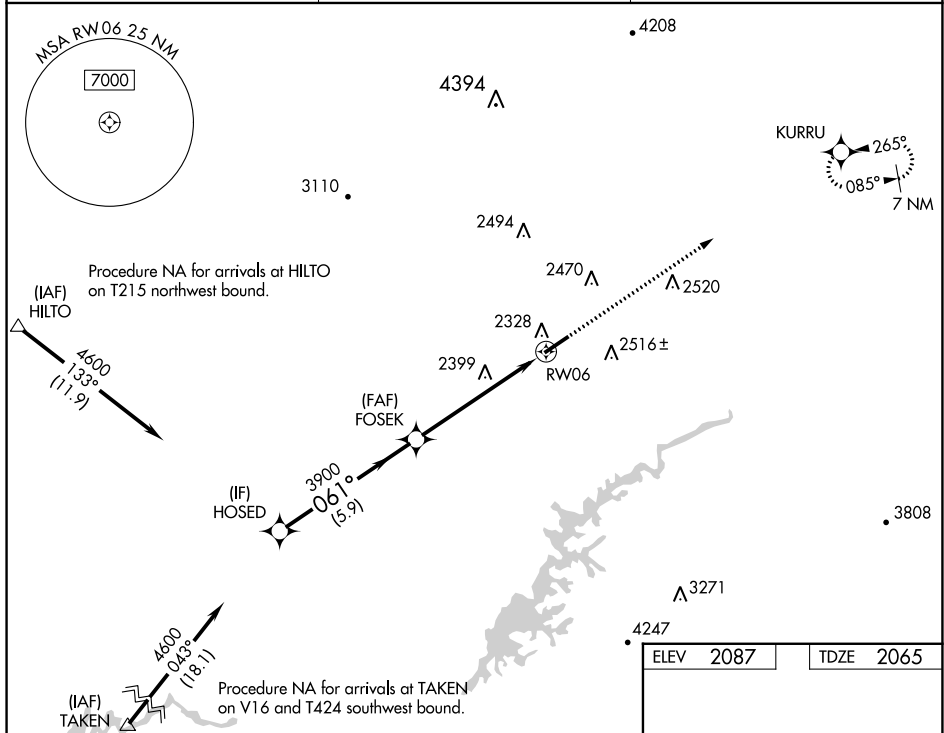
WAAS CH <b>82411</b> <b>W06A</b>	APP CRS <b>061°</b>	Rwy Idg TDZE Apt Elev <b>5500</b> <b>2065</b> <b>2087</b>
--	------------------------	--

# RNAV (GPS) RWY 6

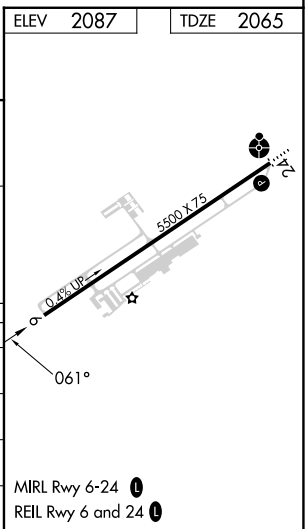
VIRGINIA HIGHLANDS (VJI)

RNP APCH - GPS.	MISSED APPROACH: Climb to 7300 direct KURRU and hold, continue climb-in-hold to 7300.
<p>▼ Rwy 6 helicopter visibility reduction below 3/4 SM NA. For uncompensated Baro-VNAV systems, LNAV/VNAV NA below -19°C or above 54°C.</p> <p>▲</p>	

AWOS-3 <b>128.125</b>	TRI CITY APP CON * <b>125.25 349.0</b>	UNICOM <b>122.8 (CTAF) 0</b>
--------------------------	---	---------------------------------



CATEGORY	A	B	C	D
LPV DA	2456-1 1/8 391 (400-1 1/8)			
LNAV/VNAV DA	2528-1 3/8 463 (500-1 3/8)			
LNAV MDA	2660-1 595 (600-1)	2660-1 3/4 595 (600-1 3/4)		
CIRCLING	2860-1 773 (800-1)	2860-2 1/4 773 (800-2 1/4)	3080-3 993 (1000-3)	



NE-3, 26 DEC 2024 to 23 JAN 2025

NE-3, 26 DEC 2024 to 23 JAN 2025