

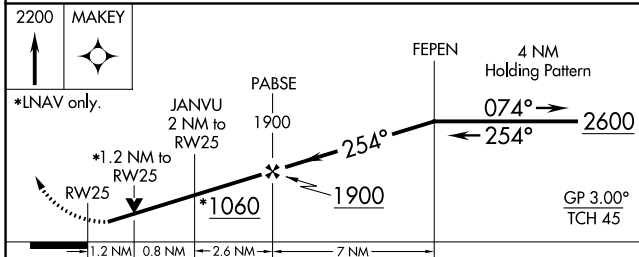
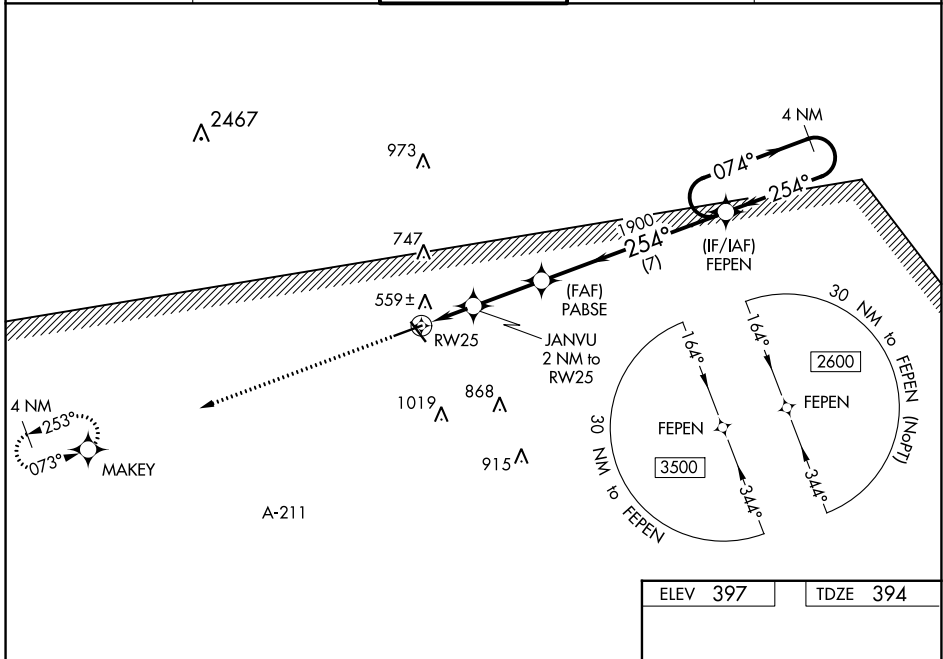
WAAS CH 50137 W25A	APP CRS 254°	Rwy Idg TDZE Apt Elev	6197 394 397
--	------------------------	-----------------------------	---

RNAV (GPS) RWY 25

TROY MUNI AT N KENNETH CAMPBELL FLD (TOI)

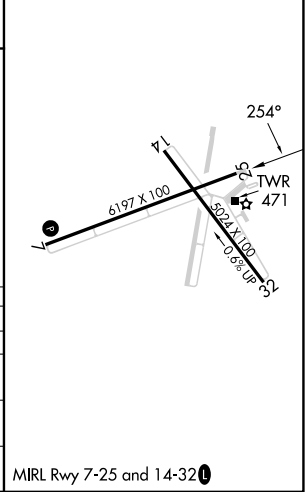
RNP APCH.	<p>For uncompensated Baro-VNAV systems, LNAV/VNAV NA below -7°C (20°F) or above 54°C (130°F). Baro-VNAV and VDP NA when using Montgomery Rgnl (Dannelly Fld) altimeter setting. Rwy 25 helicopter visibility reduction below ¼ SM NA. Circling to Rwy 14, 32 NA at night. When local altimeter setting not received, use Montgomery Rgnl (Dannelly Fld) altimeter setting and increase LPV DA to 747 and all visibilities ¼ SM, LNAV/VNAV DA to 840 and visibilities ⅓ SM, and all MDA 100 feet; increase LNAV Cats C and D and Circling Cat C visibility ¼ SM.</p>	MISSED APPROACH: Climb to 2200 direct MAKEY and hold.
-----------	---	---

ATIS 120.925	CAIRNS APP CON ★ 121.1 319.25	TROY TOWER ★ 124.3 (CTAF) 0 306.9	GND CON 121.9 294.7	UNICOM 122.8
------------------------	---	---	-------------------------------	------------------------



ELEV 397	TDZE 394
----------	----------

CATEGORY	A	B	C	D
LPV DA		647-7/8	253 (300-7/8)	
LNAV/VNAV DA		740-1 1/8	346 (400-1 1/8)	
LNAV MDA	820-1	426 (500-1)	820-1 1/4	426 (500-1 1/4)
CIRCLING	1000-1	603 (700-1)	1300-2 3/4 903 (1000-2 3/4)	1380-3 983 (1000-3)



RNAV (GPS) RWY 25

SE-4, 26 DEC 2024 to 23 JAN 2025

SE-4, 26 DEC 2024 to 23 JAN 2025