

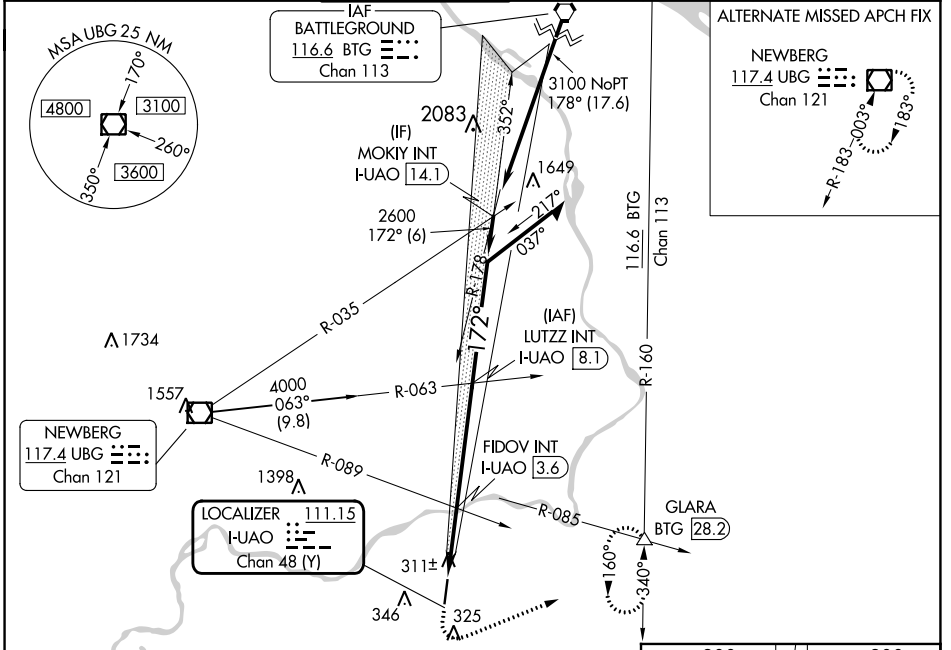
LOC/DME I-UAO 111.15 Chan 48 (Y)	APP CRS 172°	Rwy Idg TDZE Apt Elev 5003 200 200
--	------------------------	--

LOC RWY 17

AURORA STATE (UAO)

▼ Rwy 17 helicopter visibility reduction below 3/4 SM NA.
 ▲ FIDOV fix minimums: Inop table does not apply to Cats C/D.
 For inop ALS, increase S-17 Cats C/D visibility to 2 1/2 SM.

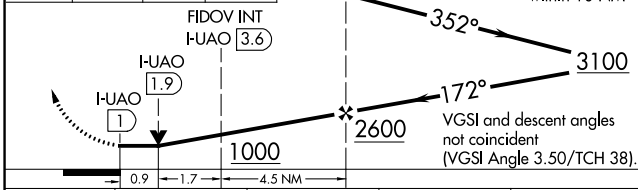
ATIS ★ 118.525	PORTLAND APP CON 126.0 269.175	AURORA TOWER ★ 120.35 (CTAF) 0	GND CON 119.15	CLNC DEL 119.15	PORTLAND CLNC DEL 119.95 (When tower closed)
--------------------------	--	---	--------------------------	---------------------------	---



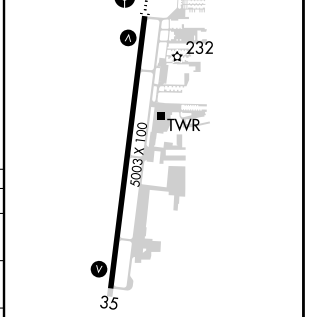
ALTERNATE MISSED APCH FIX

NEWBERG
117.4 UBG
Chan 121

900	4000	BTG	GLARA	LUTZZ INT I-UAO [8.1]	Remain within 10 NM
↑	hdg 050°	R-160	△		



ELEV 200	TDZE 200
----------	----------



CATEGORY	A	B	C	D
S-17	1000-3/4 800 (800-3/4)	1000-1 800 (800-1)	1000-2	800 (800-2)
CIRCLING	1000-1 800 (800-1)	1000-1 1/4 800 (800-1 1/4)	1000-2 1/2	800 (800-2 1/2)
FIDOV FIX MINIMUMS				
S-17	580-3/4 380 (400-3/4)		580-1 380 (400-1)	
CIRCLING	700-1 500 (500-1)		700-1 1/2 940-2 1/4 500 (500-1 1/2) 740 (800-2 1/4)	

MIRL Rwy 17-35 0	FAF to MAP 7.1 NM					
	Knots	60	90	120	150	180
	Min:Sec	7:06	4:44	3:33	2:50	2:22

NW-1, 26 DEC 2024 to 23 JAN 2025

NW-1, 26 DEC 2024 to 23 JAN 2025