

KERMIT FOUR DEPARTURE

(KER4.KER) 24081

CHARLOTTE/MONROE EXEC (EQY)

AL-5726 (FAA)

MONROE, NORTH CAROLINA

CHARLOTTE DEP CON
120.05 307.8
ASOS
135.775
CLNC DEL
132.55
UNICOM
122.7

RADAR and DME required.

**TOP ALTITUDE:
3000**

TAKEOFF MINIMUMS
Rwys 5, 23: Standard.

PULASKI
116.8 PSK
Chan 115

BARRETT'S MOUNTAIN
113.75 BZM
Chan 84(Y)

SUGARLOAF MOUNTAIN
112.2 SUG
Chan 59

CHARLOTTE
115.0 CLT
Chan 97

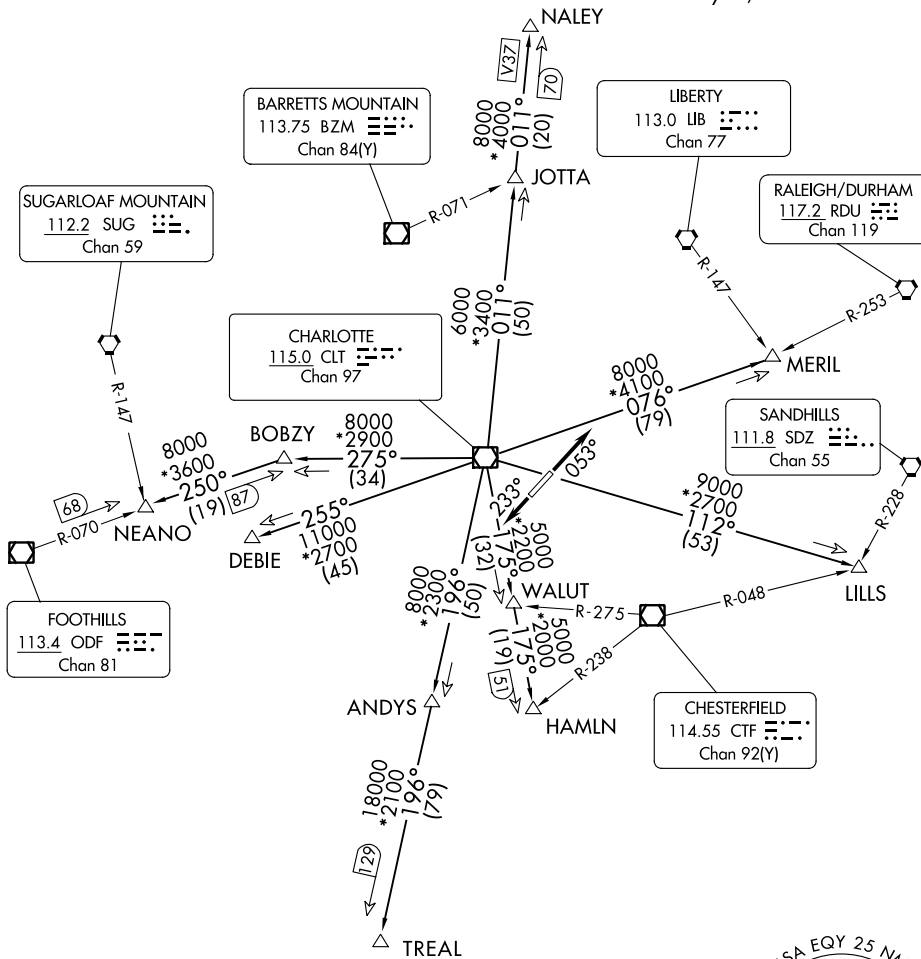
LIBERTY
113.0 LIB
Chan 77

RALEIGH/DURHAM
117.2 RDU
Chan 119

SANDHILLS
111.8 SDZ
Chan 55

CHESTERFIELD
114.55 CTF
Chan 92(Y)

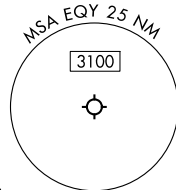
FOOTHILLS
113.4 ODF
Chan 81



NOTE: For turbo jet aircraft only.
NOTE: Upon reaching 10000 MSL, accelerate to and maintain 280K, if unable advise ATC.
NOTE: Transponder code will be issued via Charlotte clearance delivery.

NOTE: Chart not to scale.

(CONTINUED ON FOLLOWING PAGE)



KERMIT FOUR DEPARTURE

(KER4.KER) 21MAR24

MONROE, NORTH CAROLINA
CHARLOTTE/MONROE EXEC (EQY)

SE-2, 26 DEC 2024 to 23 JAN 2025

SE-2, 26 DEC 2024 to 23 JAN 2025



DEPARTURE ROUTE DESCRIPTION

TAKEOFF RUNWAY 5: Climb on heading 053°, thence

TAKEOFF RUNWAY 23: Climb on heading 233°, thence

. . . . on RADAR vectors to intercept filed/assigned transition or enroute fix/navaid.
Maintain 3000, expect filed altitude/flight level 10 minutes after departure.

ANDYS TRANSITION (KER4.ANDYS): From over CLT VOR/DME on CLT R-196 to ANDYS.

DEBIE TRANSITION (KER4.DEBIE): From over CLT VOR/DME on CLT R-255 to DEBIE.

HAMLN TRANSITION (KER4.HAMLN): From over CLT VOR/DME on CLT R-175 to HAMLN.

JOTTA TRANSITION (KER4.JOTTA): From over CLT VOR/DME on CLT R-011 to JOTTA.

LILLS TRANSITION (KER4.LILLS): From over CLT VOR/DME on CLT R-112 to LILLS.

MERIL TRANSITION (KER4.MERIL): From over CLT VOR/DME on CLT R-076 to MERIL.

NALEY TRANSITION (KER4.NALEY): From over CLT VOR/DME on CLT R-011 to NALEY.

NEANO TRANSITION (KER4.NEANO): From over CLT VOR/DME on CLT R-275 to BOBZY,
then on ODF R-070 to NEANO.

TREAL TRANSITION (KER4.TREAL): From over CLT VOR/DME on CLT R-196 to TREAL.

SE-2, 26 DEC 2024 to 23 JAN 2025

SE-2, 26 DEC 2024 to 23 JAN 2025