

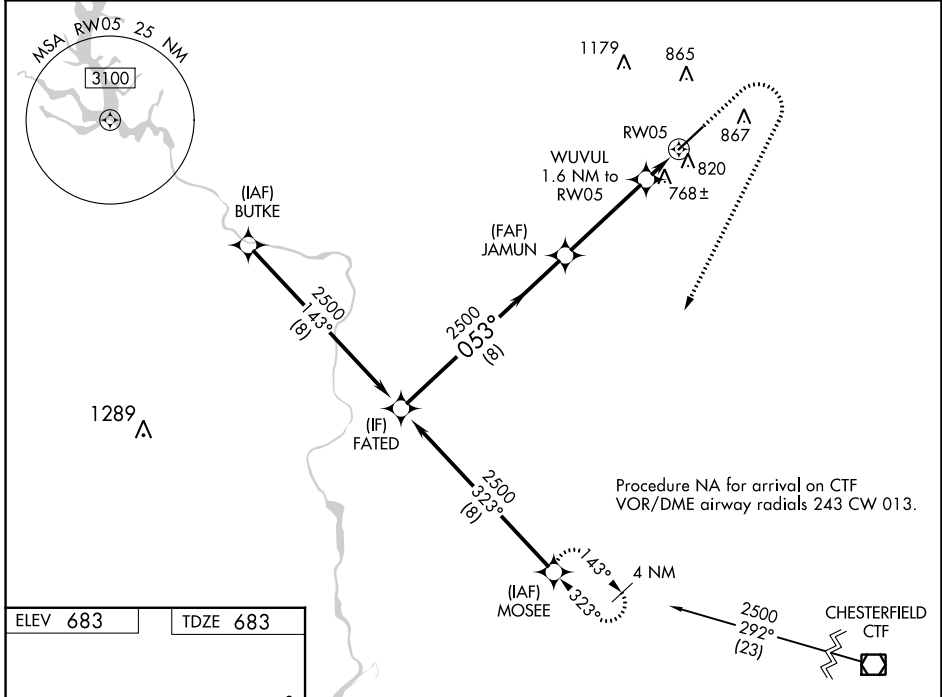
WAAS CH <b>66002</b> <b>W05A</b>	APP CRS <b>053°</b>	Rwy Idg TDZE Apt Elev	<b>7001</b> <b>683</b> <b>683</b>
--	------------------------	-----------------------------	---

# RNAV (GPS) RWY 5

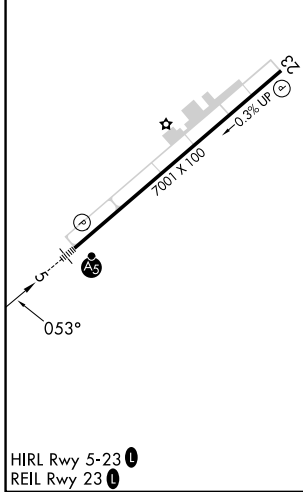
CHARLOTTE/MONROE EXEC (EQY)

RNP APCH-GPS.	MALSR	MISSED APPROACH: Climb to 1140 then climbing right turn to 2500 direct MOSEE and hold.
<p><b>⚠</b> Rwy 5 helicopter visibility reduction below 3/4 SM NA. For uncompensated Baro-VNAV systems, LNAV/VNAV NA below -7°C or above 54°C. Inop table does not apply to LPV all Cats. For inop ALS, increase LNAV/VNAV all Cats visibility to 3/8 SM and LNAV all Cats visibility to 1 SM.</p>		

ASOS <b>135.775</b>	CHARLOTTE APP CON <b>120.05 307.8</b>	CLNC DEL <b>132.55</b>	UNICOM <b>122.7 (CTAF)</b>
------------------------	--	---------------------------	-------------------------------



ELEV 683	TDZE 683
----------	----------



HIRL Rwy 5-23 **Ⓛ**  
REIL Rwy 23 **Ⓛ**

	FATED	JAMUN	WUVUL 1.6 NM to RW05	MOSEE
	2500	2500	1220	1140
	053°		0.9 NM to RW05	
	8 NM	4 NM	0.7 NM	0.9 NM
GP 3.00° TCH 46				
CATEGORY	A	B	C	D
LPV DA	933-3/4 250 (300-3/4)			
LNAV/VNAV DA	1001-3/4 318 (400-3/4)			
LNAV MDA	1020-3/4 337 (400-3/4)			
<b>ⓐ</b> CIRCLING	1220-1	537 (600-1)	1220-1 1/2 537 (600-1 1/2)	1480-2 1/2 797 (800-2 1/2)

SE-2, 26 DEC 2024 to 23 JAN 2025

SE-2, 26 DEC 2024 to 23 JAN 2025