

WAAS CH 86204 W34A	APP CRS 341°	Rwy Idg TDZE Apt Elev	7500 4365 4365
--	------------------------	-----------------------------	---

RNAV (GPS) RWY 34

NORTHEAST WYOMING RGNL (GCC)

RNP APCH.

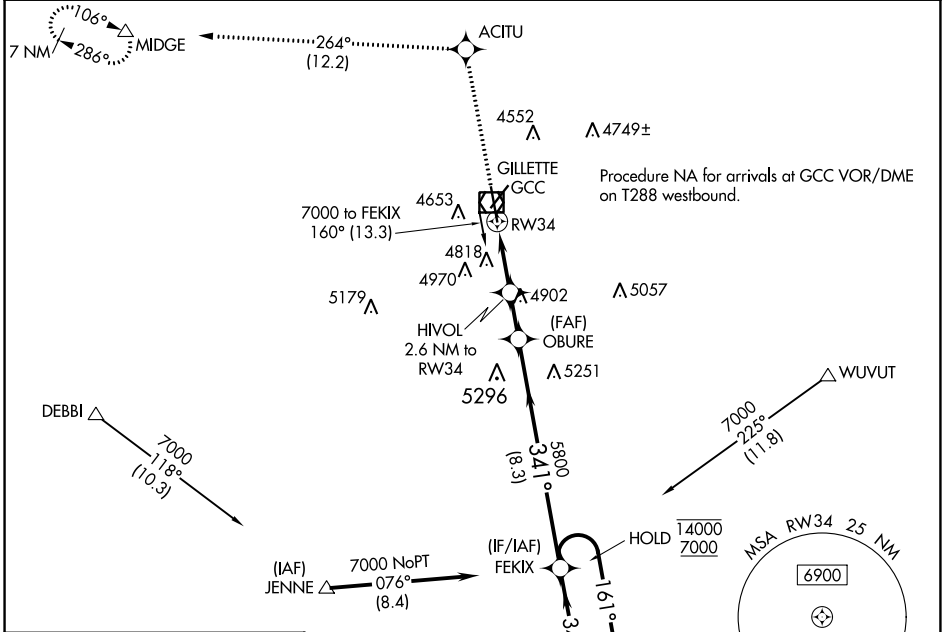
⚠ Circling Rwy 3 NA at night. Inop table does not apply to LPV and LNAV/VNAV. For uncompensated Baro-VNAV systems, LNAV/VNAV NA below -23°C or above 54°C. For inop ALS, increase LNAV Cat A visibility to 1 SM, and Cat C/D to 2 SM. Rwy 34 helicopter visibility reduction below 3/4 SM NA.

MALSR



MISSED APPROACH:
Climb to 7000 direct ACITU and on track 264° to MIDGE and hold.

ASOS 124.175	DENVER CENTER 135.6 363.025	UNICOM 122.95	CTAF 118.5
------------------------	---------------------------------------	-------------------------	----------------------

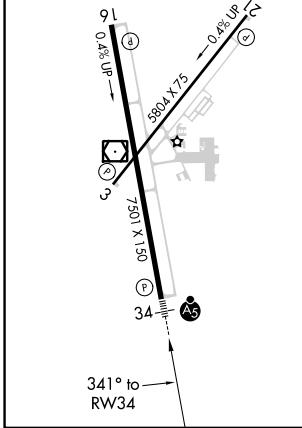


NW-1, 26 DEC 2024 to 23 JAN 2025

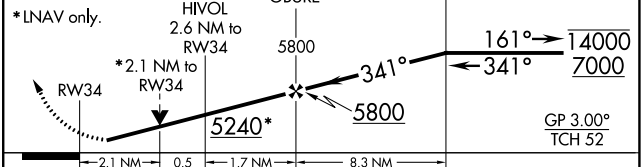
NW-1, 26 DEC 2024 to 23 JAN 2025

ELEV 4365	D	TDZE 4365
------------------	----------	------------------

HIRL Rwy 16-34
REIL Rwy 3, 16, and 21
MIRL Rwy 3-21



7000	ACITU	tr 264°	MIDGE	VGSI and RNAV glidepath not coincident. (VGSI Angle 3.20/TCH 56)	7 NM
					Holding Pattern



CATEGORY	A	B	C	D
LPV DA		4620-3/4	255 (300-3/4)	
LNAV/VNAV DA		5480-4	1115 (1200-4)	
LNAV MDA	5120-3/4	755 (800-3/4)	5120-13/4	755 (800-13/4)
C CIRCLING	5120-1 755 (800-1)	5240-11/4 875 (900-11/4)	5400-3	1035 (1100-3)