

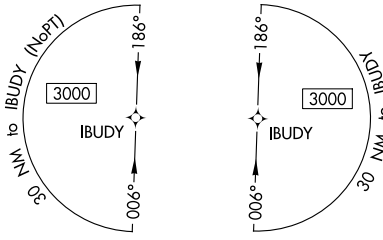
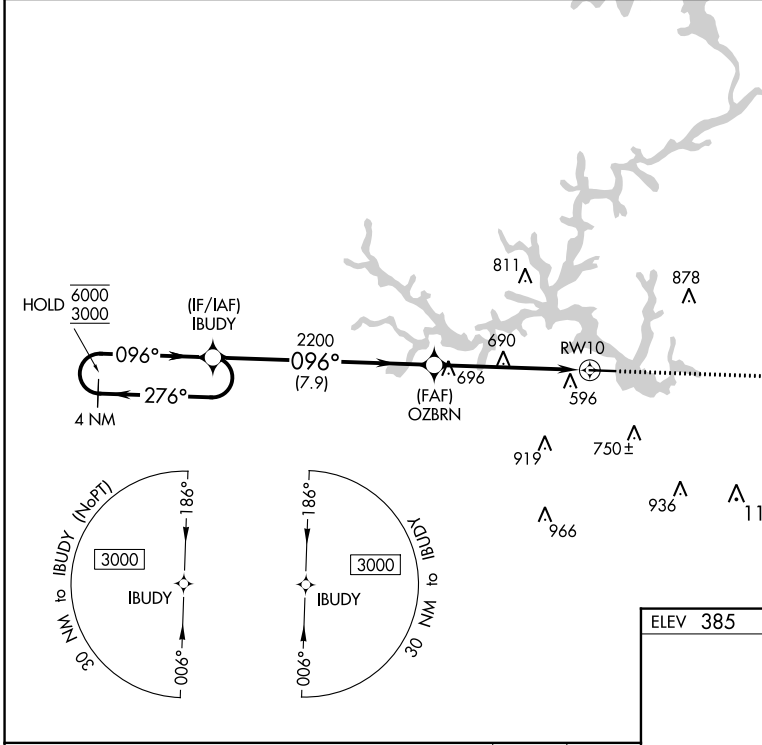
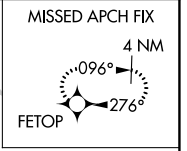
APP CRS	Rwy Idg	5506
096°	TDZE	385
	Apt Elev	385

RNAV (GPS) RWY 10

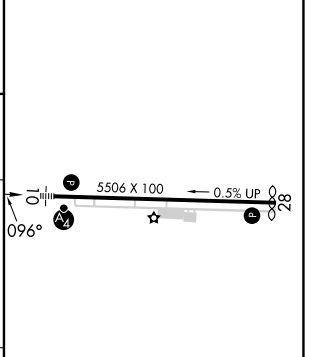
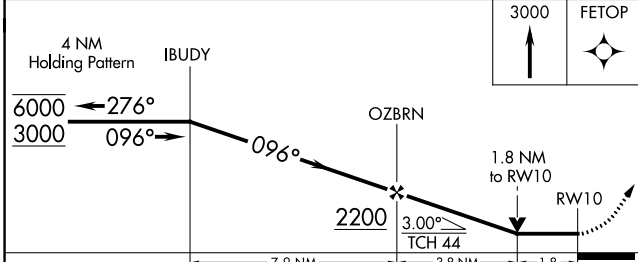
BALDWIN COUNTY RGNL (MLJ)

RNP APCH - GPS.	MALSF	MISSED APPROACH: Climb to 3000 direct FETOP and hold.
<p>Rwy 10 helicopter visibility reduction below 3/4 SM NA.</p>		

AWOS-3 120.925	ATLANTA APP CON ★ 124.2 279.6	UNICOM 122.975 (CTAF) 0
--------------------------	---	-----------------------------------



ELEV 385	TDZE 385
----------	----------



CATEGORY	A	B	C	D
LNVA MDA	1000-1	615 (700-1)	1000-1½	615 (700-1½)
CIRCLING	1000-1	615 (700-1)	1080-2 695 (700-2)	1280-3 895 (900-3)

MIRL Rwy 10-28
REIL Rwy 10 and 28

SE-4, 26 DEC 2024 to 23 JAN 2025

SE-4, 26 DEC 2024 to 23 JAN 2025