

TULLAHOMA, TENNESSEE

RNAV (GPS) RWY 3

APCH CRS	Rwy Idg	6001
027°	TDZE	1065
	Arprt Elev	1065

- (USAF)

ARNOLD AFB (KAYX)

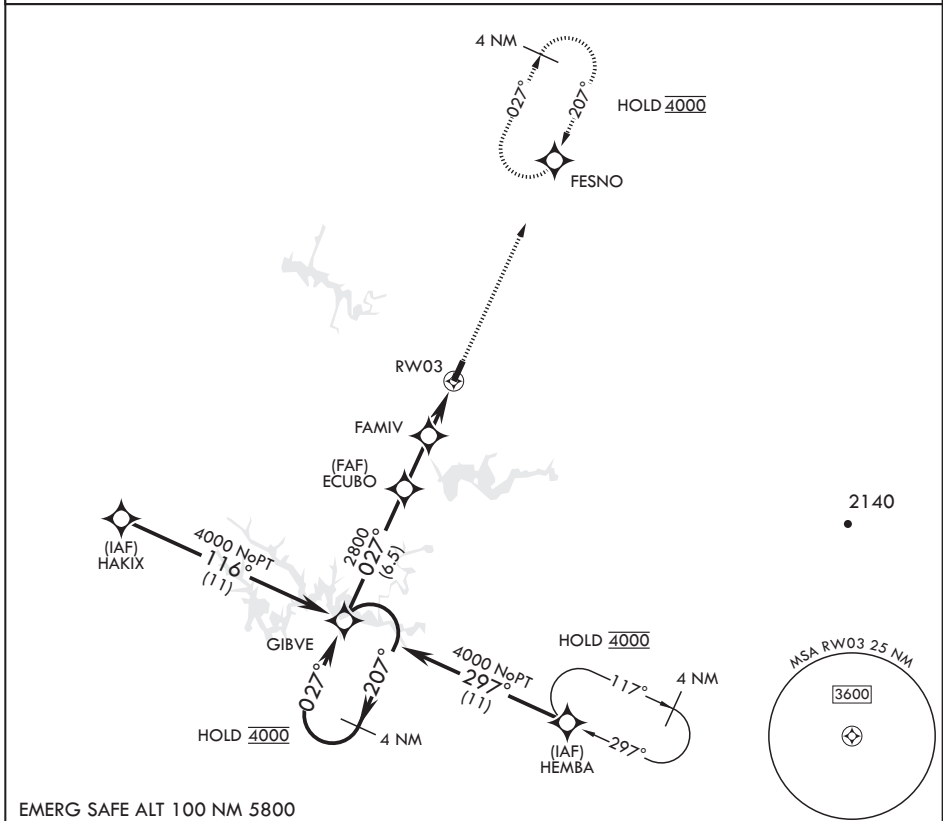
RNP APCH

MISSED APPROACH: Climb to 4000 direct FESNO and hold, continue climb-in-hold to 4000.

* Circling not authorized NW of RWY 3-21.

UNICOM

126.2 (CTAF) 257.975 (CTAF)



EMERG SAFE ALT 100 NM 5800

4 NM Holding Pattern GIBVE 4000 207° 027° 4000 † FAMIV to RW03 3.12° ≥ † TCH 40	ECUBO 2800 027°		FAMIV 2000 027°		RW03 2000 1 NM to RW03	4000 FESNO ELEV 1065 TDZE 1065
	2.6 NM		2.7 NM		4001 * 150 027°	4000 FESNO ELEV 1065 TDZE 1065
CATEGORY	A	B	C	D		
RNAV MDA	1420-1	355	(400-1)			
CIRCLING*	1520-1 455 (500-1)	1620-1 555 (600-1)	1640-1½ 575 (600-1½)	1800-2¼ 735 (800-2¼)		

HIRL all Rwys
REIL all Rwys

TULLAHOMA, TENNESSEE

35°24'N - 86°05'W

ARNOLD AFB (KAYX)

Orig 19MAY22

RNAV (GPS) RWY 3

SE-1, 26 DEC 2024 to 23 JAN 2025

SE-1, 26 DEC 2024 to 23 JAN 2025